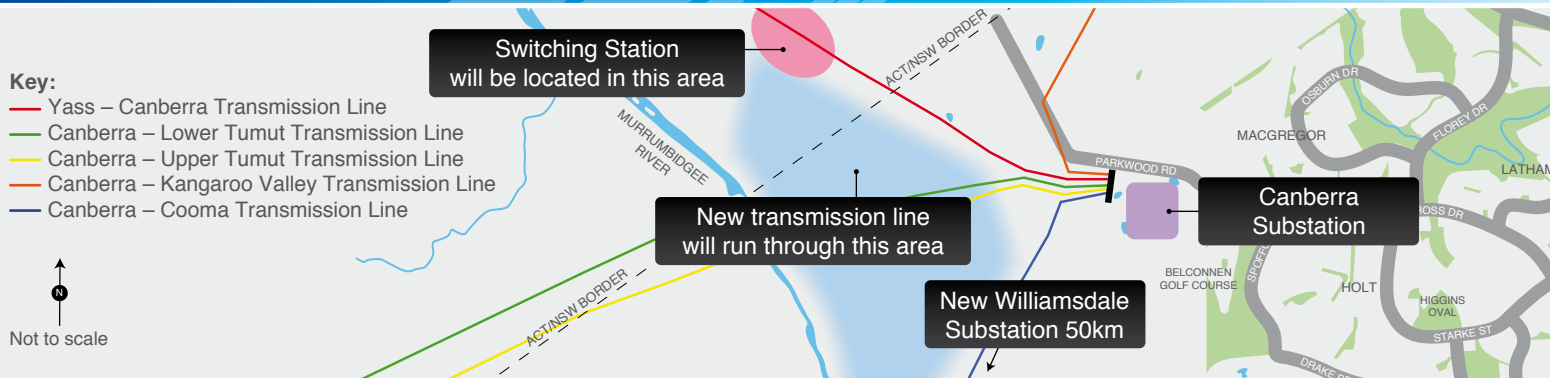


# ACT – Second Supply Project

## COMMUNITY UPDATE



This community update is one way TransGrid will inform the community about the ACT – Second Supply Project. You can also find information by visiting TransGrid’s website, phoning the information hotline and via updates in the local media.

### ACT – Second Supply Project

The ACT – Second Supply Project is an \$80 million investment to secure a second power supply to the ACT. This project is just one part of a five year, \$2.4 billion plan by TransGrid to build new or upgrade existing substations and transmission lines across New South Wales (NSW) and Australian Capital Territory (ACT).

#### Who is TransGrid?

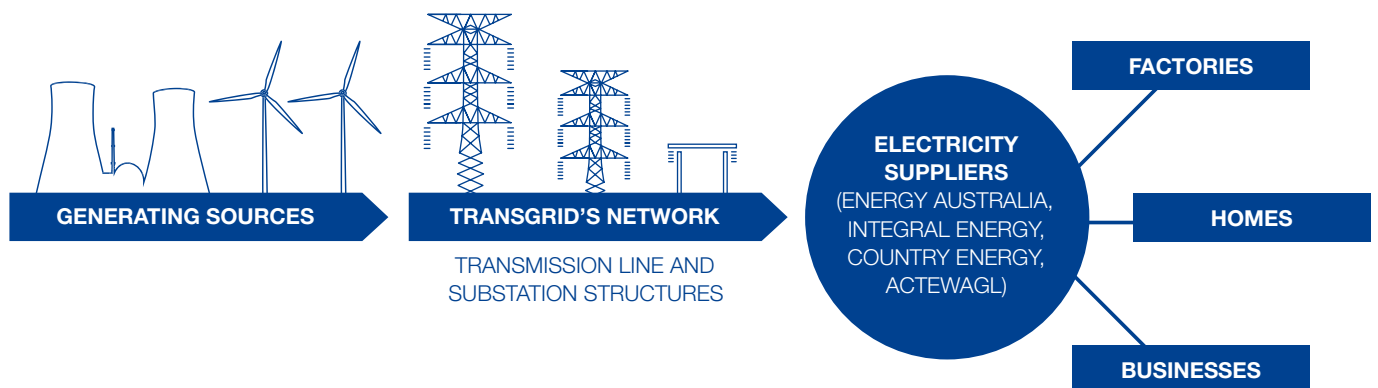
TransGrid is the owner, operator and manager of the NSW high voltage transmission network. It is TransGrid’s job to ensure the safe and reliable delivery of high voltage electricity around NSW and also the ACT.

TransGrid’s 12,500 kilometres of transmission line connect the generators, like power stations and wind farms, to customers and distributors like ActewAGL. The transmission network carries energy around NSW and the ACT and also connects to Queensland and Victoria to allow interstate energy trading.

#### Why is it needed?

The ACT currently has one bulk power supply point, the Canberra Substation. From this substation, ActewAGL distributes electricity to homes and businesses around the ACT and surrounding areas.

The nation’s capital currently has a population of about 350,000, all reliant on the Canberra Substation. To ensure the security and reliability of your electricity supply, now and in the future, a second independent bulk supply point needs to be built.



## What's involved?

Under the direction of the ACT government, TransGrid in collaboration with ActewAGL, will provide the ACT with a second bulk supply point. To do this, TransGrid will:

- Build a new 330/132kV substation at Williamsdale
- Upgrade a 50 kilometre section of the existing Canberra – Cooma transmission line between the Canberra Substation and the new Williamsdale Substation
- Upgrade the Canberra Substation to meet future electricity needs
- Build a new 330kV switching station at Wallaroo, adjacent to the existing Yass – Canberra transmission line
- Build a new four kilometre section of transmission line to link the new Wallaroo Switching Station to the existing Canberra – Williamsdale transmission line.

### New Williamsdale Substation

A new substation is being built at Williamsdale and will link to the new Wallaroo Switching Station and the Canberra Substation independently. The substation will convert 330kV high voltage electricity to a 132kV voltage. ActewAGL will then distribute the lower voltage electricity to homes and businesses.

### Canberra – Cooma transmission line upgrade

TransGrid will upgrade a 50 kilometre section of the Canberra – Cooma transmission line, between the Canberra Substation and the new Williamsdale Substation. TransGrid will increase the operating voltage of this section from 132kV to 330kV to meet future electricity demand. This existing line was originally built to operate at 330kV but has been operating at 132kV for many years.

### Canberra Substation upgrade

The Canberra Substation was built in 1967 and parts of the substation are approaching the end of their serviceable life. To upgrade the substation and ensure a reliable power supply, TransGrid will replace the existing transformer and capacitor banks, install new feeder protection and control equipment and build a new 330kV switch bay to enable a 330kV connection between Canberra Substation and the new Williamsdale Substation.

### New Wallaroo Switching Station

A new 330kV switching station will be built at Wallaroo, north-west of the ACT. The switching station will be built adjacent to the existing Yass – Canberra transmission line and will provide a 'switching point' to divert electricity to the new Williamsdale Substation, via a new transmission line.

### New transmission line

A new transmission line will be built to link the new Wallaroo Switching Station to the existing Canberra – Williamsdale transmission line. This transmission line will be about four kilometres long (subject to final design) and operate at 330kV.

## What happens next?

Early 2010	Construction will start on the Williamsdale Substation.
Mid 2010	Maintenance crews will begin work on the access tracks along the Canberra – Cooma transmission line.
Early 2011	Work crews will begin the upgrade of the Canberra – Cooma transmission line.
Mid 2011	Subject to approval, construction will start on the Wallaroo Switching Station.
Mid 2011	Subject to approval, construction will start on the new transmission line.

Over the next few months, TransGrid will liaise with landowners and undertake technical investigations and environmental studies at the Wallaroo Switching Station site and along the future transmission line corridor. These investigations will help us determine and manage any potential environmental impacts this project may have.

*Estimated start dates and their duration are subject to change due to weather, bushfire, technical issues or any work innovations that may arise during the construction.*

## Keeping you informed

TransGrid is committed to keeping residents and businesses informed about the project. Regular updates will be available on the project website at [www.transgrid.com.au/ACTsecondsupply](http://www.transgrid.com.au/ACTsecondsupply)

## Related fact sheets

- ACT – Second Supply – Wallaroo Switching Station
- ACT – Second Supply – Williamsdale Substation
- ACT – Second Supply – Transmission lines

## Contact us

Colin Mayer  
Senior Project Manager  
ACT – Second Supply Project

PO Box A1000  
Sydney South NSW 1235

**Phone** 1800 222 537  
**Email** [ACTsupply@transgrid.com.au](mailto:ACTsupply@transgrid.com.au)  
**Web** [www.transgrid.com.au/ACTsecondsupply](http://www.transgrid.com.au/ACTsecondsupply)

