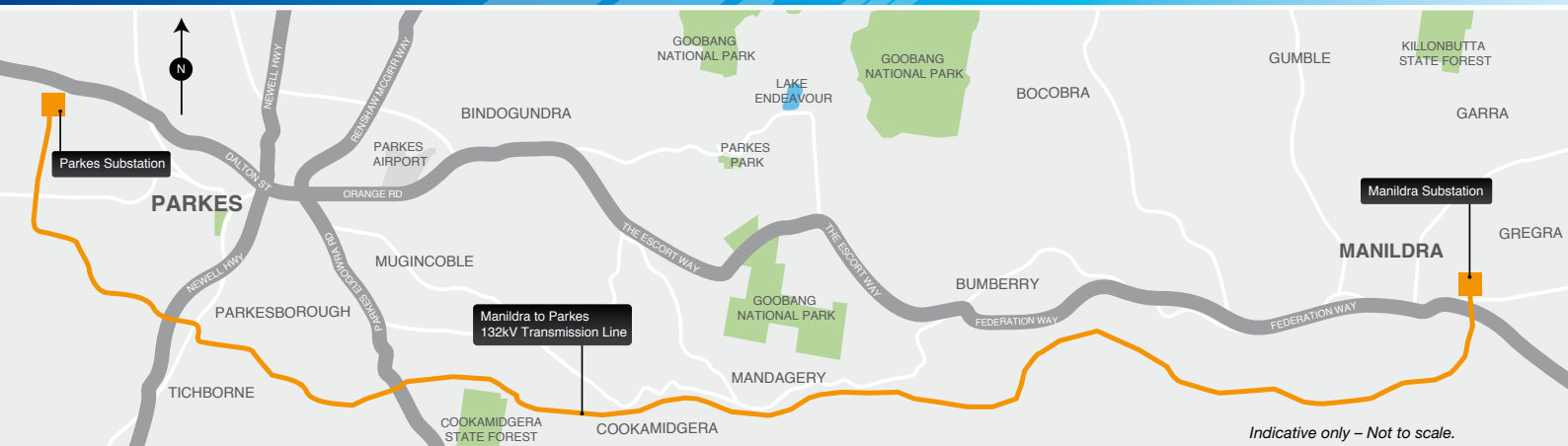


Manildra Parkes

COMMUNITY UPDATE

September 2010



TransGrid is the State Government owned corporation responsible for providing a safe, efficient and reliable electricity supply from the power stations to cities and major areas of NSW to distributors like Country Energy. TransGrid owns, operates and maintains the high voltage electricity network across NSW comprising of transmission lines, underground cables and substations.

What is the Manildra – Parkes Transmission Line project?

TransGrid is investing over \$30 million into the new 132,000 volt transmission line to ensure high levels of electricity reliability in the region into the future. The project is part of TransGrid's \$2.6 billion program to build new or upgrade existing substations and transmission lines across NSW.

TransGrid's energy forecasts have identified the need for this project, in order to meet the increasing electricity demands of the Central West Slopes and Plains region of NSW, particularly during periods of high energy use in the winter and summer months.

TransGrid is constructing 81km of transmission line that will provide a link between the Manildra substation on Old Orange Road, north of Manildra and the Parkes substation on Condobolin Road, west of Parkes. The upgrade is necessary to ensure the reliability of electricity supply in the Manildra, Parkes, Cowra and Forbes areas.

What is the current status of the project?

Extensive liaison with property owners has resulted in a line route being determined that minimises the impact on the broader community and the environment. The Review of Environmental Factors (REF) and Species Impact Statement (SIS) have been completed. These documents evaluate the environmental impacts of a project and provide TransGrid the necessary information to put in place a managed program that minimises the identified impacts to the ecology, visual impact, geology, hydrology, Indigenous and non-Indigenous heritage.

Did you know?

- 360 concrete poles will be progressively erected along the 81km route from the Manildra Substation to the Parkes Substation.
- The stringing of the electrical wires (conductors) occurs in the last phase of construction when all poles are in place.
- An earthing wire is placed above the conductor wires which protects the transmission line from being struck by lightning, ensuring its safe and reliable operation.
- A concrete pole will be erected about every 250m along the Manildra Parkes transmission line route.
- TransGrid currently connects to a large amount of renewable energy sources in NSW, including more than 4,000 megawatts of hydro and wind generation. TransGrid is always looking to increase its connections to renewable generators.
- Electricity charges in NSW represent approximately 8 per cent of an average consumer's household energy bill.

What is the next step for the project?

TransGrid officers are finalising access routes to the transmission line on those properties located along the easement. TransGrid is also securing some outstanding easements along the transmission line route.

TransGrid negotiates with affected landholders with a view to reaching agreement on easement compensation, in accordance with relevant legislation. Further information on this process is included in the TransGrid brochure, *TransGrid Easement Compensation*.

If a compensation agreement with the landholder cannot be reached after a reasonable period of time, TransGrid may consider beginning the process of compulsorily acquiring the easement. This process has commenced with some landholdings along the easement.

For more information

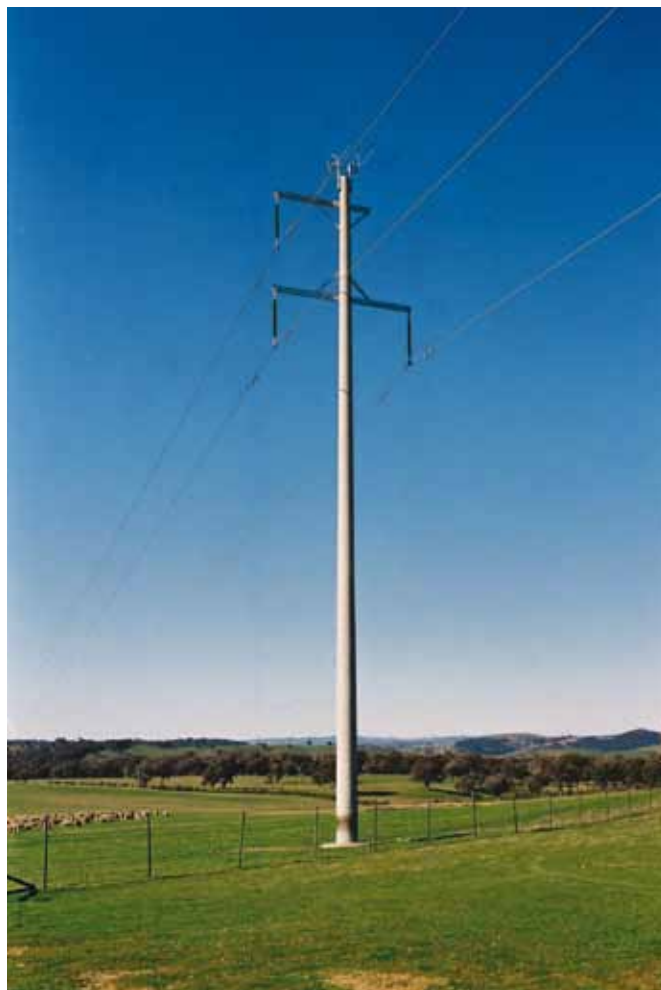
TransGrid's Community Liaison Officer can assist you with any questions that you may have about the Project. TransGrid has a free call number 1800 222 537 and this operates between 8:30am and 5:00pm Monday to Friday.

Keeping you informed

TransGrid is committed to keeping residents and businesses informed about the progress of a Project. Our website www.transgrid.com.au is regularly updated and you can find out the latest information by clicking 'Projects' and then 'Manildra to Parkes'. A full copy of the REF and SIS on the Manildra to Parkes Transmission Line Project is available on TransGrid's website or these documents can also be sent you on a CD by request.

Related fact sheets

→ Manildra to Parkes Transmission Line – Fact Sheet – July 2009.



An example of the concrete pole that will be used for the new 132,000 volt transmission between Manildra and Parkes.

Contact us

PO Box A1000
Sydney South

Phone 1800 222 537

Email manildra.parkes@transgrid.com.au

Web www.transgrid.com.au



TransGrid

September 2010