



The existing Beaconsfield West substation will be redeveloped over four years with construction expected to be completed by the end of 2012.

Dear Resident,

Welcome to the latest Community Update on TransGrid's Beaconsfield West Redevelopment Project.

Built in 1979, the existing Beaconsfield West substation is an integral component of TransGrid's electricity network and was the first major electricity supply point to the Sydney inner metropolitan area. The site is located just 3km south of Sydney's CBD on Burrows Road, Alexandria.

The redevelopment of the Beaconsfield West site is occurring in two phases over the next four years, on properties to the north and south of the existing substation.

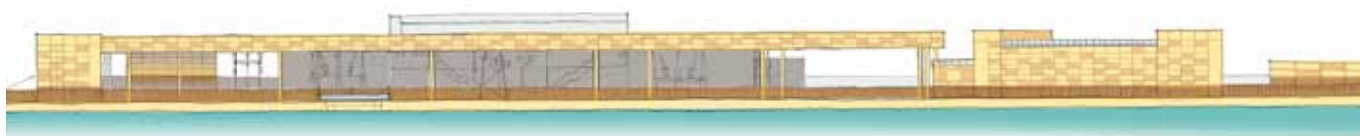
The project is an important investment for the future of the city's electricity network.

Phase 1 – Southern Site:

- TransGrid's contractor UGL Infrastructure has completed the foundations;
- construction of the switchgear building is underway (scheduled to be completed by end of 2011); and
- delivery of the transformer (due to take place in April 2011).

Did you know?

- TransGrid is investing \$144 million over four years into the Beaconsfield West Redevelopment Project to increase the security and reliability of Sydney CBD's power supply.
- TransGrid is the owner, operator and manager of the NSW high voltage electricity network, comprising of transmission lines, underground cables and substations.
- TransGrid is the NSW Government owned corporation responsible for providing a safe, efficient and reliable electricity supply from power stations to cities and major areas of NSW to distributors.
- TransGrid currently connects to a large amount of renewable energy sources, including more than 4,000 megawatts of hydro and wind generation.
- You can sign up to receive email alerts regarding updates to the project by emailing beaconsfieldwest@transgrid.com.au or you can check out our regularly updated website at www.transgrid.com.au for the latest information.



An artist's impression of the Beaconsfield West site upon completion, viewing from the Alexandra Canal.



Construction is well underway on the Southern Site of the Beaconsfield West Substation Redevelopment.

Phase 2 – Northern Site:

- construction of a second switchgear building on the site (expected to be built this year);
- foundations are currently under construction; and
- an overhead structure or gantry will be built across the existing substation to connect the Northern and Southern Sites.

Energy Australia has recently completed construction of a tunnel into the site, which will be utilised to connect high voltage power cables into the substation. Construction of the entire Beaconsfield West Redevelopment project is expected to be completed by late 2012.

TransGrid's Community Liaison Officer can assist you with any questions that you may have about the project. TransGrid has a toll free number 1800 222 537 and this operates between 8.30am and 5.00pm Monday to Friday.

Yours Sincerely,

The Project Team

Background to Project

Sydney's population is forecast to swell by 1.1 million people over the next 25 years. It is estimated the city will require more than 640,000 new homes and more than 6.8 million square metres of commercial space to accommodate the growing population.

TransGrid constantly monitors energy use and the future needs of Sydney and the rest of NSW. Joint plans between TransGrid and Energy Australia require the redevelopment of Beaconsfield West substation in order to meet the increasing electricity demands of Sydney city. The project is vital in securing the city's future power supply.

Review of environmental factors

In February 2010, TransGrid prepared a Review of Environmental Factors (REF) to assess and manage any environmental impacts associated with the Beaconsfield West Substation Redevelopment Project. During the detailed design stage, some minor modifications were recommended to enhance the substation functionality and minimise environmental impact. TransGrid has since prepared a Supplementary REF to support these improvements in design. The key modifications include:

- realignment of the proposed Northern GIS Building and Capacitors to improve access for maintenance;
- relocating the gantry (overhead structure) to minimise disturbance to the Alexandra Canal wall; and
- removal of 10 trees along the eastern side of Burrows Road to allow access to the site.

The Supplementary REF is available online at: www.transgrid.com.au/beaconsfieldwest

Related fact sheets

- Beaconsfield West – Fact Sheet – August 2010.

Contact us

PO Box A1000
Sydney South NSW 1235

Phone 1800 222 537

Email beaconsfieldwest@transgrid.com.au

Web www.transgrid.com.au/beaconsfieldwest



January 2011