

SMEC contact details:

Level 6, 76 Berry St
PO BOX 1052
North Sydney, NSW 2060
Ph: (02) 9925 5555
www.smec.com



TransGrid contact details:

Head Office - Sydney

201 Elizabeth Street
Sydney NSW 2000

Postal:
PO Box A1000
Sydney South NSW 1235

Ph: (02) 9284 3000
www.transgrid.com.au

Central NSW - Orange

64-84 William Street
Orange NSW 2800

Postal:
PO Box 906
Orange NSW 2800

Ph: (02) 6360 8711

Northern NSW - Newcastle

Wirra Crescent
Waratah West NSW 2298

Postal:
PO Box 93
Waratah NSW 2298

Ph: (02) 4967 8678

Western Sydney - Eastern Creek

200 Old Wallgrove Road
Eastern Creek NSW 2766

Postal:
PO Box 87
Horsley Park NSW 2175

Ph: (02) 9620 0777

Southern NSW - Yass

Perry Street
Yass NSW 2582

Postal:
PO Box 139
Yass NSW 2582

Ph: (02) 6226 9666



TransGrid's Binalong Communications Site
April 2009





For your information

This information package aims to provide useful information to interested landowners and community members about TransGrid's proposed communications project in Binalong.

Who is TransGrid?

TransGrid is the owner, operator and manager of the largest high voltage transmission network in Australia, connecting generators, distributors and major end users in New South Wales.

TransGrid is committed to providing a safe, reliable, efficient and environmentally responsible high voltage electricity network service to our customers and the community.

The transmission network is connected to Queensland and Victoria providing a robust electricity system that enables interstate energy trading.

Background

TransGrid's substations and transmission lines are operated remotely through a telecommunications network, which transfers system data to network controllers. It is this communications network which manages the protection systems, control mechanisms and network data transfer necessary for the safe and reliable operation of the electricity network.

The proposed communications pole at Binalong is being built to comply with TransGrid's obligations under the National Electricity Rules and National Electricity Market Management Company's Power System Data Communication Standard.

Proposed Works

An upgrade to TransGrid's communications network is planned for Binalong. The proposed works will include the installation of a steel lattice tower (80 metre), new access tracks, security fencing and minor earthworks.

Community & Environmental Investigation

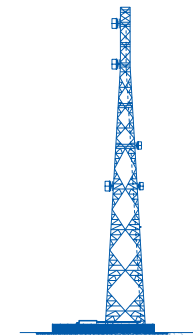
TransGrid has engaged the environmental consultants Snowy Mountains Engineering Corporation (SMEC) to undertake a Review of Environmental Factors (REF), as well as consultation with local stakeholders about the project.

The Environmental Assessment will be prepared in accordance with *Part 5 of the Environmental Planning and Assessment Act 1979* and the *State Environmental Planning Policy (Infrastructure) 2007*.

Construction and Installation

For the delivery of the project, TransGrid has engaged specialist construction contractors to undertake the proposed building works at Binalong.

The works are expected to be completed over a period of 12 weeks. Any affected residents will be advised prior to the commencement of the construction work.



Design concept of communications site

Building Program

The site works will include:

1. Temporary fencing and signage
2. Access track and earthworks
3. Foundations and services trenches
4. Install tower, shelter and communications equipment
5. Fencing and landscaping.

Please find enclosed a CD with a visual presentation of the proposed communications site at Binalong.

Further Information:

For further information on the Binalong communications upgrade, please contact SMEC, TransGrid's community consultants for this project (see over page).