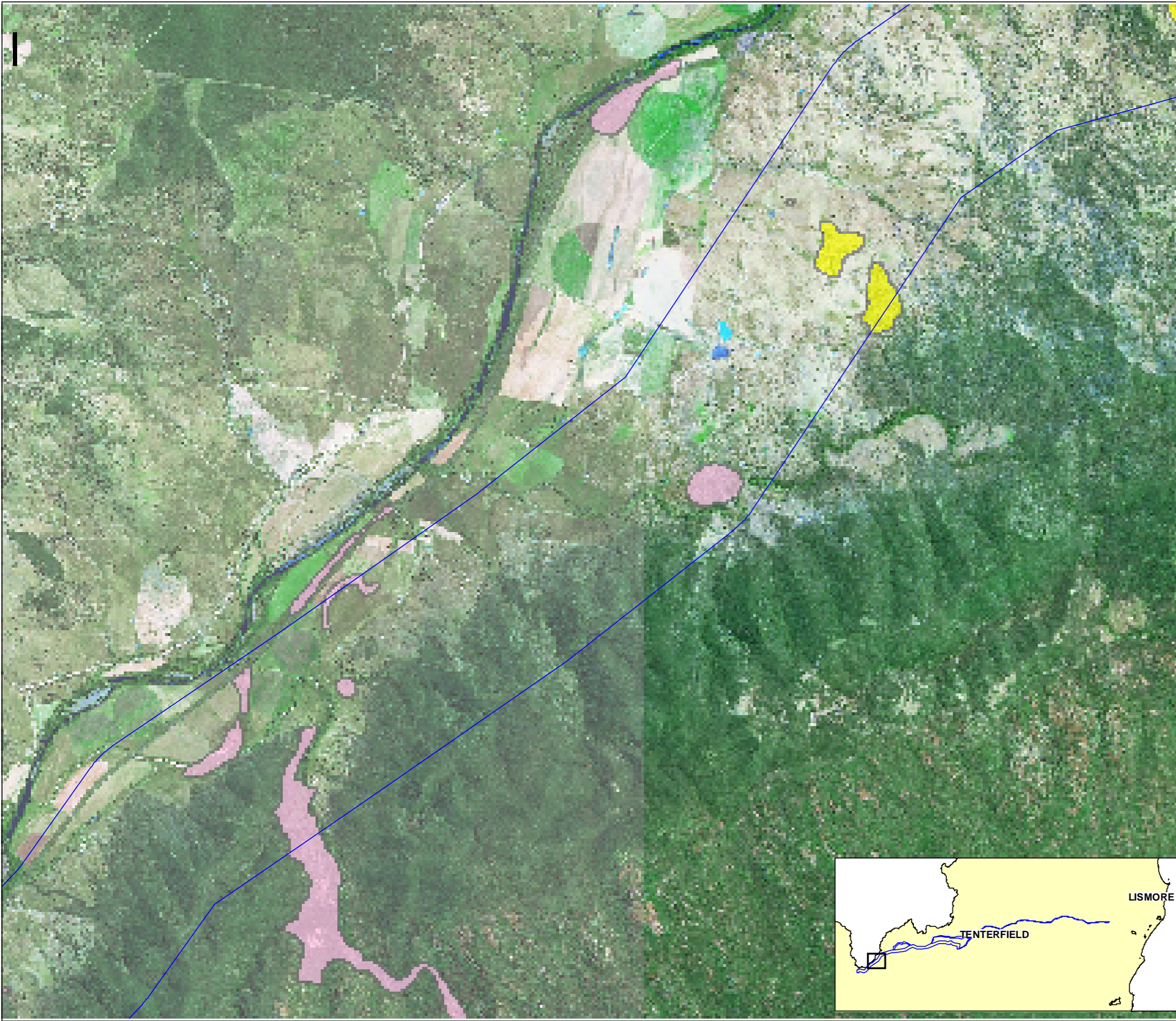


This drawing is subject to COPYRIGHT. It remains the property of URS Australia Pty Ltd.



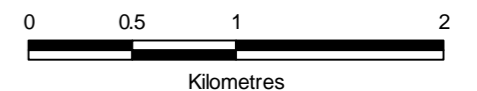
**Legend**

- Dumaresq to Lismore Study Area
- Transmission Lines
- ! Substation
- # Brown Treecreeper
- # Diamond Firetail
- # Turquoise Parrot
- Box Gum Woodland<sup>^\*</sup>
- Box Gum Woodland<sup>\*</sup>
- Inland Grey Box Woodland<sup>\*</sup>
- Inland Grey Box Woodland/  
New England Peppermint Woodland<sup>\*</sup>
- Montane Peatlands and Swamps<sup>\*</sup>
- New England Peppermint Woodland<sup>\*</sup>

<sup>\*</sup> Denotes Vegetation Communities Listed Under the TSC Act  
<sup>^</sup> Denotes Vegetation Communities Listed Under the EPBC Act

**Note: Component C7 not shown.  
(refer to Section 3)**

Vegetation mapping is based on a preliminary field assessment conducted along public access roads. Vegetation communities more than 50m from public access roads can not be confirmed with certainty. All mapping should be verified by conducting detailed vegetation surveys. Vegetation community boundaries and species composition are subject to change following subsequent surveys.



Source: TransGrid

Drawn: AJW	Approved: LB	Date: 10/09/2009
------------	--------------	------------------

Job No.: 43177662	File No.: 43177662.010.mxd
-------------------	----------------------------

Client

TransGrid

Project

DUMARESQ TO LISMORE  
330 kV TRANSMISSION LINE

Title

PRELIMINARY ENDANGERED  
ECOLOGICAL COMMUNITY MAPPING

Figure: 5.2b

