

Kempsey to Port Macquarie 132kV Transmission Line

This Fact Sheet is to inform the community of the background and details of TransGrid's project to rebuild the existing Kempsey to Port Macquarie 132kV transmission line.

Who is TransGrid?

TransGrid is a State Owned Corporation responsible for operating and maintaining the NSW high voltage transmission system. Transmission lines and substations supply electricity from power stations to electricity distributors (such as Country Energy, Energy Australia and Integral Energy), who then provide power to homes, businesses and factories across NSW.

Why is the upgrade needed?

The Mid North Coast region - which includes the areas of Coffs Harbour, Nambucca Heads, Kempsey, Port Macquarie, Taree and Great Lakes - is one of the fastest growing regions in NSW. To meet the growing energy needs of the area, TransGrid needs to upgrade the region's electricity supply system.

Forecasts indicate that population in the region is likely to continue to grow in the medium to long term. The Draft Far North Coast Regional Strategy (Dec 2006) predicts that by 2031, the Hastings - Macleay Valley subregion, incorporating the local government areas of Kempsey and Port Macquarie - Hastings, is expected to accommodate an extra 17,800 dwellings.

Port Macquarie is the sub-region's major regional centre and has been identified in the strategy as one of the region's four major centres where "new commercial and retail development, employment, professional services and transport logistics will be concentrated".

Current supply

The Port Macquarie area is currently supplied via two 132kV wood pole transmission lines, one from Kempsey and one from Taree, which are connected to the NSW transmission system. TransGrid's substations at Kempsey and Port Macquarie feed directly into Country Energy's electricity distribution system which supplies the local areas.

Proposed new construction

To increase the capacity of the electricity supply to Port

Macquarie, TransGrid proposes to rebuild the existing single circuit line as two circuits. The use of modern materials will enable TransGrid to build a more compact line.

Constructing the new double circuit line within the easement of the existing line is considered the best way to minimise environmental impacts whilst improving the electricity supply system.

Project timetable

Construction commenced in late 2008 and will be completed by late 2010.

Consultation

TransGrid will contact landowners along the existing easement to discuss the project in detail and answer any questions they may have.

Contacting us

Michael de Rome - Project Manager

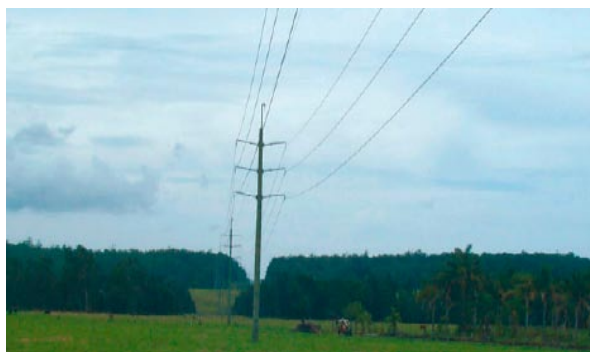
Telephone: (02) 8204 6303

Fax: (02) 8204 6370

Email: michael.de.rome@transgrid.com.au



Existing wood pole structure



Proposed new construction

