



Appendix F

Indigenous Heritage Assessment

PROPOSED SUBSTATION, ROOKWOOD ROAD,
POTTS HILL, BANKSTOWN
SUPPLEMENTARY INDIGENOUS HERITAGE ASSESSMENT

February 2010



Report to

Mitchell McLennan on behalf of TransGrid

TABLE OF CONTENTS

1. INTRODUCTION AND BACKGROUND	1
1.1 Project background.....	1
1.2 The Study Area	2
1.3 Proposed Development	3
1.4 Aboriginal Stakeholder Consultation	3
1.5 Report authorship	3
2. SURVEY RESULTS	3
2.1 Fieldwork Methodology	3
2.2 Survey Results	4
3. DISCUSSION	5
3.1 Management Principles	6
3.2 Managing identified sites/landscapes	7
4. RECOMMENDATIONS	7
5. REFERENCES	9

Figures

Figure 1: Potts Hill Business Park (red outline) with proposed TransGrid development Site IO1 (circled in yellow).	2
Figure 2: Surplus land in the Potts Hill Reservoir (JMcD CHM 2007: Figure 3): location of proposed substation arrowed.....	2
Figure 3: Archaeological sensitivity zones within the Potts Hill Reservoir lands after field inspection (current study area circled in orange).....	4

Appendices

Appendix I	Responses from Aboriginal groups
------------	----------------------------------

I. INTRODUCTION AND BACKGROUND

1.1 Project background

Jo McDonald Cultural Heritage Management (JMcD CHM) was commissioned by Mitchell McLennan Pty Ltd on behalf of TransGrid to provide a supplementary Indigenous heritage assessment of site 101 at Potts Hill reservoir site in Bankstown as part of their Review of Environmental Factors. This builds on a previous report done of the Potts Hill Reservoir Site (JMcD CHM 2007) and should be read in conjunction with that report. It does not repeat the background information compiled for the previous study but merely reiterates the findings in relation to the subject land.

Summary of previous findings and recommendations

The survey of Potts Hill Reservoir site was conducted on April 20th, 2007. Participants included Gordon Workman and Des Dyer (DTAC), Leanne Watson (DCAC), Celestine Everingham (DACHA), Andrea Ward and Amy Stevens (JMcD CHM) and Peter Byrnes (Sydney Water). Gandangara Local Aboriginal Land Council was unable to provide a representative to take part in the survey.

Land use mapping of the study area highlighted zones of high and moderate disturbance. The survey identified no sites or artefacts within the study area.

No Aboriginal cultural material was found within the developable lands at the Potts Hill Reservoir site and this area has very little likelihood of containing areas with potential archaeological deposit (PAD). It was recommended that there are no Indigenous heritage constraints to development here.

1.2 The Study Area

The study area consists of Lot 101 in the Potts Hill Reservoir site on Rookwood Rd, Potts Hill (Figures 1). Our previous study investigated all of the Potts Hill Reservoir surplus land (Figure 2).

Figure 1: Potts Hill Business Park (red outline) with proposed TransGrid development Site 101 (circled in yellow).



Figure 2: Surplus land in the Potts Hill Reservoir (JMcD CHM 2007: Figure 3): location of proposed substation arrowed.



1.3 Proposed Development

Lot 101 is to be developed by TransGrid as an electricity substation.

1.4 Aboriginal Stakeholder Consultation

The study area falls within the boundaries of the Gandangara Local Aboriginal Land Council (GLALC) and is within the area of interest to Darug Custodians Aboriginal Corporation (DCAC), Darug Tribal Aboriginal Corporation (DTAC) and Darug Aboriginal Cultural Heritage Assessments (DACHA).

The Aboriginal groups were all informed of the proposed development and members of DCAC, DTAC and DACHA participated in the 2007 field inspection. GLALC were invited to participate, but were unable to provide a representative. GLALC stated that the field inspection could proceed in their absence, and they were provided with a copy of the 2007 report. Reports received by DTAC and DACHA in 2007 are appended here.

1.5 Report authorship

This report was written by Jo McDonald.

2. SURVEY RESULTS

2.1 Fieldwork Methodology

Andrea Ward and Amy Stevens undertook the field inspection of the Potts Hill Reservoir surplus lands on Friday 20th April 2007, accompanied by Peter Byrnes (Sydney Water), Gordon Workman and Des Dyer (then DTAC), Leanne Watson (DCAC) and Celestine Everingham (DACHA).

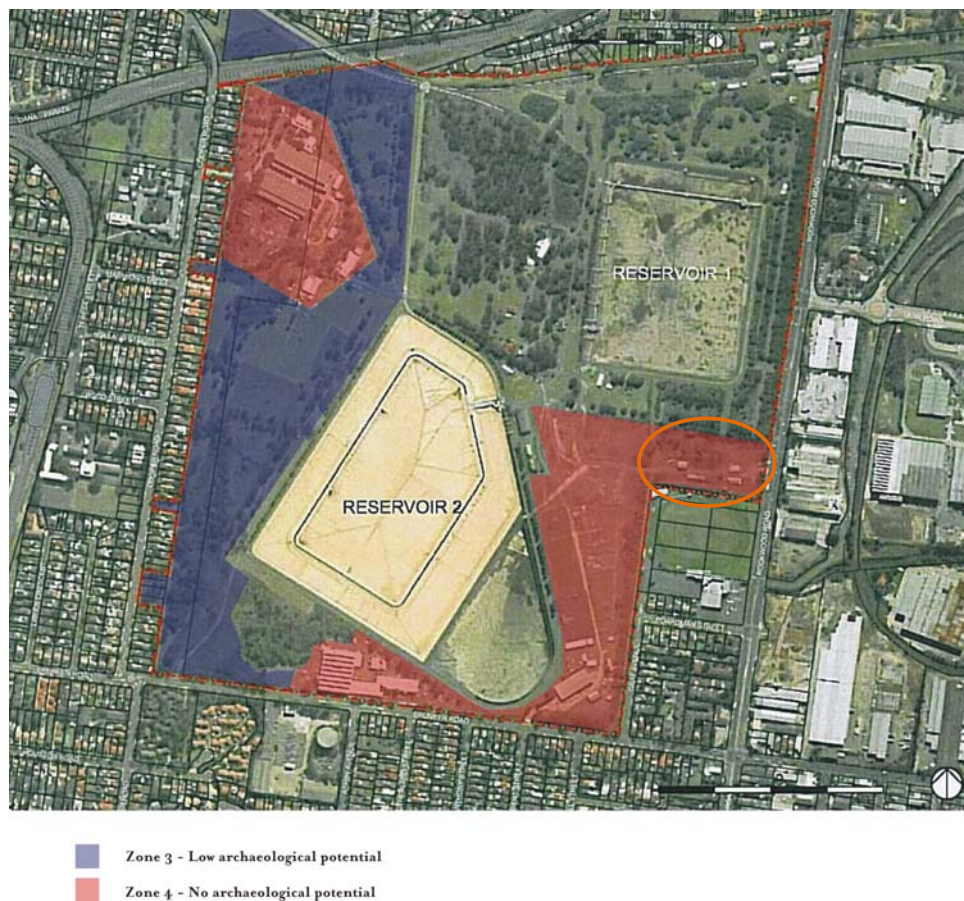
The subject land was covered by vehicle and pedestrian survey. Due to the high level of disturbance and fill across the study area, the survey focussed on tracks and other areas of good surface visibility.

2.2 Survey Results

No surface sites or artefacts were identified within the Potts Hill study area.

Archaeological sensitivity mapping carried out for the initial study found that the most of the land had been either highly or moderately disturbed. The field survey identified higher levels of disturbance than was evident from air photo interpretation, and thus the entire study area was classified as Zone 3 (low archaeological potential) and Zone 4 (no archaeological potential: Figure 3).

Figure 3: Archaeological sensitivity zones within the Potts Hill Reservoir lands after field inspection (current study area circled in orange).



The level of disturbance across the Potts Hill Reservoir surplus (developable) lands and the presence of such a large amount of fill allowed the archaeological potential to be assessed as low to zero.

3. DISCUSSION

In order to appropriately manage Indigenous heritage values, proposed developments need to be assessed for their archaeological significance and/or potential. Assessment includes the identification of lands with the greatest potential to contain intact archaeological deposit (i.e. only minimally disturbed by previous land-use impact) and those which are locally (and regionally) threatened by existing urban development. These two factors affect the assessment of high conservation potential.

The land-use mapping can be reinterpreted as archaeological sensitivity. Four zones are identified generally for this purpose, although only the two lowest categories are found within the Potts Hill Reservoir surplus lands:

- ☉ Zone 1 – High archaeological potential
- ☉ Zone 2 – Moderate archaeological potential
- ☉ Zone 3 – Low archaeological potential
- ☉ Zone 4 – No archaeological potential

These zones are used to assist in the assessment of the sites and landscapes within the study area.

Cultural significance

This usually refers to the importance of a site or feature to the local Aboriginal community. Certain sites, items and landscapes may have traditional significance or contemporary importance to the community. Cultural significance must be assessed by the relevant Aboriginal community – in this case the Gandangara Local Aboriginal Land Council, the Darug Custodial Aboriginal Corporation, the Darug Aboriginal Cultural Heritage Assessments and the Darug Tribal Aboriginal Corporation.

Scientific significance

One of the aims of cultural heritage management is to preserve a representative sample of the archaeological resource for the benefit of future scientific researchers and the general public. Assessment of scientific significance involves placing a site or heritage

item within a broader regional framework. The Potts Hill reservoir surplus lands, being highly disturbed, are assessed as being of low scientific significance.

Public significance

This usually refers to a site's potential to educate the general public about Aboriginal culture, but can have a broader definition. Increasing public awareness and understanding about a site's Indigenous and scientific values may spare other sites spared from inadvertent or intentional destruction. Public significance may also include the different community values placed on a site or heritage place.

3.1 Management Principles

The following general management principles apply for sites and landscapes with Aboriginal heritage values. These principles are predicated on the assessment of archaeological sensitivity based on previous levels of land-use disturbance.

- ☉ Sites and/or landscapes with high archaeological potential or Aboriginal significance (particularly in threatened landscape) should be identified as worthy of conservation, and development impacts on these should be avoided.
- ☉ Sites and/or landscapes with good archaeological potential or Aboriginal significance (particularly in threatened landscape) should be avoided if possible by development proposals. If impacts are unavoidable then these features should be subject of further investigation to ensure that information is retrieved prior to their destruction. Selection of salvage areas should be made on the basis of a 'whole of development' approach and be landscape based;
- ☉ Sites and/or landscapes with moderate archaeological potential or Aboriginal significance should be managed on the basis of their assessed significance. These areas would only require sub-surface investigation if they provided landscape parameters which are poorly understood in the local and regional context;
- ☉ Sites and/or landscapes of low or no archaeological potential or Aboriginal significance do not require planning consideration or further archaeological investigation in relation to the proposed development;

3.2 Managing identified sites/landscapes

Lot 101 has no archaeological sensitivity (Zone 4). Zone 4 poses no constraint to development. Further archaeological works will not be required in this area. No land within the current study area has been identified as worthy of conservation. There are no identified heritage constraints within the current study area.

4. RECOMMENDATIONS

The following recommendations are made on the basis of:

- ☉ the legal requirements of the National Parks and Wildlife Act NSW 1974 (as amended) whereby it is illegal to damage, deface or destroy an Aboriginal object without the prior written consent of the Director-General, DECCW NSW;
- ☉ the interests of the Gandangara Local Aboriginal Land Council, Darug Tribal Aboriginal Corporation, Darug Custodian Aboriginal Corporation and Darug Aboriginal Cultural Heritage Assessments;
- ☉ the findings of the previous desk top assessment and field survey done within the current study area; and,
- ☉ the proposed development of a substation within Lot 101 of the Potts Hill Reservoir surplus land.

It is recommended that:

1. Lot 101 contains no surface archaeological objects and/or sites;
2. Lot 101 is assessed as containing no area(s) of high archaeological potential and hence no area identified as worthy for conservation for its Indigenous heritage values;
3. Lot 101 is assessed as Zone 4 and has no archaeological potential. It should be considered as developable, and without archaeological constraint. There is no requirement for further investigation in this Lot;
4. Gandangara Local Aboriginal Land Council, Darug Custodian Aboriginal Corporation, Darug Tribal Aboriginal Corporation and Darug Aboriginal Cultural Heritage Assessments should be kept informed about this proposed development.

5. One copy of this report should be sent to:

Mr. Mark Johnson
Gandangara LALC
Level 2
103 Moore Street,
Liverpool NSW 2170

Sandra Lee
Darug Tribal Aboriginal Corporation
PO Box 441
Blacktown NSW 2148

Mrs Leanne Watson
Darug Custodian Aboriginal Corporation
PO Box 81
Windsor NSW 2756

Mr Gordon Morton
Darug Aboriginal Cultural Heritage Assessments
90 Hermitage Road
Kurragong Hills NSW 2758

6. Two hard copies (and one electronic copy) of this report should be sent to:

Ms Lou Ewins
Manager Cultural Heritage Division
Sydney Zone DECCW
PO Box 668
Parramatta NSW 2124

5. REFERENCES

JMcD CHM 2007 Potts Hill, Bankstown Indigenous Heritage Assessment Report to Cité Urban Strategies on behalf of Landcom.

Sydney Water 2005 Potts Hill Reservoirs and Site: Conservation Management Plan.

Appendix I

Responses from Aboriginal groups

(received in 2007)

DARUG TRIBAL ABORIGINAL CORPORATION

(Incorporating Darug Link Associating Inc.)
P.O BOX 441
BLACKTOWN NSW 2148
02 9672 8322 phone
02 9672 8344 fax only
ABN: 77 184 151 969

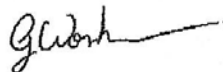
13th November 2007

Frances Scully

Project Archaeologist
Jo McDonald Cultural Heritage Management Pty Ltd
77 Justin Street
Lilyfield NSW 2040

The recommendations in this report are restricted to the Potts Hill Reservoir site surplus lands. Areas of remnant vegetation that are outside the study area, within the SWC retained lands are identified as having higher potential to contain intact archaeological deposits. These retained Sydney Water lands have not been surveyed as a part of this report. If these areas of remnant vegetation are proposed for development in the future, they must be subject to a separate Aboriginal archaeological assessment
Darug Tribal Aboriginal Corporation (DTAC) wishes to be informed about the future work stages of this project.

With Thanks



Gordon Workman

Chairperson DTAC

0411240710

Darug Aboriginal Cultural Heritage Assessments

28 Calala Street, Mt Druitt 2770
ABN 51734106483

Gordon Morton
Ph: 9625 0005
Fax: 45 677421

Celestine Everingham
Ph/Fax: 4567 7421
Mob: 0432 528 896

Attention

20. 11. 07

Frank Sully

20 McDonald b. H. 4.

re Potts Hill, Bankstown -
Darug Heritage Assessment

DACHA have reviewed your report
on the above and support your
findings. We wish to be notified if
any changes are to be made in the
future stages of this project, however
DACHA finds there are no identified
Darug heritage constraints in this
study area.

Yours Sincerely,
Gordon Morton