



**TransGrid**

# **Pollution Incident Response Management Plan**

---

Transport of Waste

February 2021

# Contents

<b>1. Background</b>	<b>3</b>
<b>2. Definitions</b>	<b>4</b>
<b>3. Notification Procedure</b>	<b>5</b>
<b>4. Contact Details</b>	<b>7</b>
<b>5. Communicating with the Community</b>	<b>8</b>
Appendix A Public Health Unit – Referral List (NSW Ministry of Health)	9
Appendix B Local Council Contact List (NSW Division of Local Government)	11

# 1. Background

The *Protection of the Environment Operations Act 1997* (POEO Act) requires the holder of an Environment Protection Licence (EPL) to prepare, keep, test and implement a Pollution Incident Response Management Plan (PIRMP).

TransGrid holds EPL 7153 for the transport of trackable waste and consequently is required to prepare, keep, test and implement a PIRMP.

TransGrid's Senior Environment and Sustainability Manager is ultimately responsible for preparing, keeping, testing and implementation of the PIRMP.

## 2. Definitions

Term	Definition
EPL	Environmental Protection Licence
Immediately	Promptly and without delay
Material harm	<p>(a) harm to the environment is material if:</p> <p>(i) it involves actual or potential harm to the health or safety of human beings or to ecosystems that is not trivial, or</p> <p>(ii) it results in actual or potential loss or property damage of an amount, or amounts in aggregate, exceeding \$10,000 (or such other amount as is prescribed by the regulations), and</p> <p>(b) loss includes the reasonable costs and expenses that would be incurred in taking all reasonable and practicable measures to prevent, mitigate or make good harm to the environment.</p> <p>It does not matter that harm to the environment is caused only in the premises where the pollution incident occurs.</p> <p><i>(Protection of the Environment Operations (POEO) Act 1997)</i></p>
Notifiable Incident	An incident that occurs in the course of an activity so that material harm to the environment is caused or threatened.
PCB	Polychlorinated Biphenyl
PCB Free	Up to and including 2 ppm of PCB
PIRMP	Pollution Incident Response Management Plan
Pollution Incident	<p>An incident or set of circumstances during or as a consequence of which there is or is likely to be a leak, spill, or other escape or deposit of a substance, as a result of which pollution has occurred, is occurring or is likely to occur.</p> <p>It includes an incident or set of circumstances in which a substance has been placed or disposed of on premises, but does not include an incident or set of circumstances involving only the emission of any noise.</p> <p><i>(Protection of the Environment Operations (POEO) Act 1997)</i></p>

# 3. Notification Procedure

A pollution incident where there is a risk of 'material harm' (as defined by the POEO Act and reproduced in the Definitions section of this Plan) is required to be notified *immediately* to the EPA, Fire and Rescue NSW, SafeWork NSW, NSW Ministry of Health and local council.

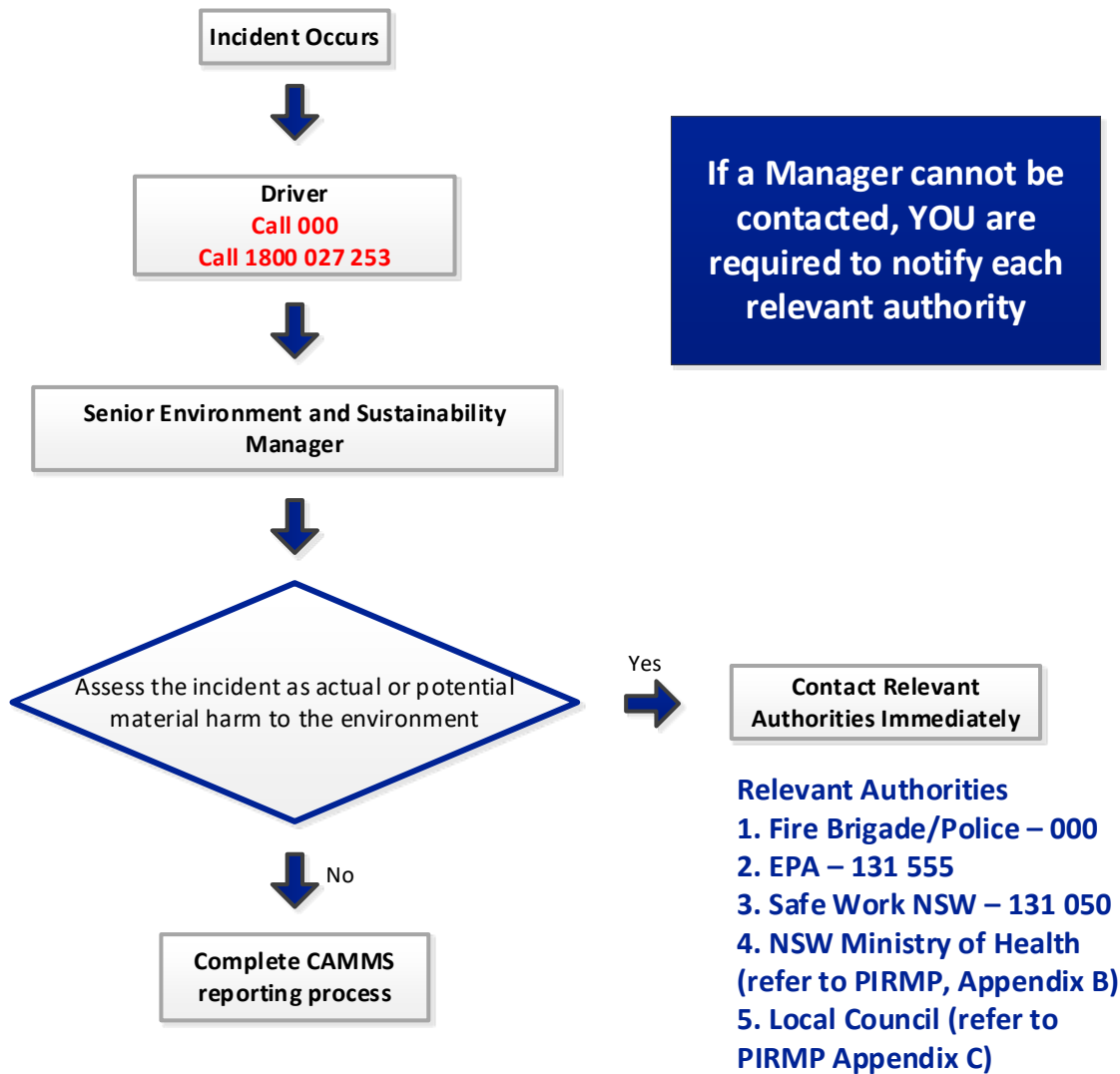
In the process of notifying the relevant authorities the following information must be communicated to each authority in accordance with the POEO Act (C 150) during pollution incidents causing or threatening material harm:

- 1. The time, date, nature, duration and location of the incident,**
- 2. The location of the place where pollution is occurring or is likely to occur,**
- 3. The nature, the estimated quantity or volume and the concentration of any pollutants involved, if known,**
- 4. The circumstances in which the incident occurred (including the cause of the incident, if known),**
- 5. The action taken or proposed to be taken to deal with the incident and any resulting pollution or threatened pollution, if known,**
- 6. Other information prescribed by the regulations**

The information required to be reported is only that information known to the person notifying the incident when the notification is given. If any of the above information is not known during initial notification but becomes known afterwards, that information must be forwarded to the relevant authorities.

# POLLUTION INCIDENT NOTIFICATION PROCEDURE

## Incident of actual/potential material harm



Material harm = harm to the health and safety of humans or ecosystems that is not trivial, or loss or property damage exceeding \$10,000

## 4. Contact Details

Table 1 summarises the contact details of the key individuals responsible for managing incident response and notifying the relevant authorities.

**Table 1 Emergency Contact Details**

Contact	Contact Number	Alternate Number
<b><i>TransGrid</i></b>		
TransGrid Emergency	1800 027 253	-
<b><i>Emergency Services – 000 (or 112 from a mobile phone)</i></b>		
Fire Brigade / Fire and Rescue NSW	000	(02) 9265 2999
Ambulance	000	112
Police	000	112
State Emergency Service	132 500	-
<b><i>Relevant Authorities</i></b>		
Environment Protection Authority (EPA)	Environment Line 131 555	-
SafeWork NSW	13 10 50 – 24 hour	-
NSW Ministry of Health	Refer to Appendix A	-
Local Council	Refer to Appendix B	-
NSW Office of Water	8281 7777	-

# 5. Communicating with the Community

The driver's immediate responsibility is to mitigate the incident and activate the Notification Procedure (Section 3) so that the relevant authorities can be notified by TransGrid. As such coordinating the notification of the affected community will be the responsibility of the Substations Manager, Head of Maintenance Programs and Senior Environment and Sustainability Manager, in coordination with emergency services personnel responsible for managing the response to the incident.

For a localised spill the immediate residents in the affected vicinity of the pollution incident may be notified by the driver or emergency services when given instruction from the relevant TransGrid manager. For a larger incident, where identified as appropriate by the relevant TransGrid manager, the wider community will be notified that an incident has occurred via local radio and/or television and/or the relevant local councils. Refer to Table 2 for a suggested list of radio and television agencies which may be notified by TransGrid depending on the location where the incident has occurred. Where an incident occurs outside of the Sydney Metropolitan Area not all stations provided in Table 2 may be transmitted over the affected area.

**Table 2 Media contact numbers**

Radio media	
ABC Radio	02 8333 2137
96.9 Nova	132 410
104.1 2day FM	13 10 60
104.9 Triple M	133 353
95.3 Smooth FM (formerly Vega)	13 59 50
954 AM 2UE	131 332
2GB	02 8514 9500
96.1 The Edge	02 9611 1961
Ethnic Radio (Radio Australia)	02 9755 7938
Television media	
Channel 10	02 9650 1010
Channel 9	02 9906 9999
Channel 7	02 8777 7777
ABC Television	02 8333 2137
SBS Television	1800 500 727
Ethnic TV (UBI World TV)	02 9776 2222



## Appendix A Public Health Unit – Referral List (NSW Ministry of Health)

Postcode	PHU	Postcode	PHU	Postcode	PHU	PHU Details
2000-2002	Randwick SESI PHU	2379-2382	Tamworth HNE PHU	2717	Broken Hill GW PHU	<b>Albury GS PHU (Greater Southern )</b> PO Box 3095, Albury, 2640
2004-2009	Camperdown SSW PHU	2386-2390	Tamworth HNE PHU	2720	Albury GS PHU	Phone: (02) 6080 8900 Fax: (02) 6080 8999 (secure)
2010-2011	Randwick SESI PHU	2395-2396	Dubbo GW PHU	2721	Bathurst GW PHU	<b>Bathurst GW PHU (Greater Western)</b> PO Box 143, Bathurst NSW 2795
2012-2017	Camperdown SSW PHU	2397-2411	Tamworth HNE PHU	2722	Albury GS PHU	Phone: (02) 6339 5601 Fax: (02) 6339 5173 (secure)
2018-2036	Randwick SESI PHU	2415	Newcastle HNE PHU	2725	Albury GS PHU	<b>Broken Hill GW PHU (Greater Western)</b> PO Box 457, Broken Hill, 2880
2037-2050	Camperdown SSW PHU	2420-2430	Newcastle HNE PHU	2726	Goulburn GS PHU	Phone: (08) 8080 1499 Fax: (08) 8080 1196 (secure)
2052	Randwick SESI PHU	2431	Port Macquarie NC PHU	2727-2733	Albury GS PHU	<b>Camperdown SSW PHU (Sydney South West)</b> PO Box 374 Camperdown 1450
2055-2114	Hornsby NSCC PHU	2439-2456	Port Macquarie NC PHU	2734	Broken Hill GW PHU	Phone: (02) 9515 9420 Fax: (02) 9515 9467 (secure)
2115-2118	Parramatta SW PHU	2460-2466	Lismore NC PHU	2735-2736	Albury GS PHU	<b>Dubbo GW PHU (Greater Western)</b> PO Box 739, Dubbo NSW 2830
2119-2122	Hornsby NSCC PHU	2469-2474	Lismore NC PHU	2737-2739	Broken Hill GW PHU	Phone: (02) 6841 5569 Fax: (02) 6841 5571 (secure)
2123-2125	Parramatta SW PHU	2475	Tamworth HNE PHU	2745	Camperdown SSW PHU	<b>Gosford CC PHU (Central Coast )</b> PO Box 361, Gosford 2250
2126	Hornsby NSCC PHU	2476-2490	Lismore NC PHU	2747-2751	Penrith SW PHU	Phone: (02) 4349 4845 Fax: (02) 4349 4850 (secure)
2127-2128	Parramatta SW PHU	2500-2502	Wollongong SESI PHU	2752	Camperdown SSW PHU	<b>Goulburn GS PHU (Greater Southern)</b> Locked Bag 11, Goulburn NSW 2580
2129-2140	Camperdown SSW PHU	2505-2508	Wollongong SESI PHU	2753-2760	Penrith SW PHU	Phone: (02) 4824 1837 Fax: (02) 4822 5038 (secure)
2141-2157	Parramatta SW PHU	2515-2522	Wollongong SESI PHU	2761-2770	Parramatta SW PHU	<b>Hornsby NS PHU (Northern Sydney)</b> Hornsby-Ku-ring-gai Hosp, Palmerston Rd, Hornsby NSW 2077
2158-2159	Hornsby NSCC PHU	2525-2530	Wollongong SESI PHU	2773-2786	Penrith SW PHU	Phone: (02) 9477 9400 Fax: (02) 9482 1358 (secure)
2160-2161	Parramatta SW PHU	2533-2535	Wollongong SESI PHU	2787	Bathurst GW PHU	<b>Lismore NC PHU (North Coast)</b> PO Box 498, Lismore, 2480
2162-2179	Camperdown SSW PHU	2536-2537	Goulburn GS PHU	2790-2800	Bathurst GW PHU	Phone: (02) 6620 7500 Fax: (02) 6620 2552 (secure)
2190-2200	Camperdown SSW PHU	2538-2541	Wollongong SESI PHU	2803	Goulburn GS PHU	<b>Newcastle HNE PHU (Hunter/New England )</b>

Postcode	PHU	Postcode	PHU	Postcode	PHU	PHU Details
2203-2204	Camperdown SSW PHU	2545-2551	Goulburn GS PHU	2804-2806	Bathurst GW PHU	Locked Bag 10, Wallsend, 2287 Phone: (02) 4924 6477 Fax: (02) 4924 6048 (secure)
2205	Randwick SESI PHU	2555-2560	Camperdown SSW PHU	2807	Goulburn GS PHU	<b>Parramatta SW PHU (Sydney West)</b> PO Box 7118, Parramatta BC NSW 212 Phone: (02) 9840 3603 Fax: (02) 9840 3591 (secure)
2206	Camperdown SSW PHU	2563-2579	Camperdown SSW PHU	2808-2810	Bathurst GW PHU	<b>Penrith SW PHU (Sydney West)</b> PO Box 63, Penrith, NSW 2751 Phone: (02) 4734 2022 Fax: (02) 4734 3444 (secure)
2207	Randwick SESI PHU	2580-2587	Goulburn GS PHU	2820-2831	Dubbo GW PHU	<b>Port Macquarie NC PHU (North Coast )</b> PO Box 126, Port Macquarie, NSW 2444 Phone: (02) 6588 2750 Fax: (02) 6588 2837
2208	Camperdown SSW PHU	2588-2590	Albury GS PHU	2832-2834	Broken Hill GW PHU	<b>Randwick SES PHU (South East Sydney)</b> Locked Bag 88, Randwick 2031 Phone: (02) 9382 8333 Fax: (02) 9382 8314 (secure)
2209-2210	Randwick SESI PHU	2594	Goulburn GS PHU	2835	Dubbo GW PHU	<b>Tamworth HNE PHU (Hunter/New England)</b> Locked Mail Bag 9783, NEMC NSW 2348 Phone: (02) 6764 8000 Fax: (02) 6766 3890 (secure)
2211-2214	Camperdown SSW PHU	2611	Goulburn GS PHU	2836	Broken Hill GW PHU	<b>Wollongong IS PHU Illawarra Shoalhaven)</b> Locked Mail Bag 9, Wollongong NSW 2500 Phone: (02) 4221 6700 Fax: (02) 4221 6759 (secure)
2216-2234	Randwick SESI PHU	2618-2633	Goulburn GS PHU	2839-2840	Broken Hill GW PHU	
2250-2252	Gosford NSCC PHU	2640-2647	Albury GS PHU	2842-2844	Dubbo GW PHU	
2256-2263	Gosford NSCC PHU	2648	Broken Hill GW PHU	2845-2847	Penrith SW PHU	
2264-2267	Newcastle HNE PHU	2649-2671	Albury GS PHU	2848-2849	Bathurst GW PHU	
2278-2338	Newcastle HNE PHU	2672	Bathurst GW PHU	2850-2852	Dubbo GW PHU	
2339-2356	Tamworth HNE PHU	2675	Albury GS PHU	2864-2877	Bathurst GW PHU	
2357	Dubbo GW PHU	2680-2681	Albury GS PHU	2878-2880	Broken Hill GW PHU	
2358-2361	Tamworth HNE PHU	2700-2714	Albury GS PHU	2890-2891	Wollongong SESI PHU	
2365	Tamworth HNE PHU	2715	Broken Hill GW PHU	2898	Broken Hill GW PHU	
2369-2372	Tamworth HNE PHU	2716	Albury GS PHU			

## Appendix B Local Council Contact List (NSW Division of Local Government)

ABS	COUNCIL	PHONE	FAX	EMAIL	WEB
	Bayside Council	1300 581 299	02 9562 1777	council@bayside.nsw.gov.au	<a href="http://www.bayside.nsw.gov.au">http://www.bayside.nsw.gov.au</a>
0	Dubbo Regional Council	02 6801 4000	02 6840 1700	dcc@dubbo.nsw.gov.au	<a href="http://www.dubbo.nsw.gov.au">http://www.dubbo.nsw.gov.au</a>
0	City of Parramatta Council	02 9806 5050	02 9806 5917	newcouncil@parracity.nsw.gov.au	<a href="http://www.parracity.nsw.gov.au">http://www.parracity.nsw.gov.au</a>
60	Albury City Council	02 6023 8111	02 6023 8190	info@alburycity.nsw.gov.au	<a href="http://www.alburycity.nsw.gov.au">http://www.alburycity.nsw.gov.au</a>
130	Armidale Regional Council	1300 136 833	02 6772 9275		<a href="http://www.armidaleregional.nsw.gov.au">http://www.armidaleregional.nsw.gov.au</a>
250	Ballina Shire Council	02 6686 4444	02 6686 7035	council@ballina.nsw.gov.au	<a href="http://www.ballina.nsw.gov.au">http://www.ballina.nsw.gov.au</a>
300	Balranald Shire Council	03 5020 1300	03 5020 1620	council@balranald.nsw.gov.au	<a href="http://www.balranald.nsw.gov.au">http://www.balranald.nsw.gov.au</a>
470	Bathurst Regional Council	02 6333 6111	02 6331 7211	council@bathurst.nsw.gov.au	<a href="http://www.bathurst.nsw.gov.au">http://www.bathurst.nsw.gov.au</a>
500	The Hills Shire Council	02 9843 0555	02 9843 0409	council@thehills.nsw.gov.au	<a href="http://www.thehills.nsw.gov.au">http://www.thehills.nsw.gov.au</a>
550	Bega Valley Shire Council	02 6499 2222	02 6499 2200	council@begavalley.nsw.gov.au	<a href="http://www.begavalley.nsw.gov.au">http://www.begavalley.nsw.gov.au</a>
600	Bellingen Shire Council	02 6655 7300	02 6655 2310	council@bellingen.nsw.gov.au	<a href="http://www.bellingen.nsw.gov.au">http://www.bellingen.nsw.gov.au</a>
650	Berrigan Shire Council	03 5888 5100	03 5885 2092	mail@berriganshire.nsw.gov.au	<a href="http://www.berriganshire.nsw.gov.au">http://www.berriganshire.nsw.gov.au</a>
750	Blacktown City Council	02 9839 6000	02 9831 1961	council@blacktown.nsw.gov.au	<a href="http://www.blacktown.nsw.gov.au">http://www.blacktown.nsw.gov.au</a>
800	Bland Shire Council	02 6972 2266	02 6972 2145	council@blandshire.nsw.gov.au	<a href="http://www.blandshire.nsw.gov.au">http://www.blandshire.nsw.gov.au</a>
850	Blayney Shire Council	02 6368 2104	02 6368 3290	council@blayney.nsw.gov.au	<a href="http://www.blayney.nsw.gov.au">http://www.blayney.nsw.gov.au</a>
900	Blue Mountains City Council	02 4780 5000	02 4780 5555	council@bmcc.nsw.gov.au	<a href="http://www.bmcc.nsw.gov.au">http://www.bmcc.nsw.gov.au</a>
950	Bogan Shire Council	02 6835 9000	02 6835 9011	admin@bogan.nsw.gov.au	<a href="http://www.bogan.nsw.gov.au">http://www.bogan.nsw.gov.au</a>
1150	Bourke Shire Council	02 6830 8000	02 6872 3030	bourkeshire@bourke.nsw.gov.au	<a href="http://www.bourke.nsw.gov.au">http://www.bourke.nsw.gov.au</a>
1200	Brewarrina Shire Council	02 6830 5100	02 6839 2100	breshire@brewarrina.nsw.gov.au	<a href="http://www.breshire.com">http://www.breshire.com</a>
1250	Broken Hill City Council	08 8080 3300	08 8080 3424	council@brokenhill.nsw.gov.au	<a href="http://www.brokenhill.nsw.gov.au">http://www.brokenhill.nsw.gov.au</a>

ABS	COUNCIL	PHONE	FAX	EMAIL	WEB
1300	Burwood Council	02 9911 9911	02 9911 9900	council@burwood.nsw.gov.au	<a href="http://www.burwood.nsw.gov.au">http://www.burwood.nsw.gov.au</a>
1350	Byron Shire Council	02 6626 7000	02 6684 3018	council@byron.nsw.gov.au	<a href="http://www.byron.nsw.gov.au">http://www.byron.nsw.gov.au</a>
1400	Cabonne Council	02 6392 3200	02 6392 3260	council@cabonne.nsw.gov.au	<a href="http://www.cabonne.nsw.gov.au">http://www.cabonne.nsw.gov.au</a>
1450	Camden Council	02 4654 7777	02 4654 7829	mail@camden.nsw.gov.au	<a href="http://www.camden.nsw.gov.au">http://www.camden.nsw.gov.au</a>
1500	Campbelltown City Council	02 4645 4000	02 4645 4111	council@campbelltown.nsw.gov.au	<a href="http://www.campbelltown.nsw.gov.au">http://www.campbelltown.nsw.gov.au</a>
1520	City of Canada Bay Council	02 9911 6555	02 9911 6550	council@canadabay.nsw.gov.au	<a href="http://www.canadabay.nsw.gov.au">http://www.canadabay.nsw.gov.au</a>
1570	Canterbury-Bankstown Council	1300 813 020	TBC	council@bankstown.nsw.gov.au	<a href="http://www.bankstown.nsw.gov.au">http://www.bankstown.nsw.gov.au</a>
1600	Carrathool Shire Council	02 6965 1900	02 6965 1379	council@carrathool.nsw.gov.au	<a href="http://www.carrathool.nsw.gov.au">http://www.carrathool.nsw.gov.au</a>
1650	Central Coast Council	02 4350 5555	TBC	ask@centralcoast.nsw.gov.au	<a href="http://www.centralcoast.nsw.gov.au">http://www.centralcoast.nsw.gov.au</a>
1700	Central Darling Shire Council	08 8083 8900	08 8091 5994	council@centraldarling.nsw.gov.au	<a href="http://www.centraldarling.nsw.gov.au">http://www.centraldarling.nsw.gov.au</a>
1720	Cessnock City Council	02 4993 4100	02 4993 2500	council@cessnock.nsw.gov.au	<a href="http://www.cessnock.nsw.gov.au">http://www.cessnock.nsw.gov.au</a>
1730	Clarence Valley Council	02 6643 0200	02 6642 7647	council@clarence.nsw.gov.au	<a href="http://www.clarence.nsw.gov.au">http://www.clarence.nsw.gov.au</a>
1750	Cobar Shire Council	02 6836 5888	02 6836 5889	mail@cobar.nsw.gov.au	<a href="http://www.cobar.nsw.gov.au">http://www.cobar.nsw.gov.au</a>
1800	Coffs Harbour City Council	02 6648 4000	02 6648 4199	coffs.council@chcc.nsw.gov.au	<a href="http://www.coffsharbour.nsw.gov.au">http://www.coffsharbour.nsw.gov.au</a>
2000	Coolamon Shire Council	02 6930 1800	02 6927 3168	council@coolamon.nsw.gov.au	<a href="http://www.coolamon.nsw.gov.au">http://www.coolamon.nsw.gov.au</a>
2150	Coonamble Shire Council	02 6827 1900	02 6822 1626	council@coonambleshire.nsw.gov.au	<a href="http://www.coonambleshire.nsw.gov.au">http://www.coonambleshire.nsw.gov.au</a>
2350	Cowra Shire Council	02 6340 2000	02 6340 2011	council@cowra.nsw.gov.au	<a href="http://www.cowracouncil.com.au">http://www.cowracouncil.com.au</a>
2380	Cumberland Council	02 9840 9840	02 9840 9734	council@cumberland.nsw.gov.au	<a href="http://www.cumberland.nsw.gov.au">http://www.cumberland.nsw.gov.au</a>
2700	Dungog Shire Council	02 4995 7777	02 4995 7750	shirecouncil@dungog.nsw.gov.au	<a href="http://www.dungog.nsw.gov.au">http://www.dungog.nsw.gov.au</a>
2730	Edward River Council	03 5898 3000	N/A	council@edwardriver.nsw.gov.au	<a href="http://www.edwardriver.nsw.gov.au">http://www.edwardriver.nsw.gov.au</a>
2750	Eurobodalla Shire Council	02 4474 1000	02 4474 1234	council@eurocoast.nsw.gov.au	<a href="http://www.esc.nsw.gov.au">http://www.esc.nsw.gov.au</a>
2850	Fairfield City Council	02 9725 0222	02 9725 4249	mail@fairfieldcity.nsw.gov.au	<a href="http://www.fairfieldcity.nsw.gov.au">http://www.fairfieldcity.nsw.gov.au</a>

ABS	COUNCIL	PHONE	FAX	EMAIL	WEB
2870	Federation Council	02 6033 8999	02 6033 3317	council@federationcouncil.nsw.gov.au	www.federationcouncil.nsw.gov.au
2900	Forbes Shire Council	02 6850 2300	02 6850 2399	forbes@forbes.nsw.gov.au	http://www.forbes.nsw.gov.au
2930	Georges River Council	02 9330 6400	N/A	mail@georgesriver.nsw.gov.au	http://www.georgesriver.nsw.gov.au
2950	Gilgandra Shire Council	02 6817 8800	02 6847 2521	council@gilgandra.nsw.gov.au	http://www.gilgandra.nsw.gov.au
3020	Glen Innes Severn Council	02 6730 2300	02 6732 3764	council@gisc.nsw.gov.au	http://www.gisc.nsw.gov.au
3310	Goulburn Mulwaree Council	02 4823 4444	02 4823 4456	council@goulburn.nsw.gov.au	http://www.goulburn.nsw.gov.au
3370	Greater Hume Shire Council	02 6036 0100	02 6036 2683	mail@greaterhume.nsw.gov.au	http://www.greaterhume.nsw.gov.au
3450	Griffith City Council	02 6962 8100	02 6962 7161	admin@griffith.nsw.gov.au	http://www.griffith.nsw.gov.au
3510	Cootamundra-Gundagai Regional Council	02 6940 2100	02 6940 2127	mail@cgrc.nsw.gov.au	http://www.cootamundra.nsw.gov.au
3550	Gunnedah Shire Council	02 6740 2100	02 6740 2119	council@infogunnedah.com.au	http://www.gunnedah.nsw.gov.au
3660	Gwydir Shire Council	02 6724 2000	02 6724 1771	mail@gwydir.nsw.gov.au	http://www.gwydirshire.com
3750	Port Macquarie-Hastings Council	02 6581 8111	02 6581 8123	council@pmhc.nsw.gov.au	http://www.pmhc.nsw.gov.au
3800	Hawkesbury City Council	02 4560 4444	02 4587 7740	council@hawkesbury.nsw.gov.au	http://www.hawkesbury.nsw.gov.au
3850	Hay Shire Council	02 6993 1003	02 6993 1288	mail@hay.nsw.gov.au	http://www.hay.nsw.gov.au
3910	Hilltops Council	02 6380 1200	02 6390 1299	mail@hilltops.nsw.gov.au	http://www.hilltops.nsw.gov.au
4000	The Council of the Shire of Hornsby	02 9847 6666	02 9847 6999	hsc@hornsby.nsw.gov.au	http://www.hornsby.nsw.gov.au
4100	The Council of the Municipality of Hunters Hill	02 9879 9400	02 9809 7338	council@huntershill.nsw.gov.au	http://www.huntershill.nsw.gov.au
4170	Inner West Council	02 9716 1800	02 9367 1111	council@innerwest.nsw.gov.au	http://www.innerwest.nsw.gov.au
4200	Inverell Shire Council	02 6728 8288	02 6728 8277	council@inverell.nsw.gov.au	http://www.inverell.nsw.gov.au
4300	Junee Shire Council	02 6924 8100	02 6924 2497	jsc@junee.nsw.gov.au	http://www.junee.nsw.gov.au
4350	Kempsey Shire Council	02 6566 3200	02 6566 3205	ksc@kempsey.nsw.gov.au	http://www.kempsey.nsw.gov.au
4400	The Council of the Municipality of Kiama	02 4232 0444	02 4232 0555	council@kiama.nsw.gov.au	http://www.kiama.nsw.gov.au

ABS	COUNCIL	PHONE	FAX	EMAIL	WEB
4500	Ku-ring-gai Council	02 9424 0000	02 9424 0001	kmc@kmc.nsw.gov.au	<a href="http://www.kmc.nsw.gov.au">http://www.kmc.nsw.gov.au</a>
4550	Kyogle Council	02 6632 1611	02 6632 2228	council@kyogle.nsw.gov.au	<a href="http://www.kyogle.nsw.gov.au">http://www.kyogle.nsw.gov.au</a>
4600	Lachlan Shire Council	02 6895 1900	02 6895 3478	council@lachlan.nsw.gov.au	<a href="http://www.lachlan.nsw.gov.au">http://www.lachlan.nsw.gov.au</a>
4650	Lake Macquarie City Council	02 4921 0333	02 4958 7257	council@lakemac.nsw.gov.au	<a href="http://www.lakemac.com.au">http://www.lakemac.com.au</a>
4700	Lane Cove Municipal Council	02 9911 3555	02 9911 3600	lccouncil@lanecove.nsw.gov.au	<a href="http://www.lanecove.nsw.gov.au">http://www.lanecove.nsw.gov.au</a>
4750	Leeton Shire Council	02 6953 0911	02 6953 3337	council@leeton.nsw.gov.au	<a href="http://www.leeton.nsw.gov.au">http://www.leeton.nsw.gov.au</a>
4850	Lismore City Council	02 6625 0500	02 6625 0400	council@lismore.nsw.gov.au	<a href="http://www.lismore.nsw.gov.au">http://www.lismore.nsw.gov.au</a>
4880	City of Lithgow Council	02 6354 9999	02 6351 4259	council@lithgow.nsw.gov.au	<a href="http://www.council.lithgow.com">http://www.council.lithgow.com</a>
4900	Liverpool City Council	02 9821 9222	02 9821 9333	lcc@liverpool.nsw.gov.au	<a href="http://www.liverpool.nsw.gov.au">http://www.liverpool.nsw.gov.au</a>
4920	Liverpool Plains Shire Council	02 6746 1755	02 6746 3255	lpssc@lpssc.nsw.gov.au	<a href="http://www.lpssc.nsw.gov.au">http://www.lpssc.nsw.gov.au</a>
4950	Lockhart Shire Council	02 6920 5305	02 6920 5247	mail@lockhart.nsw.gov.au	<a href="http://www.lockhart.nsw.gov.au">http://www.lockhart.nsw.gov.au</a>
5050	Maitland City Council	02 4934 9700	02 4933 3209	mcc@maitland.nsw.gov.au	<a href="http://www.maitland.nsw.gov.au">http://www.maitland.nsw.gov.au</a>
5240	Mid-Coast Council	02 6591 7222	02 6591 7200	council@midcoast.nsw.gov.au	<a href="http://www.midcoast.nsw.gov.au">http://www.midcoast.nsw.gov.au</a>
5270	Mid-Western Regional Council	02 6378 2850	02 6378 2815	council@midwestern.nsw.gov.au	<a href="http://www.midwestern.nsw.gov.au">http://www.midwestern.nsw.gov.au</a>
5300	Moree Plains Shire Council	02 6757 3222	02 6752 3934	council@mpsc.nsw.gov.au	<a href="http://www.mpsc.nsw.gov.au">http://www.mpsc.nsw.gov.au</a>
5350	Mosman Municipal Council	02 9978 4000	02 9978 4132	council@mosman.nsw.gov.au	<a href="http://www.mosman.nsw.gov.au">http://www.mosman.nsw.gov.au</a>
5520	Murray River Council	1300 087 004	03 5884 3417	admin@murrayriver.nsw.gov.au	<a href="http://www.murrayriver.nsw.gov.au">http://www.murrayriver.nsw.gov.au</a>
5560	Murrumbidgee Council	1300 676 243	TBC	jerilderie@murrumbidgee.nsw.gov.au	<a href="http://www.murrumbidgee.nsw.gov.au">http://www.murrumbidgee.nsw.gov.au</a>
5650	Muswellbrook Shire Council	02 6549 3700	02 6549 3701	council@muswellbrook.nsw.gov.au	<a href="http://www.muswellbrook.nsw.gov.au">http://www.muswellbrook.nsw.gov.au</a>
5700	Nambucca Shire Council	02 6568 2555	02 6568 2201	council@nambucca.nsw.gov.au	<a href="http://www.nambucca.nsw.gov.au">http://www.nambucca.nsw.gov.au</a>
5750	Narrabri Shire Council	02 6799 6866	02 6799 6888	council@narrabri.nsw.gov.au	<a href="http://www.narrabri.nsw.gov.au">http://www.narrabri.nsw.gov.au</a>
5800	Narrandera Shire Council	02 6959 5510	02 6959 1884	council@narrandera.nsw.gov.au	<a href="http://www.narrandera.nsw.gov.au">http://www.narrandera.nsw.gov.au</a>

ABS	COUNCIL	PHONE	FAX	EMAIL	WEB
5850	Narromine Shire Council	02 6889 9999	02 6889 9998	mail@narromine.nsw.gov.au	<a href="http://www.narromine.nsw.gov.au">http://www.narromine.nsw.gov.au</a>
5900	Newcastle City Council	02 4974 2000	02 4974 2222	mail@ncc.nsw.gov.au	<a href="http://www.newcastle.nsw.gov.au">http://www.newcastle.nsw.gov.au</a>
5950	North Sydney Council	02 9936 8100	02 9936 8177	council@northsydney.nsw.gov.au	<a href="http://www.northsydney.nsw.gov.au">http://www.northsydney.nsw.gov.au</a>
5990	Northern Beaches Council	02 9942 2111	02 9971 4522	council@northernbeaches.nsw.gov.au	<a href="http://www.northernbeaches.nsw.gov.au">http://www.northernbeaches.nsw.gov.au</a>
6110	Oberon Council	02 6329 8100	02 6329 8142	council@oberon.nsw.gov.au	<a href="http://www.oberon.nsw.gov.au">http://www.oberon.nsw.gov.au</a>
6150	Orange City Council	02 6393 8000	02 6393 8199	council@orange.nsw.gov.au	<a href="http://www.orange.nsw.gov.au">http://www.orange.nsw.gov.au</a>
6200	Parkes Shire Council	02 6861 2333	02 6862 3946	council@parkes.nsw.gov.au	<a href="http://www.parkes.nsw.gov.au">http://www.parkes.nsw.gov.au</a>
6350	Penrith City Council	02 4732 7777	02 4732 7958	pencit@penrithcity.nsw.gov.au	<a href="http://www.penrithcity.nsw.gov.au">http://www.penrithcity.nsw.gov.au</a>
6400	Port Stephens Council	02 4980 0255	02 4987 3612	council@portstephens.nsw.gov.au	<a href="http://www.portstephens.nsw.gov.au">http://www.portstephens.nsw.gov.au</a>
6490	Queanbeyan-Palerang Regional Council	02 6285 6000	02 6285 6666	council@qprc.nsw.gov.au	<a href="http://www.qprc.nsw.gov.au">http://www.qprc.nsw.gov.au</a>
6550	Randwick City Council	02 9399 0999	02 9319 1510	council@randwick.nsw.gov.au	<a href="http://www.randwick.nsw.gov.au">http://www.randwick.nsw.gov.au</a>
6610	Richmond Valley Council	02 6660 0300	02 6660 1300	council@richmondvalley.nsw.gov.au	<a href="http://www.richmondvalley.nsw.gov.au">http://www.richmondvalley.nsw.gov.au</a>
6700	Council of the City of Ryde	02 9952 8222	02 9952 8070	cityofryde@ryde.nsw.gov.au	<a href="http://www.ryde.nsw.gov.au">http://www.ryde.nsw.gov.au</a>
6900	Shellharbour City Council	02 4221 6111	02 4221 6016	records@shellharbour.nsw.gov.au	<a href="http://www.shellharbour.nsw.gov.au">http://www.shellharbour.nsw.gov.au</a>
6950	Shoalhaven City Council	02 4429 3111	02 4422 1816	council@shoalhaven.nsw.gov.au	<a href="http://www.shoalhaven.nsw.gov.au">http://www.shoalhaven.nsw.gov.au</a>
7000	Singleton Council	02 6578 7290	02 6572 4197	ssc@singleton.nsw.gov.au	<a href="http://www.singleton.nsw.gov.au">http://www.singleton.nsw.gov.au</a>
7040	Snowy Monaro Regional Council	1300 345 345	TBC	council@snowymonaro.nsw.gov.au	<a href="http://www.snowymonaro.nsw.gov.au">http://www.snowymonaro.nsw.gov.au</a>
7080	Snowy Valleys Council	1800 069 280	TBC	admin@snowyvalleys.nsw.gov.au	<a href="http://www.snowyvalleys.nsw.gov.au">http://www.snowyvalleys.nsw.gov.au</a>
7100	Strathfield Municipal Council	02 9748 9999	02 9764 1034	council@strathfield.nsw.gov.au	<a href="http://www.strathfield.nsw.gov.au">http://www.strathfield.nsw.gov.au</a>
7150	Sutherland Shire Council	02 9710 0333	02 9710 0265	ssc@ssc.nsw.gov.au	<a href="http://www.sutherlandshire.nsw.gov.au">http://www.sutherlandshire.nsw.gov.au</a>
7210	Council of the City of Sydney	02 9265 9333	02 9265 9222	council@cityofsydney.nsw.gov.au	<a href="http://www.cityofsydney.nsw.gov.au">http://www.cityofsydney.nsw.gov.au</a>
7310	Tamworth Regional Council	02 6767 5555	02 6767 5499	trc@tamworth.nsw.gov.au	<a href="http://www.tamworth.nsw.gov.au">http://www.tamworth.nsw.gov.au</a>

ABS	COUNCIL	PHONE	FAX	EMAIL	WEB
7350	Temora Shire Council	02 6980 1100	02 6980 1138	temshire@temora.nsw.gov.au	<a href="http://www.temora.nsw.gov.au">http://www.temora.nsw.gov.au</a>
7400	Tenterfield Shire Council	02 6736 6000	02 6736 6005	council@tenterfield.nsw.gov.au	<a href="http://www.tenterfield.nsw.gov.au">http://www.tenterfield.nsw.gov.au</a>
7550	Tweed Shire Council	02 6670 2400	02 6670 2429	tsc@tweed.nsw.gov.au	<a href="http://www.tweed.nsw.gov.au">http://www.tweed.nsw.gov.au</a>
7620	Upper Hunter Shire Council	02 6540 1100	02 6545 2671	council@upperhunter.nsw.gov.au	<a href="http://www.upperhunter.nsw.gov.au">http://www.upperhunter.nsw.gov.au</a>
7640	Upper Lachlan Shire Council	02 4830 1000	02 4845 1426	council@upperlachlan.nsw.gov.au	<a href="http://www.upperlachlan.nsw.gov.au">http://www.upperlachlan.nsw.gov.au</a>
7650	Uralla Shire Council	02 6778 6300	02 6778 5073	council@uralla.nsw.gov.au	<a href="http://www.uralla.nsw.gov.au">http://www.uralla.nsw.gov.au</a>
7750	Wagga Wagga City Council	1300 292 442	02 6926 9199	Council@wagga.nsw.gov.au	<a href="http://www.wagga.nsw.gov.au">http://www.wagga.nsw.gov.au</a>
7850	Walcha Council	02 6774 2500	02 6777 1181	council@walcha.nsw.gov.au	<a href="http://www.walcha.nsw.gov.au">http://www.walcha.nsw.gov.au</a>
7900	Walgett Shire Council	02 6828 1399	02 6828 1608	admin@walgett.nsw.gov.au	<a href="http://www.walgett.nsw.gov.au">http://www.walgett.nsw.gov.au</a>
7950	Warren Shire Council	02 6847 6600	02 6847 6633	Council@warren.nsw.gov.au	<a href="http://www.warren.nsw.gov.au">http://www.warren.nsw.gov.au</a>
8020	Warrumbungle Shire Council	02 6849 2000	02 6842 1337	info@warrumbungle.nsw.gov.au	<a href="http://www.warrumbungle.nsw.gov.au">http://www.warrumbungle.nsw.gov.au</a>
8050	Waverley Council	02 9083 8000	02 9387 1820	waver@waverley.nsw.gov.au	<a href="http://www.waverley.nsw.gov.au">http://www.waverley.nsw.gov.au</a>
8100	Weddin Shire Council	02 6343 1212	02 6343 1203	mail@weddin.nsw.gov.au	<a href="http://weddin.local-e.nsw.gov.au">http://weddin.local-e.nsw.gov.au</a>
8200	Wentworth Shire Council	03 5027 5027	03 5027 5000	council@wentworth.nsw.gov.au	<a href="http://www.wentworth.nsw.gov.au">http://www.wentworth.nsw.gov.au</a>
8250	Willoughby City Council	02 9777 1000	02 9777 1038	email@willoughby.nsw.gov.au	<a href="http://www.willoughby.nsw.gov.au">http://www.willoughby.nsw.gov.au</a>
8350	Wingecarribee Shire Council	02 4868 0888	02 4869 1203	Records@wsc.nsw.gov.au	<a href="http://www.wsc.nsw.gov.au">http://www.wsc.nsw.gov.au</a>
8400	Wollondilly Shire Council	02 4677 1100	02 4677 2339	council@wollondilly.nsw.gov.au	<a href="http://www.wollondilly.nsw.gov.au">http://www.wollondilly.nsw.gov.au</a>
8450	Wollongong City Council	02 4227 7111	02 4227 7277	council@wollongong.nsw.gov.au	<a href="http://www.wollongong.nsw.gov.au">http://www.wollongong.nsw.gov.au</a>
8500	Woollahra Municipal Council	02 9391 7000	02 9391 7044	records@woollahra.nsw.gov.au	<a href="http://www.woollahra.nsw.gov.au">http://www.woollahra.nsw.gov.au</a>
8710	Yass Valley Council	02 6226 1477	02 6226 2598	council@yass.nsw.gov.au	<a href="http://www.yassvalley.nsw.gov.au">http://www.yassvalley.nsw.gov.au</a>