

# Mount Piper to Wallerawang Transmission Line Upgrade Project Community Newsletter

November 2025



## Message from the Project Director



This edition of the newsletter provides a wrap up of the Environmental Impact Statement (EIS) Public Exhibition. Thank you to everyone who came to the EIS Community Information Sessions and to everyone who provided feedback. The project team is currently reviewing all submissions received by the Department of Planning Housing and Infrastructure (DPHI) and will provide a response in the Response to Submissions.

I am also pleased to announce Transgrid's partnership with Zinfra as the chosen construction delivery partner. Zinfra is a leading specialist provider in the electricity and gas infrastructure market that is driving Australia's future energy transition. I look forward to working with them as we build the future grid to enable greater renewable integration.

*Daryn Mullen*  
Project Director

## In this issue:

---

EIS Public Exhibition has finished

---

---

What happens next?

---

---

Community information sessions wrap up

---

---

Restoring the mine transporter at Lake Wallace Park

---







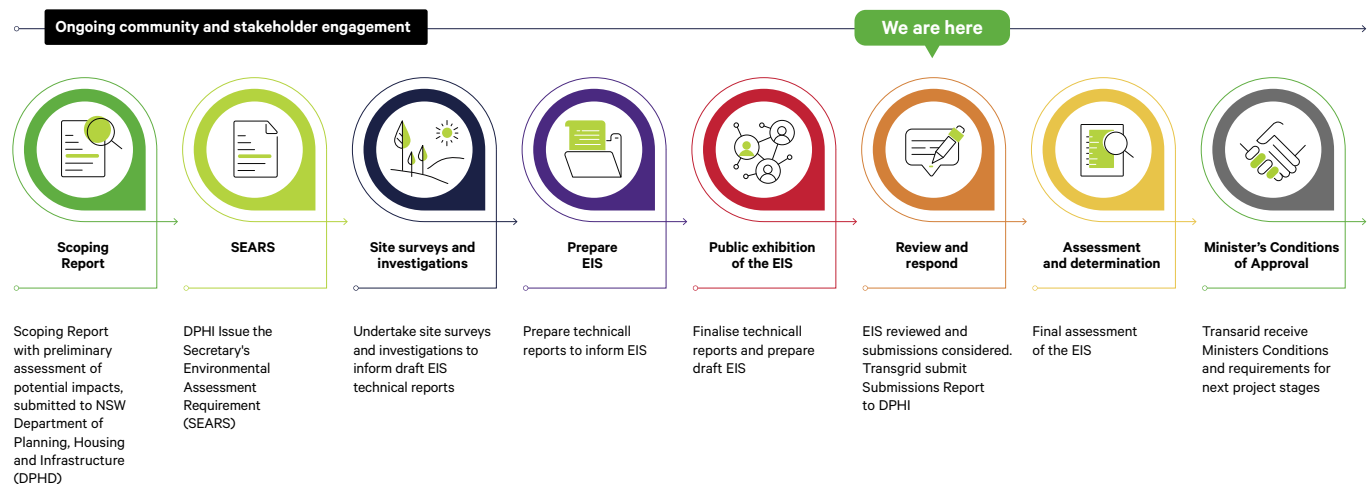
## Key project updates

The Environmental Impact Statement (EIS) public exhibition has finished.

Thank you to everyone who made a submission to the EIS. We received a total of 53 public submissions, from community members, government agencies and other interested parties.

The submissions have been published on the [Planning Portal](#) website.

The project team is currently reviewing submissions and will prepare a Response to Submissions to be published on the Planning Portal website by the end of 2025.



## What happens next?

Once the Response to Submissions is completed, the Department of Planning Housing and Infrastructure (DPHI) will complete a final assessment of the EIS including community feedback and make its determination. If approval is granted, the NSW Minister for Planning and Public Spaces will provide a list of Conditions of Approval for the next stage of the project.

The EIS and Minister's determination will then be reviewed by the Australian Department of Climate Change, Energy, the Environment

and Water (DCCEEW). They will then make a decision on if they will approve the project and what conditions of approval will be required.

Subject to planning approvals, construction on the project would commence in late 2026 and be completed by mid 2028.

Image 1: 330kV transmission structure along project alignment.







## In the community

### EIS Public Exhibition community information session wrap-up

We visited Portland and Wallerawang during the EIS Public Exhibition to provide the community with an opportunity to chat with us or ask questions about the Project. We heard your views on a variety of topics including minimising environmental impacts, plans for worker accommodation and proposals to minimise the visual impact of the new transmission structures.



**Image 2:** Transgrid team member Rebecca Andrews at the Wallerawang Library Community Information Session.



**Image 3:** Transgrid team members (from left) Emily Eldridge, Ben James, Rebecca Andrews and Raymond Vo at the Portland Library Community Information Session.

### Restoring the mine transporter at Lake Wallace Park

A celebration of the completed restoration of the mine transporter at Lake Wallace Park was held on 22 September. Transgrid team member Rochelle Manalili joined the celebration with representatives of the Wallerawang Lidsdale Progress Association, Lithgow City Council, community members and Channel 7 News!

The mine transporter is a popular feature of the Lake Wallace playground for kids to climb and play on. For adults, the mine transporter is a reminder of the area's important heritage as a mining town.

The restoration of the mine transporter has taken three years to complete and included sand blasting and repainting the equipment. The project was funded by the Transgrid Community Partnership Program.



**Image 4:** The restored mine transporter at Lake Wallace Park.



**Image 5:** Representatives from the Wallerawang Lidsdale Progress Association, Lithgow City Council, members of the community and Transgrid in front of the restored mine transporter.



## About the Project

The Mount Piper to Wallerawang Transmission Line Upgrade Project comprises of the construction and operation of approximately 8 km of new 330 kV transmission line between the Mount Piper and Wallerawang 330 kV substations, on the lands of the Wiradjuri people and within the local government area of Lithgow. Transgrid listened to feedback from community and key stakeholders in identifying and assessing routes for the project and announced a preferred route in December 2023. For more information including the preferred route please visit [www.transgrid.com.au/wallerawang](http://www.transgrid.com.au/wallerawang)

The Project will carry out upgrades to our transmission network in the State's Central Tablelands to support the NSW Government's delivery of the Central-West Orana Renewable Energy Zone (REZ). These upgrades will strengthen and reinforce the grid in the Central Tablelands, helping to ensure that power from the Central-West Orana REZ can be reliably moved back into the grid and to consumers.

### Project benefits

If approved, the Project will deliver a range of benefits including:



Cheaper electricity – improving the affordability of electricity for consumers by increasing supply and driving down electricity prices



Improved reliability – delivering large amounts of new energy and strengthening and reinforcing the grid in the local region



Reduced emissions – a greater mix of renewable energy in the National Electricity Market

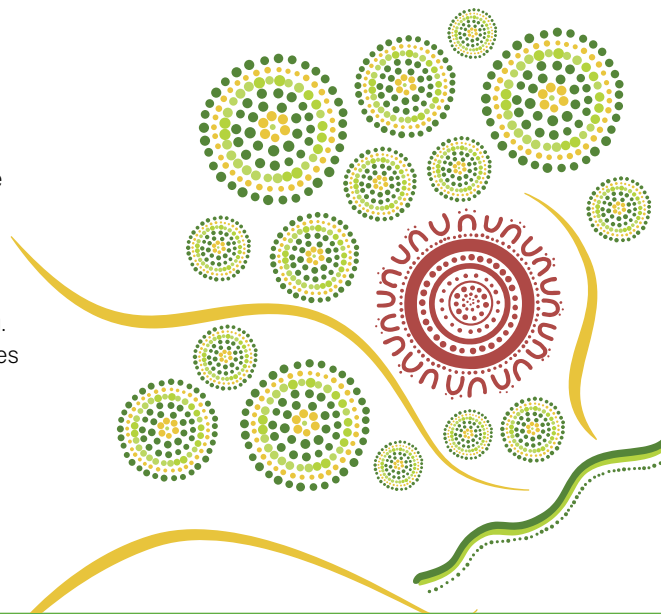


New local jobs – opportunities for local workers and businesses during construction

### Acknowledgement of Country

Transgrid acknowledges the Wiradjuri people as the Traditional Owners of the lands on which the preferred route is located. Traditional Owners have lived in the area for thousands of years and have an enduring custodianship and connection over the land and waterways of this region.

We pay our respects to the people and the Elders past, present and emerging. And we celebrate the diversity of Aboriginal peoples and their ongoing cultures and connections to the land and water.



### Connect with us

Transgrid is committed to working with landowners and communities through the development of the Project. **Please connect with us for more information.**



1800 222 537 (free call)  
[network.solutions@transgrid.com.au](mailto:network.solutions@transgrid.com.au)

Find out more at:  
[transgrid.com.au/wallerawang](http://transgrid.com.au/wallerawang)

**Privacy statement:** Transgrid recognises the importance of privacy and protecting the personal information it holds, uses and discloses in line with the Privacy Act. It is committed to protecting personal information and handling personal information responsibly and in accordance with its obligations.