

VNI West Community Consultative Group

Meeting 11 – 18 September 2025
Moulamein

Acknowledgement of Country

We would like to acknowledge the Wiradjuri, Wamba Wamba, Perrepa Perrepa and Yorta Yorta people as the custodians of the lands and waters on which we meet today.

We pay respect to Elders past and present.



Agenda

Time	Agenda item	Time allocated	Presenter
9:45 – 10:00	Morning tea	15 mins	
10:00 – 10:15	Welcome <ul style="list-style-type: none">Acknowledgement of CountryIntroductionsHousekeeping and review of previous minutes	15 mins	Brendan Blakeley
10:15 – 11:15	What are you hearing?	60 Mins	Brendan Blakeley
11:15 – 11:45	Acting Project Director's update <ul style="list-style-type: none">Property updateEnvironment updateCommunity update	30 mins	Meredith Butler
11:45 – 12:25	Property Management Plans	40 mins	Clint Hansell
12:25 – 12:50	EIS Exhibition update <ul style="list-style-type: none">EngagementResponse to submissions	25 mins	Nathan Menser/Geoff Hudson
12:50 - 1:00pm	Wrap up and close	10 Mins	Brendan Blakeley

Review of Meeting 11

Minutes and action items



Action items

Agenda item	Description	Responsible	Status
1. Welcome	Transgrid to investigate whether a mechanism exists to direct biodiversity offsets funds to a specific region.	Geoff Hudson	
2. What are you hearing?	Transgrid to consider opportunities to indicate proposed tower locations to landholders.	Nathan Menser	On hold / carry forward
	Transgrid to develop broader communications material on the overall functioning of the electricity network and the how Transgrid's major transmission projects fit into it.	Nathan Menser	On hold / carry forward
	Transgrid to review approach taken with landholder regarding construction compound.	Nathan Menser	
	DB to provide contact details for landowner for Transgrid inspection of vegetation clearing.	DB	
	Transgrid to consider if there is an impact to carbon status for landholders resulting from vegetation removal required for the project.	Geoff Hudson/Ben Doran	Not currently relevant
	GH and ML to meet about Concord property.	Geoff Hudson	Completed – 20/08
3. Project Update	Transgrid to consider whether it can provide community benefit in the form of in-kind engineering support for local projects.	Paul McFadyen	
	Can the network inspections map on the Transgrid website include anticipated flight altitude?	Nathan Menser	

What are you hearing?

Brendan Blakeley



Project update

Meredith Butler

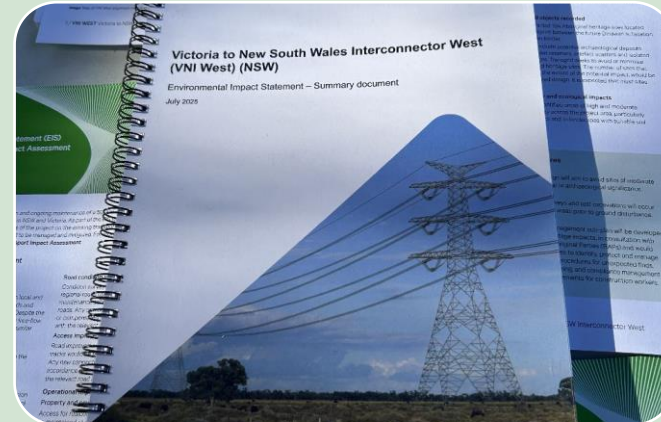


Project update



EIS Exhibition

Exhibition closed on
29 August 2025.
DPHI advised receipt of
119 public submissions;
and **25** government
submissions
[details later
in slide pack]



Submissions Report

Transgrid is collating
and analysing to
prepare responses.
[details later
in slide pack]



Project pathway

Transgrid is working
with EnergyCo to map
out detail on how
SWREZ generators will
connect to Dinawan –
while maintaining
prudent and efficient
delivery of VNI West.



Social legacy

33 projects / initiatives
put forward in our
recent Social Legacy
EOI process.

Property update



Property Update

- **All formal Offer Letters** issued to directly affected landowners:
 - February / March 2025: Dinawan to NSW/VIC Border (Section 10A)
 - July 2025: Line 51 (Wagga) – letter issued under commercial terms, as Transgrid will work within an existing easement on property.
- **Sept 2025:** Line 51 landowners progressing to acceptance of terms; survey works planned 28 September.
- **Negotiations** commenced in accordance with *Just Terms Act*.
- **Landholders are generally engaged** across the project.
- Transgrid is **receiving advisory on valuations from landowner's representatives**.
Transgrid covers reasonable fees for landholders in seeking legal and valuation advice.



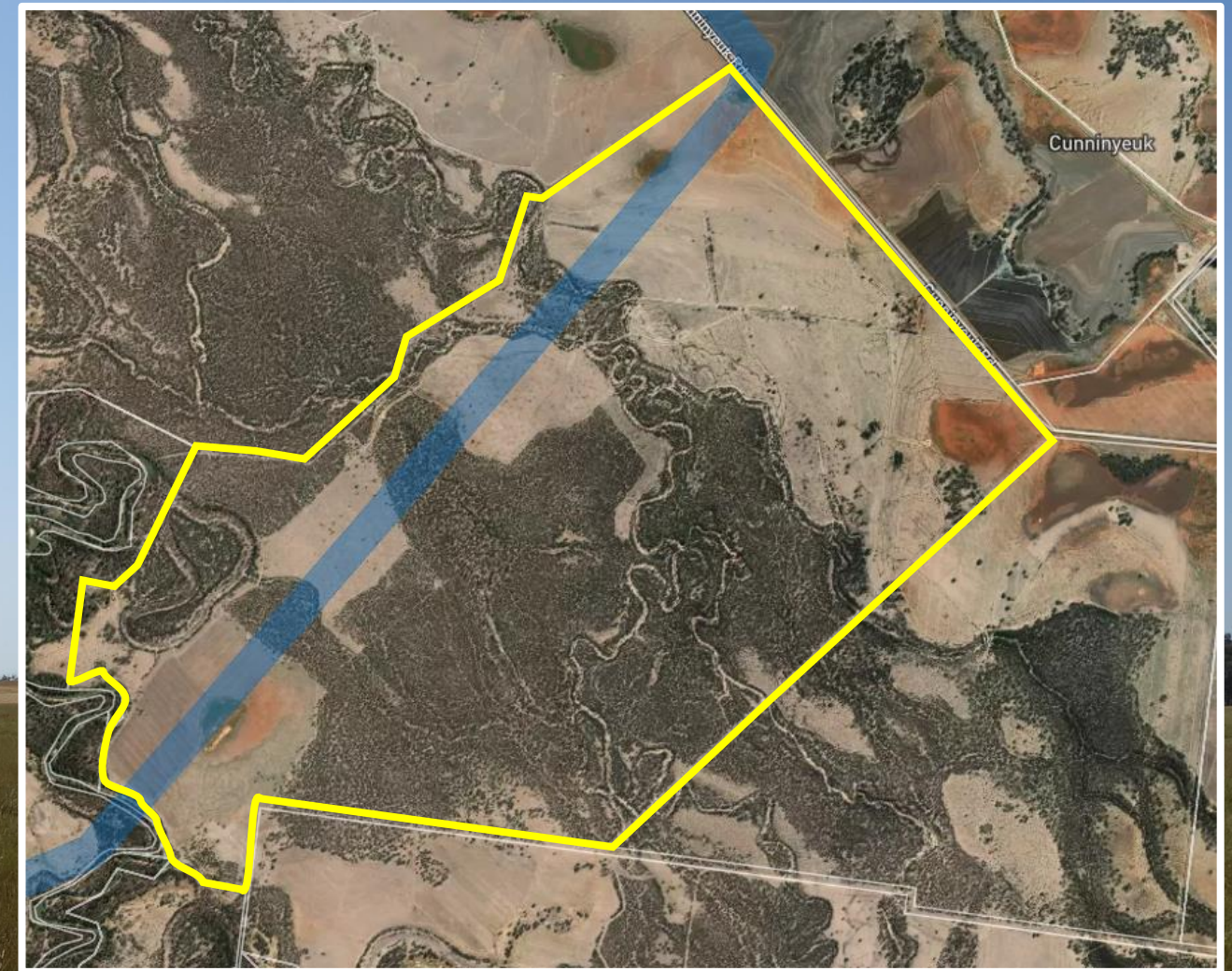
Environment update



Biodiversity: Farm Management EOI

Concord property

- Several Indigenous businesses / Registered Aboriginal Parties have provided tender documentation for farm management (Indigenous Land Management).
- Transgrid has now finished this tender process
- Successful Tenderer: A2B
- Any specific cultural heritage assessments will continue to involve local RAPs



Community and Social Legacy



Community Investment and Benefits Update

EOIs



31 July

A total of 33 EOIs received.

Over \$80 million in project cost estimates identified.

Initiative themes include:

- Workforce development / careers / business development
- Community facilities / initiatives
- First Nations initiatives
- Housing
- Education
- Early Childhood / Childcare
- Aged Care; and
- Environmental.

Additional Regional initiatives being considered:

- Telecommunications / weather monitoring & fire detection systems
- Road infrastructure upgrades
- Community energy projects and micro-grids
- Legacy housing
- Local workforce development & training.

Community benefits & investment submission timeline



Property Management Plans



What is a Property Management Plan (PMP)?

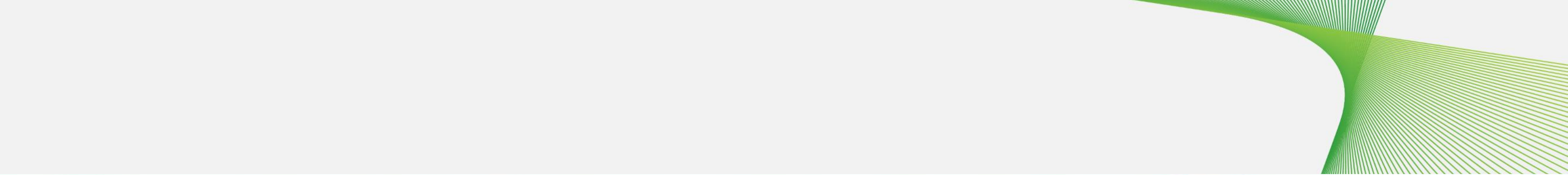
- The PMP forms part of the Option Agreement and sets out obligations for Transgrid and its Delivery Partners relating to property access, consultation and communications throughout the project
- It applies from the date the Option Agreement is entered into until Project completion
- It covers standard items and requirements that apply to properties throughout the project's life cycle
- It also covers property specific items that may be unique to the individual property
- Includes a detailed map with key features, access tracks, gates, infrastructure, watercourses, construction corridor etc.

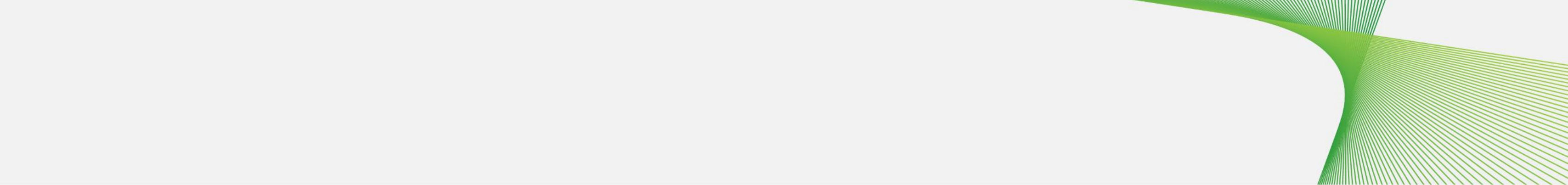


Transgrid's PMP Process Overview

- Transgrid's PMP process has evolved over recent Major Projects such as PEC and HumeLink
- Unknown project impacts and timing of key work activities
- The intent of a PMP:
 - While legally binding – Is written in layman terms that are clear and easy to interpret and understand
 - Provides Landowners as understanding regarding property access and impacts, and a commitment to ongoing engagement throughout the project
 - Sets clear obligations and requirements of Delivery Partners to adhere to throughout the project.
- The PMP template covers standard items such as:
 - Construction planning
 - Communication and consultation with Landholders
 - Property access throughout the project
 - Biosecurity issues
 - Livestock management
 - Cropping impacts
 - Vegetation management etc.
- Property specific items are of high importance to Landholders:
 - Captured in Schedule 1 (see example PMP)
- A consistent PMP template and property specific Schedule 1 items greatly assists in the PMP to be adhered to and administered throughout the project



























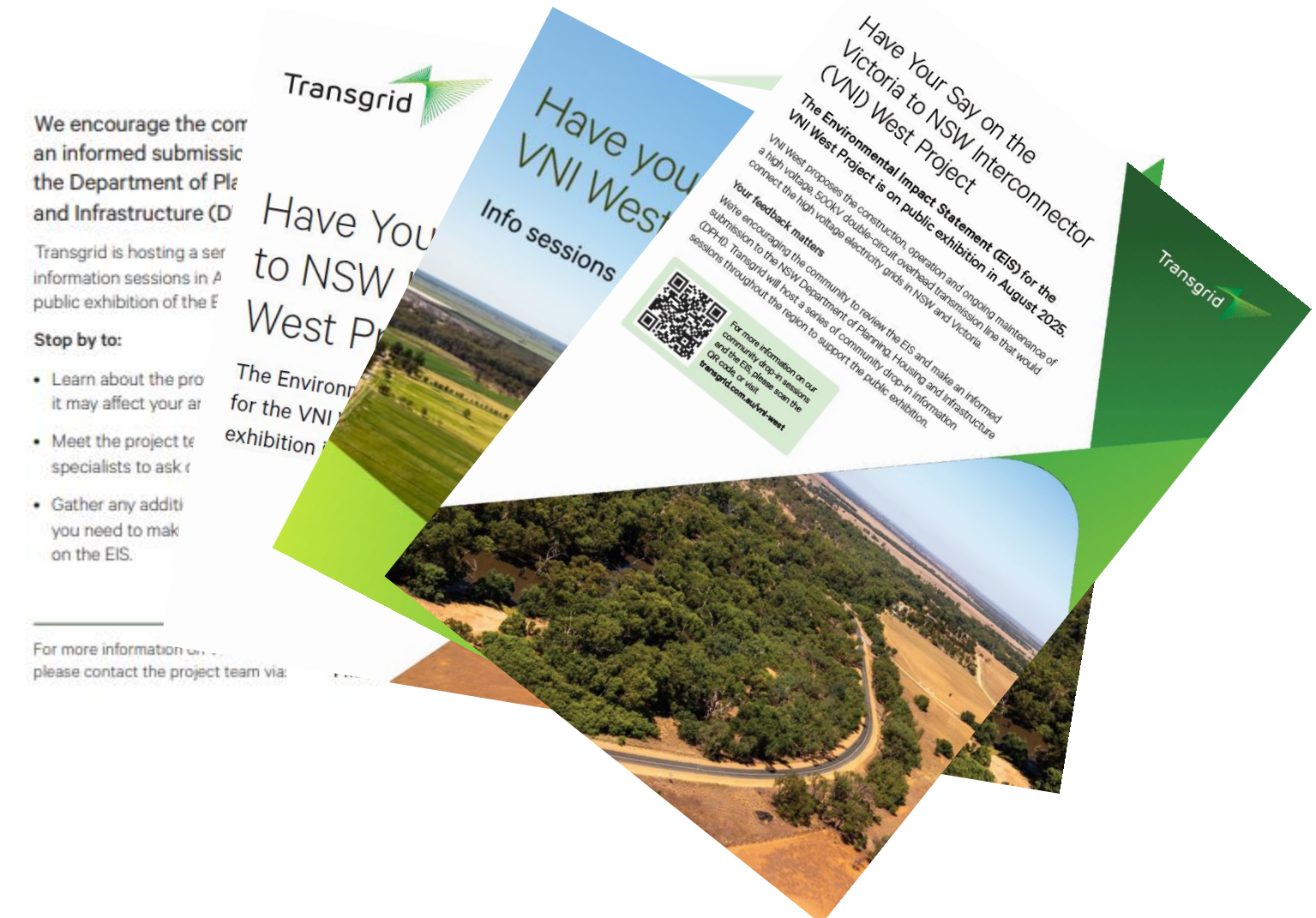


EIS Public Exhibition – Engagement



EIS Public Exhibition - Advertising

- Newspaper advertising
 - 2 x two-week campaigns beginning (04 Aug – 28 Aug)
 - 6 local newspapers
- Email:
 - Email to project updates list (400+ recipients, incl directly affected landowners)
 - Email to CCG members
 - Email to Councils for promotion via local channels
- Social media campaign
 - 2 x two-week campaigns (04 August – 28 August)
- Posters / postcards:
 - Promotional information / QR codes as pointers to information
 - Placed at local shops and community spots along the alignment
- Online information:
 - Website update (progressive)
 - Digital EIS



EIS Public Exhibition – EIS supporting materials

Fact sheets

- 16 fact sheets on EIS and project related topics.

Photomontage booklets

- Containing photos of public viewpoints along the alignment with a photomontage of a transmission line overlayed.

Project maps

- Showing the alignment and location of proposed construction compounds and accommodation camps; and traffic and transport routes

USB cards

- For stakeholder to take home, containing the full EIS document, fact sheets and EIS summary document.

EIS summary document

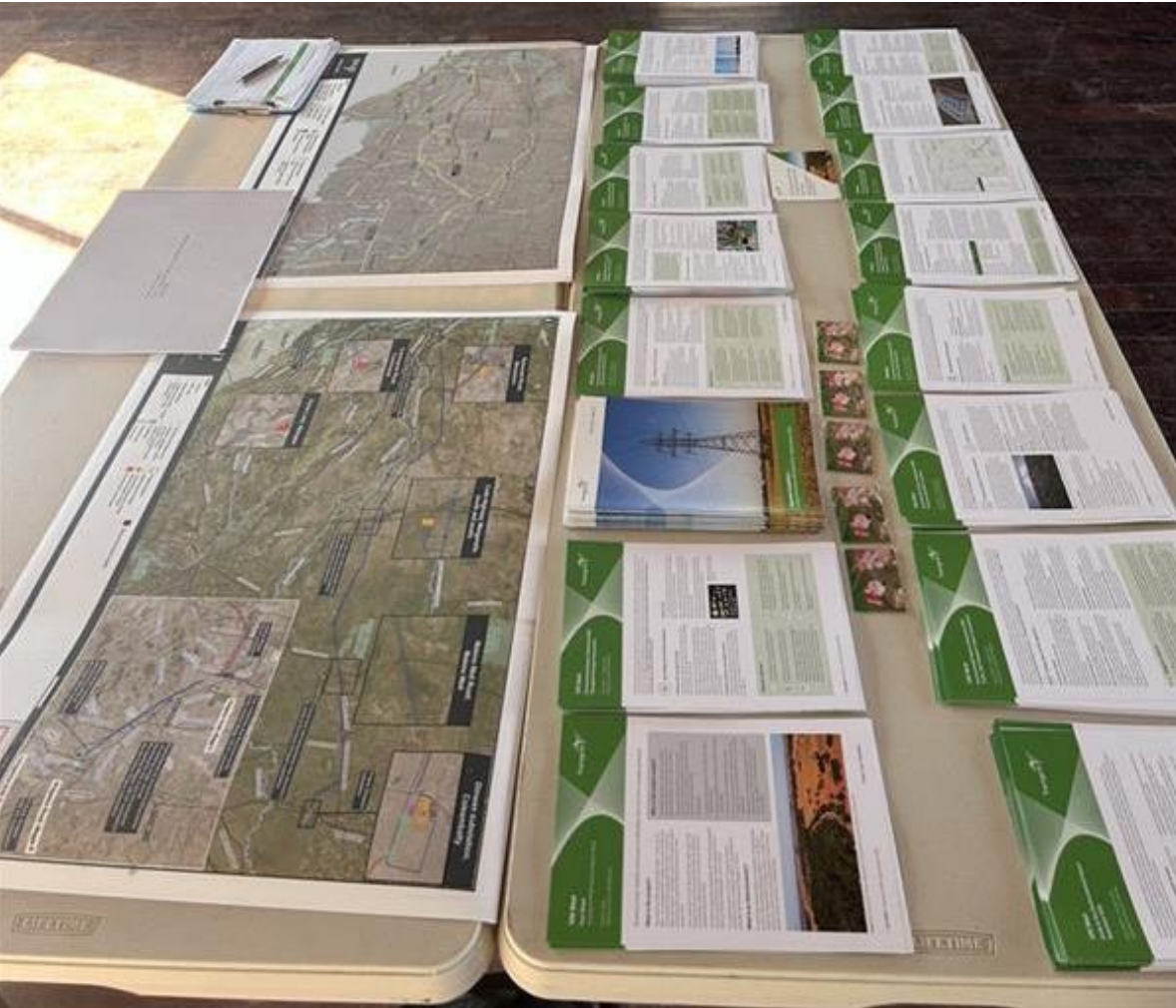
- Printed EIS summary documents for stakeholders to take away.

Digital EIS

- Digital display of digital EIS at community information sessions to demonstrate how the digital EIS can be navigated.

Full EIS document

- Printed copies of the full EIS document at five locations around the region.



EIS Public Exhibition – Community Information Sessions

Throughout August we held 16 community information sessions which included:

- 14 community drop-in sessions across key locations:
 - Barham, Coleambally, Conargo, Deniliquin, Jerilderie, Mallan, Moulamein, Wagga Wagga and Wanganella.
- a session at Deniliquin Lions Market
- a session at Moulamein Football and Netball Club.

Total attendees: 88 people across the 16 sessions.

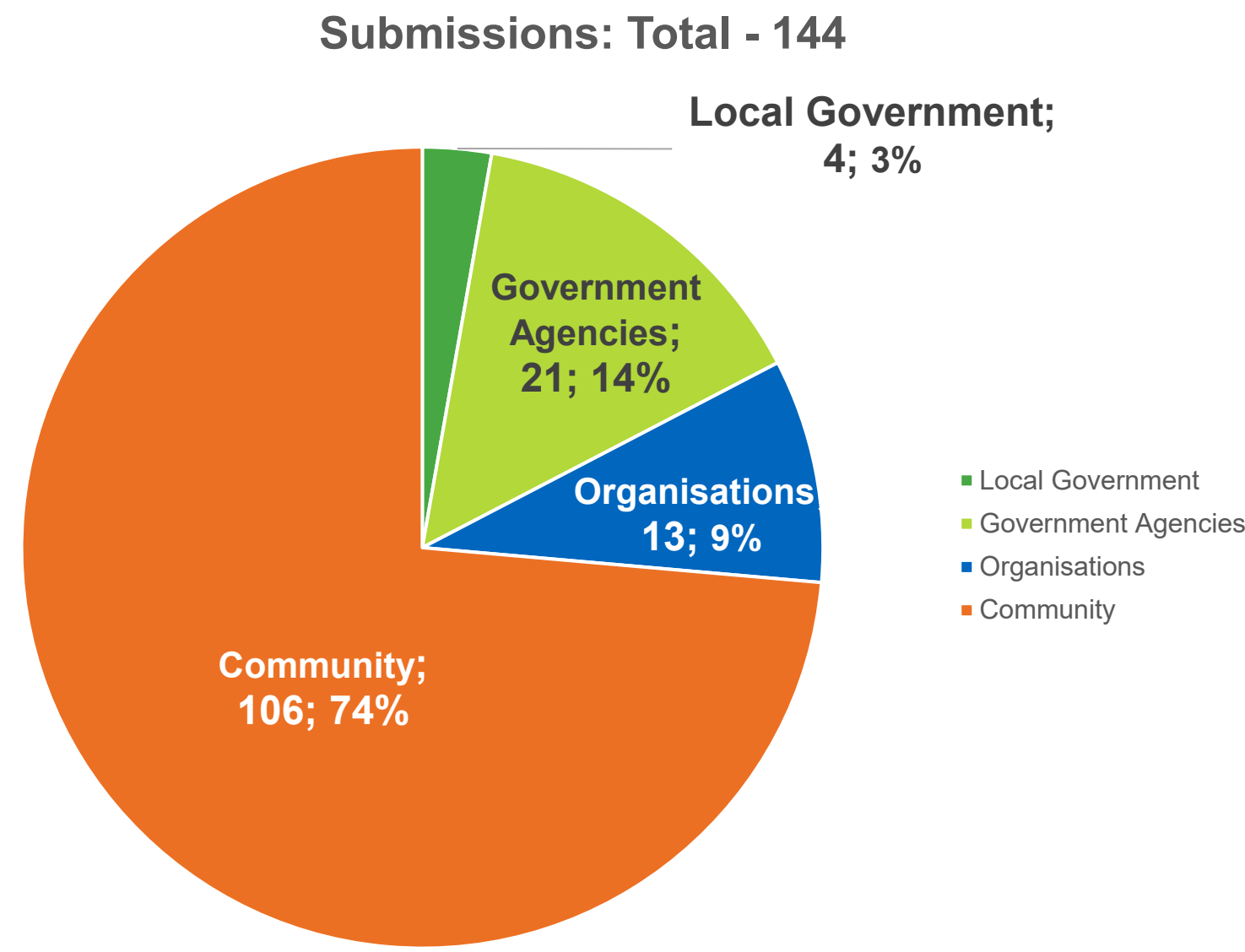


Next Steps:
EIS Submissions summary
Response to Submissions



EIS Public Exhibition – Response to submissions phase

The EIS exhibition period closed on August 29. The NSW Department of Planning, Housing and Infrastructure (DPHI) provided Transgrid with each of the submissions received.



Analysis of responses (community and organisations)

Category	No. of submissions
Supports the proposal	1
Objects to the proposal	113
Comment	5

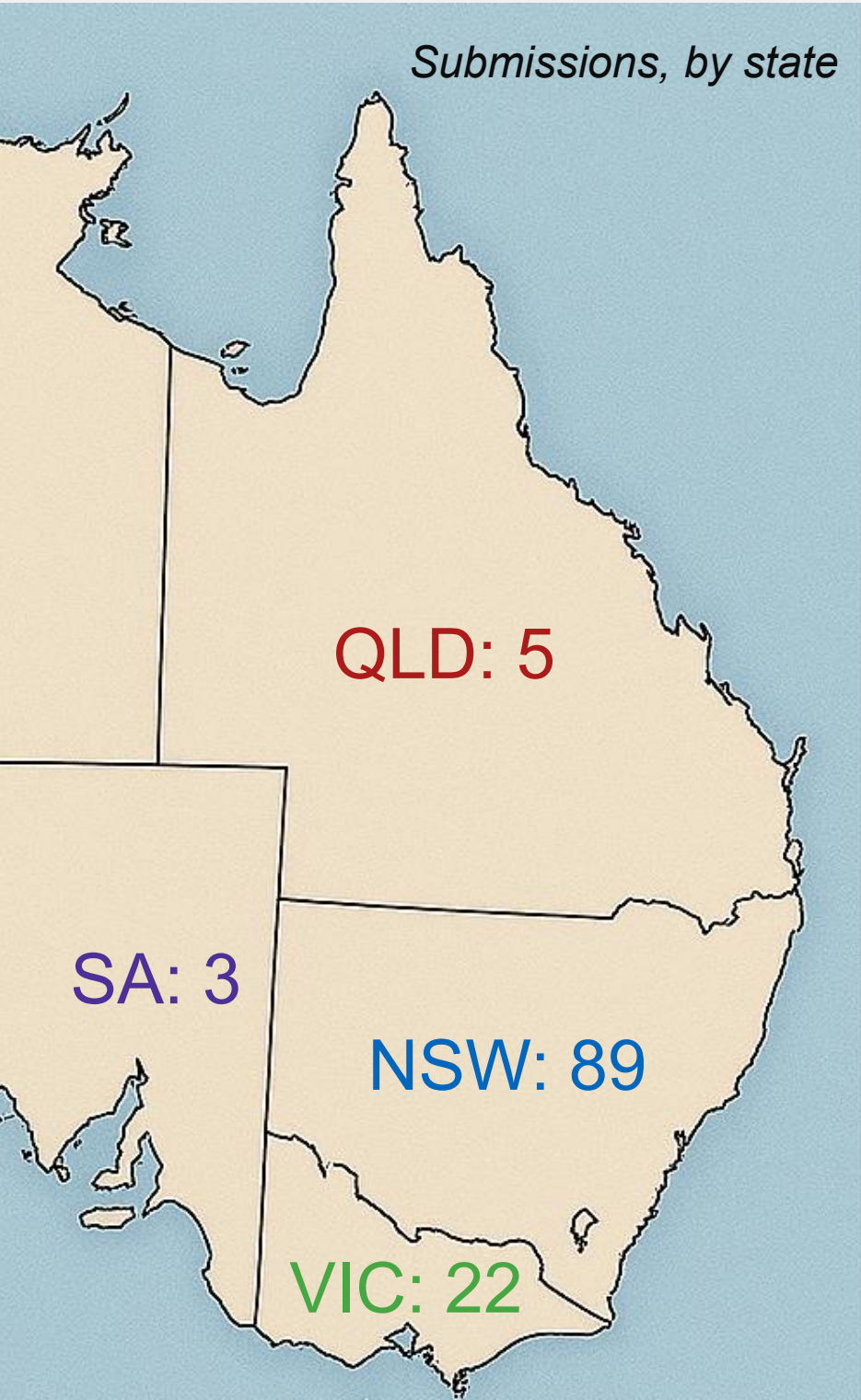
EIS Public Exhibition – Response to submissions phase

Government agency and local council submissions

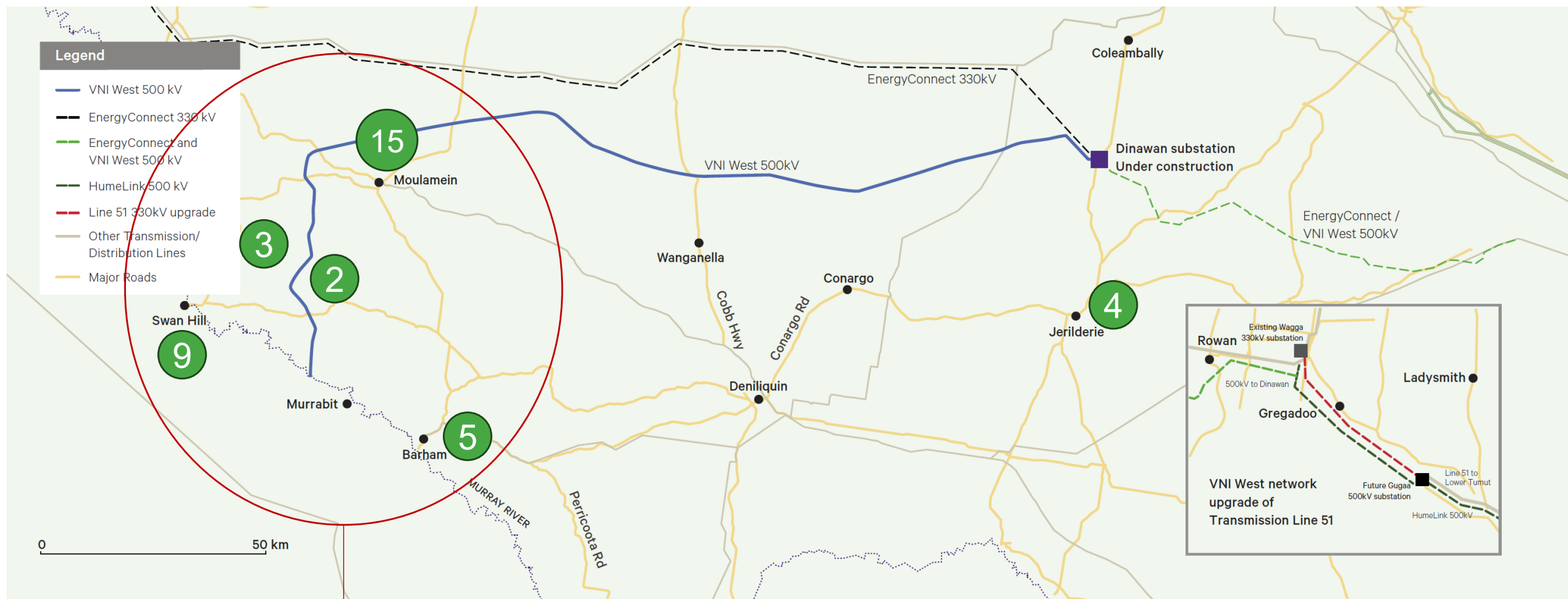
- Airservices Australia
- Civil Aviation Safety Authority
- Coleambally Irrigation Co-operative Limited
- Department of Defence
- Edward River Council
- EnergyCo
- Fire and Rescue NSW
- Heritage Council of NSW
- Heritage NSW
- Murray River Council
- Murray-Darling Basin Authority
- Murrumbidgee Council
- National Parks and Wildlife Services
- NSW Department of Climate Change, Energy, the Environment and Water - Water Group
- NSW Department of Climate Change, Energy, the Environment and Water - Conservation Programs, Heritage and Regulation Group
- NSW Department of Primary Industries and Regional Development - Resources
- NSW Department of Primary Industries and Regional Development - Agriculture
- NSW Department of Primary Industries and Regional Development – Fisheries
- NSW Department of Planning, Housing and Infrastructure – Crown Lands
- NSW Environment Protection Authority
- NSW Rural Fire Service
- NSW State Emergency Service
- Transport for NSW
- Wagga Wagga Council
- Water NSW

Agency Submissions are available
online at DPHI's Major Project
Planning Portal

EIS Public Exhibition – Response to submissions phase



Key locations for submissions



30% of community submissions

Off map

- Coolah – 7 submissions (Central West NSW)
- Hay – 4 submissions

Summary of frequently raised topics - Agencies

Note: items listed below are indicative and subject to ongoing review and categorisation

Impacts on road infrastructure, transport routes, road conditions and traffic management

Oversize/overmass vehicle movements

Impacts of accommodation camps/impacts to existing housing availability

Water supply, water take and licensing (particularly during construction)

Health and safety (particularly: impacts on existing health and medical facilities)

Impacts on biodiversity

Impacts to heritage (particularly: Aboriginal heritage impacts)

Community and economic benefits of the project

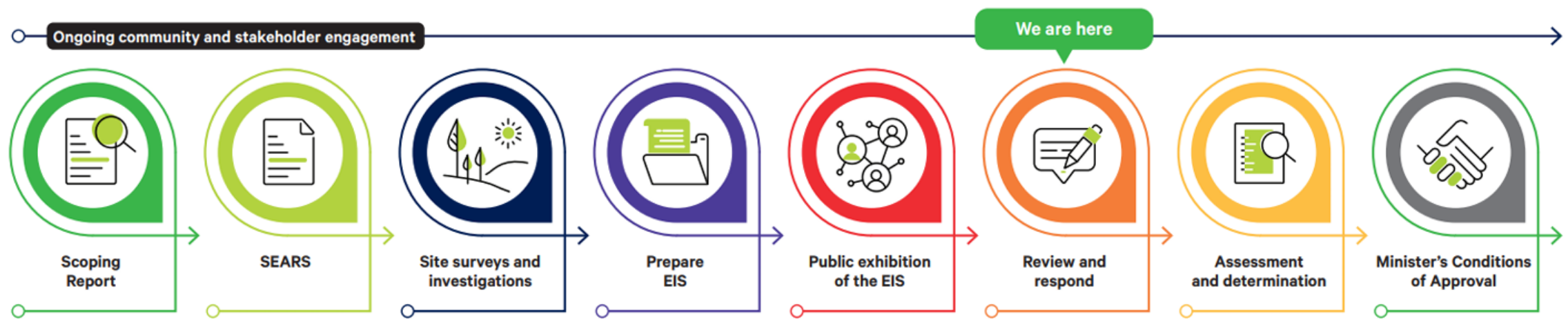
Summary of frequently raised topics - Community

Note: items listed below are indicative and subject to ongoing review and categorisation

Project justification and need	Social and Economic	Biodiversity	Land Use and Agriculture	Community and stakeholder engagement	Project alternatives	Other topics
<ul style="list-style-type: none">• Questioned the overall need for the project• Ability to deliver the project objectives• Net benefits to the electricity network• Perceived lack of 'social licence' for the project	<ul style="list-style-type: none">• Impacts to existing livelihoods• Potential tourism impacts• Questioned the community benefits of the project• Questioned community / local resident wellbeing impacts (noting: community cohesion, health, mental health)	<ul style="list-style-type: none">• Criticism of the impact assessment approach• Concern on impacts to endangered species• Clearing of native vegetation• Impacts to wetland areas• Questioned the approach to offsets	<ul style="list-style-type: none">• Impacts / disruption to agricultural land and production• Impacts to aerial spraying operations• Impacts to biosecurity• Impacts on property value	<ul style="list-style-type: none">• "Lack of consultation"• "Lack of transparency"• "Inadequate consultation"• "Failure to take on board community feedback during the process"	<ul style="list-style-type: none">• Objection to the current project alignment• Objection to the options assessment process undertaken• Requests that the project should be undergrounded	<ul style="list-style-type: none">• <i>Planning and statutory processes</i>• <i>Hazards and risks</i>• <i>Visual amenity and landscape character</i>• <i>Cumulative impacts</i>• <i>Project design and operation</i>• <i>Traffic and Transport</i>• <i>Aboriginal Heritage</i>

Next steps – Preparation of Submissions Report

- All community submissions will be collated and summarised, with responses provided to each category of issue raised.
- Responses will also be provided to each individual government agency and council submission.
- The Submissions Report will be lodged with the DPHI and will be published on the Planning Portal.
- A number of proposed project amendments have been identified as part of the ongoing design refinements, and these will be assessed and report in a separate Amendment Report.
- Aiming for completion of this process mid-2026.
- DPHI will review the reports as part of the project assessment and will make a recommendation to the Minister for Planning and Public Spaces to either approve the project along with any conditions or provide a reason for refusal.



Amendments to the Project

What do we mean by ‘amendment’?

Amendments to the project are also being sought following the public exhibition of the EIS and will require changes to the project description in the EIS.

How will we document amendments?

The revised project will be described in an Amendment Report, which will accompany the preparation of the Submissions Report.

Scope of amendments are currently being finalised, and would likely include:

Changes to project disturbance footprint within project 200m corridor including location changes to towers, brake and winch sites and access tracks.

New construction access tracks outside of project 200m corridor and removal of some existing construction access tracks.

Inclusion of additional substation elements at the Dinawan substation.

Inclusion of additional reactors for Wagga 330kV substation.

Inclusion of a new construction compound at Deniliquin.

Updates to road and intersection improvements and maintenance.

Revise construction staging program.

Wrap up and close



Next meeting

- Next meeting (# 12) on calendar is scheduled for Thursday 4 December 2025
 - However...

Proposal

- # 12: Postpone to March 2026 – Submissions Report expected to be substantially progressed.

Meeting close

Thank you for your time

1800 955 588

vniw@transgrid.com.au

www.transgrid.com.au/vniw