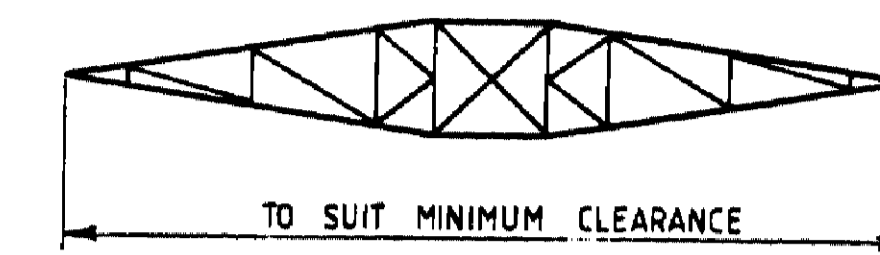
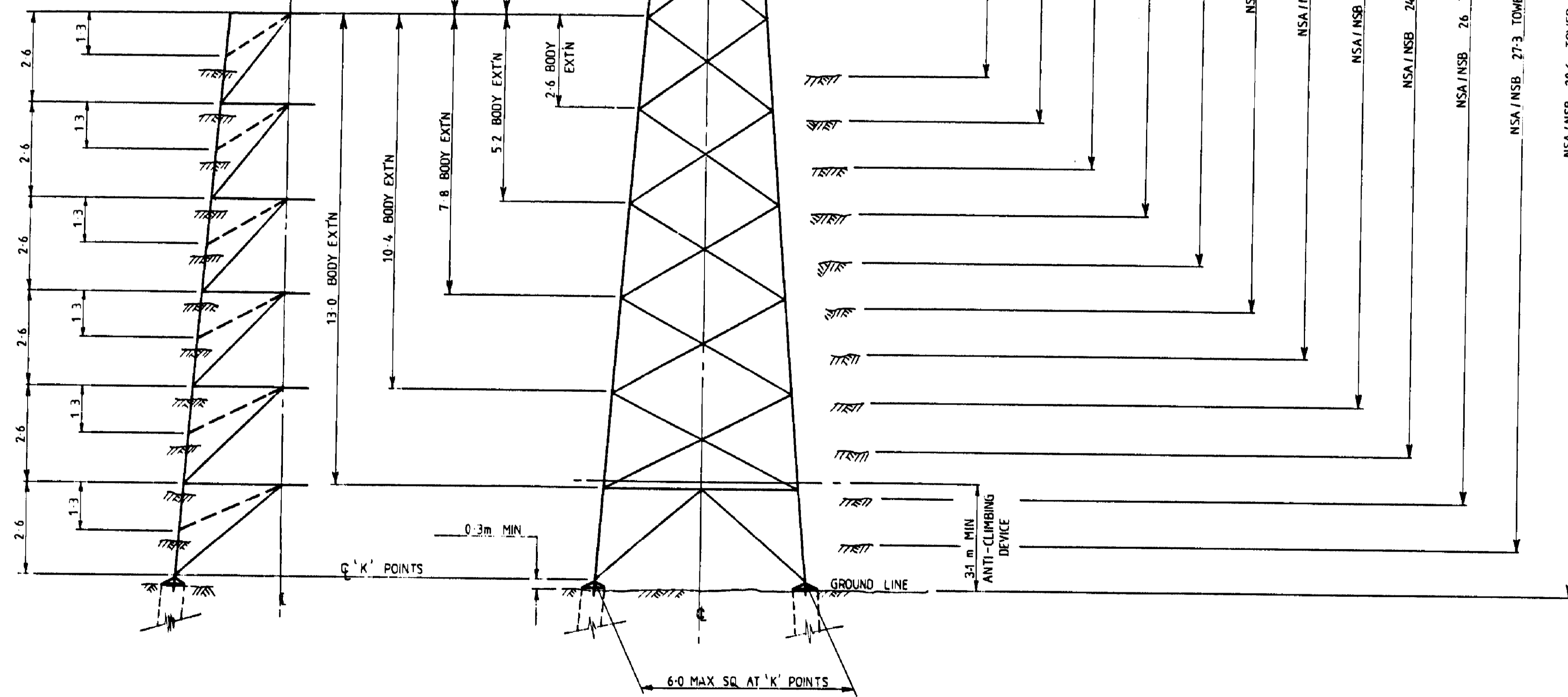


DETAIL OF RIGGING ATTACHMENT POINTS
(SEE NOTE 6)

NOTE: USE PLAN BRACING AT TOP OF ALL LEG EXTENSIONS



SECTION Y-Y

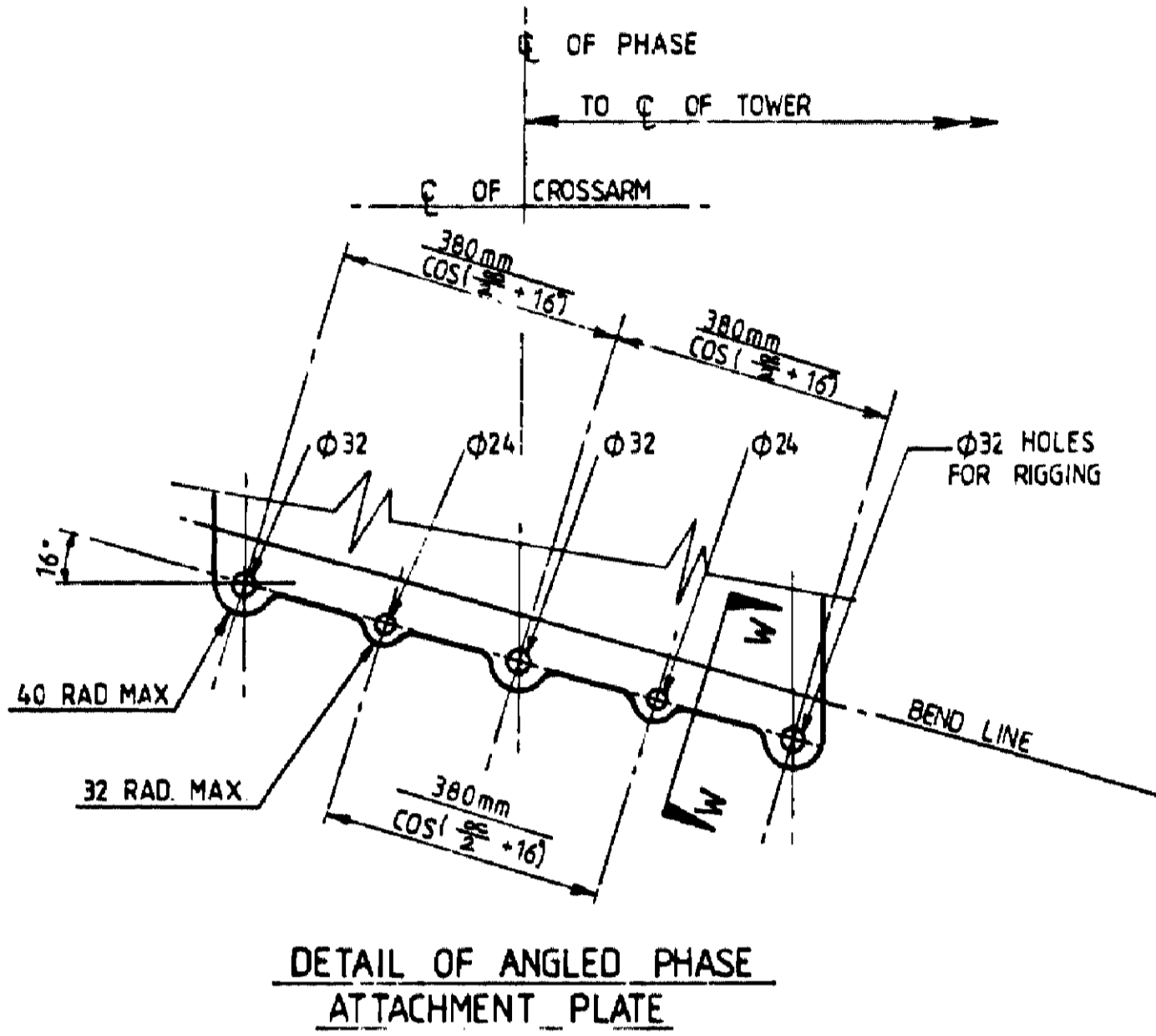
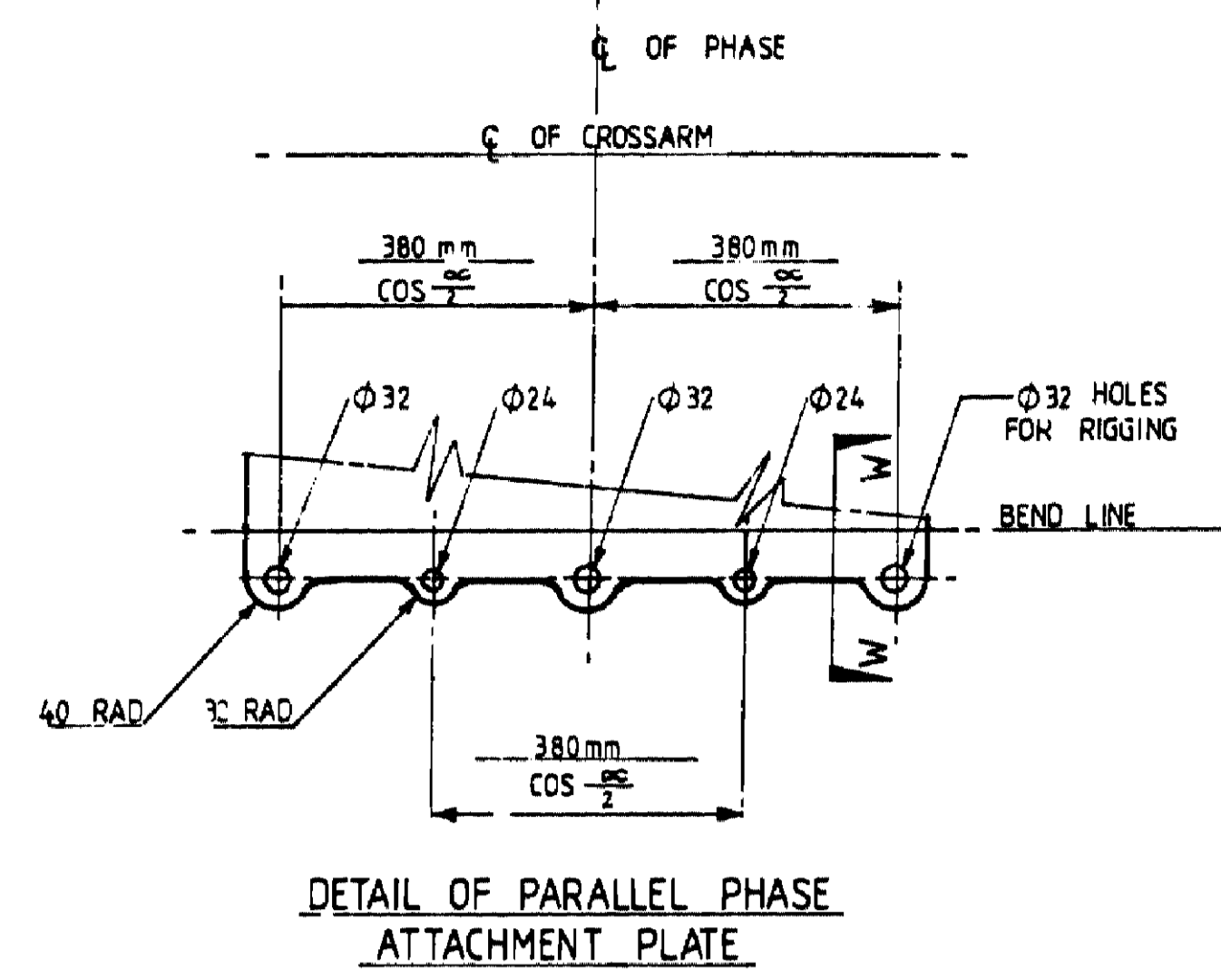
PART VIEW X-X

ALL DIMENSIONS ARE IN METRES UNLESS OTHERWISE SHOWN

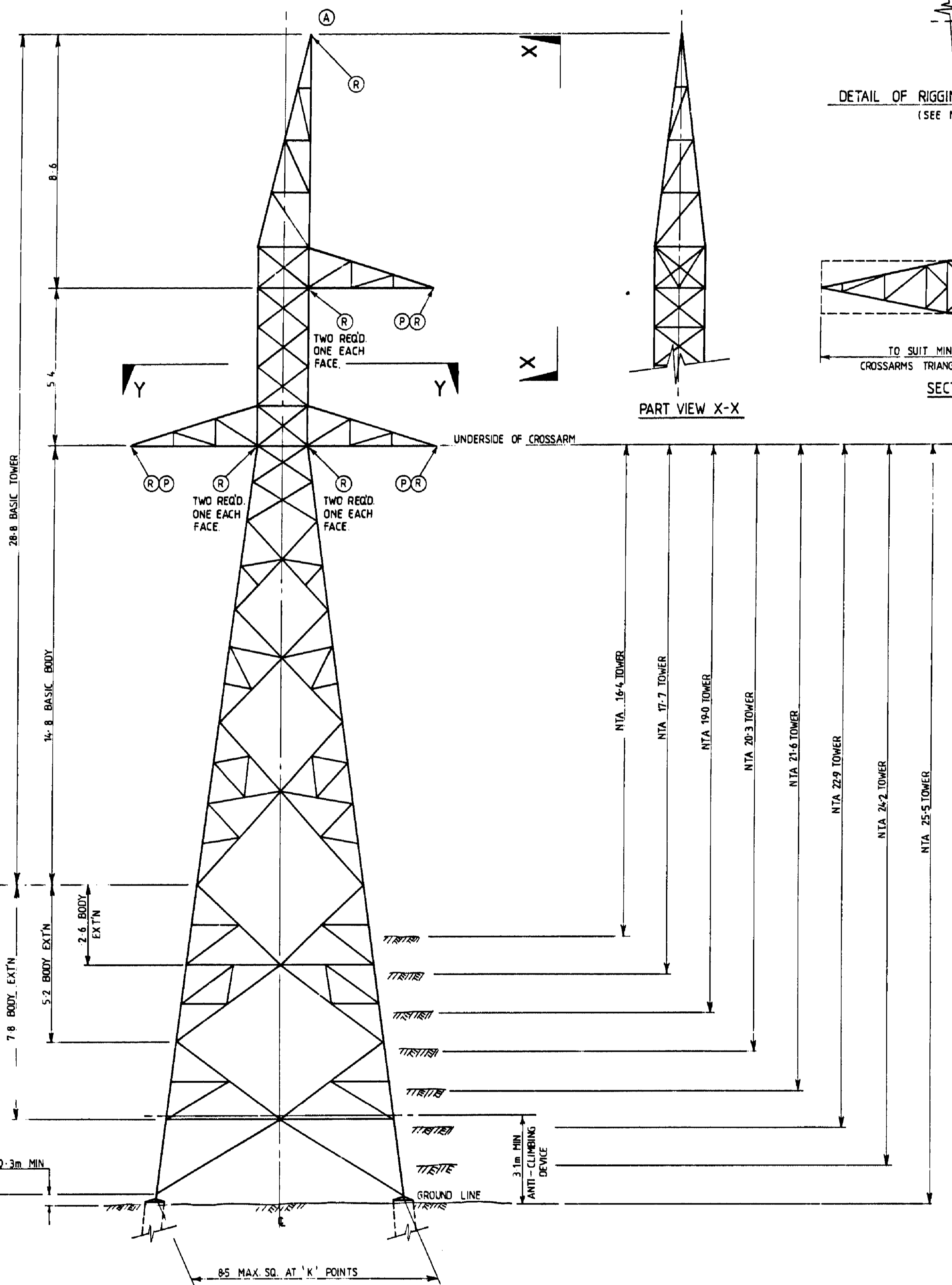
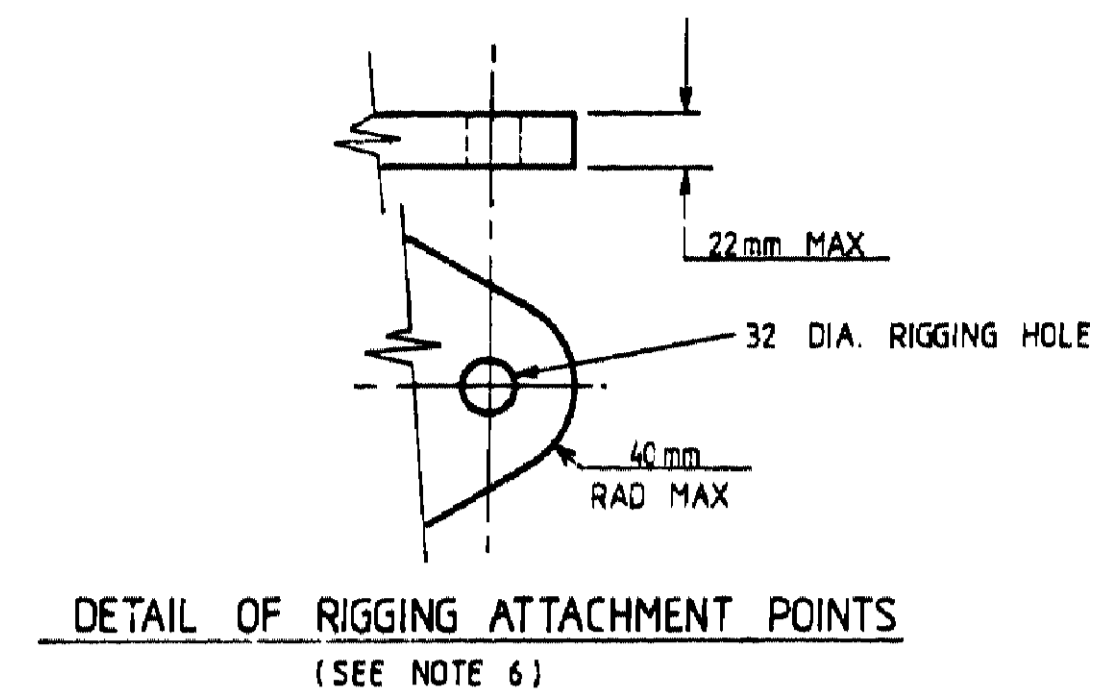
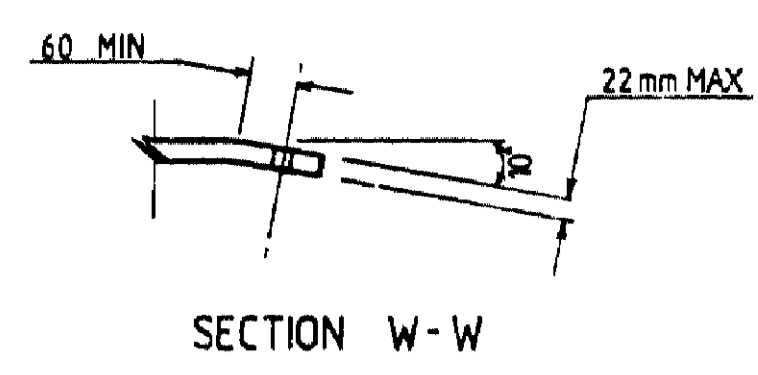
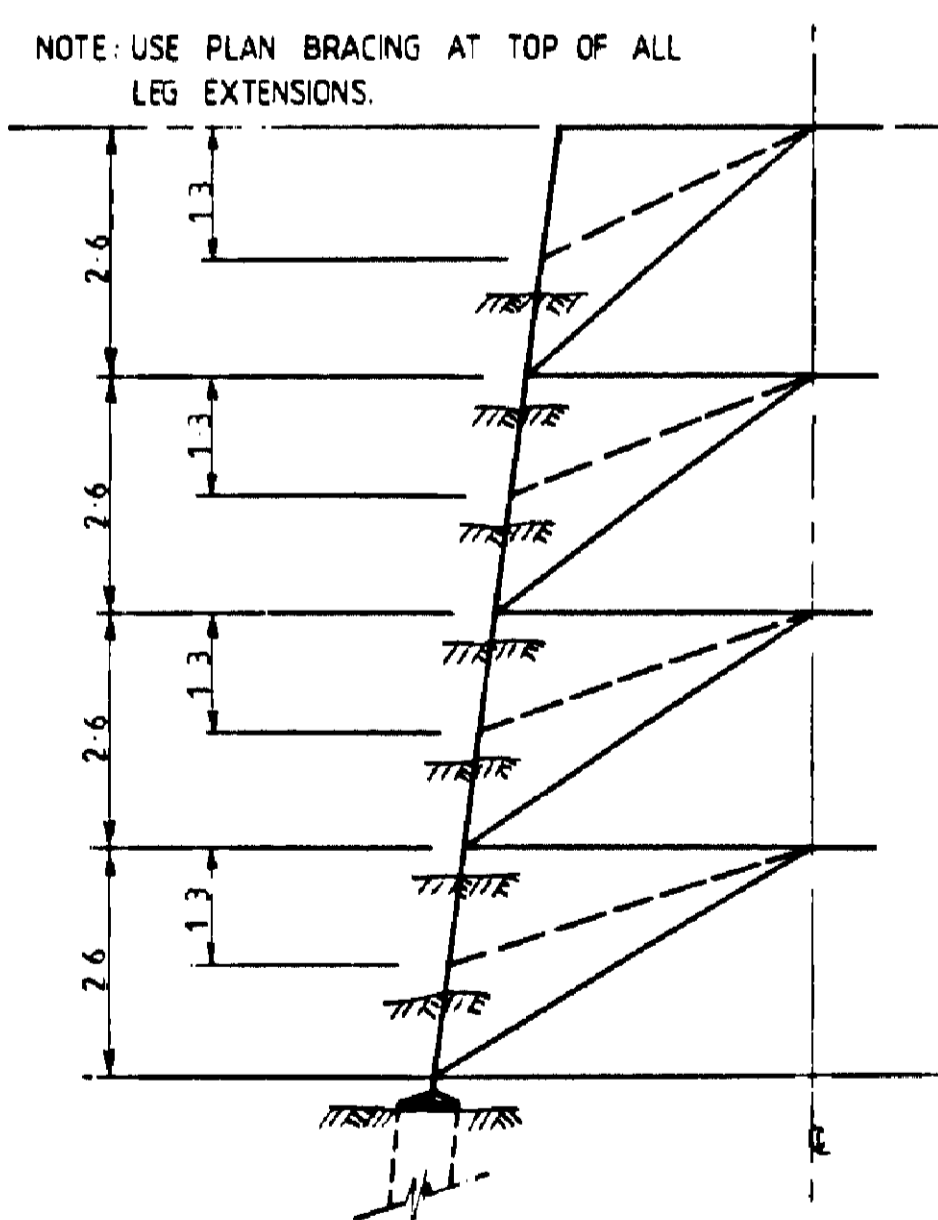
AMENDMENT:



DRAWN	WLI	©TransGrid		
REVIEWED		TRANSMISSION LINES STEEL STRUCTURE - LATTICE - 220kV		
VERIFIED		TYPICAL SINGLE CIRCUIT SUSPENSION TOWER		
APPROVED		TOWER OUTLINES		
FOR INFORMATION ONLY		A1	TL-SK-007	A
SCALE		PREFIX	NUMBER	SHEET
REFERENCE DRAWINGS				AMDT
SUPERSEDES	---	SUPERSEDED BY	---	INDEX CLASS'N
				INCLN



NOTE: USE OF PARALLEL OR ANGLED CONDUCTOR ATTACHMENT PLATES IS OPTIONAL FOR EACH TOWER TYPE BUT COMBINATIONS OF BOTH AT ATTACHMENT POINTS IS NOT ALLOWABLE.



ALL DIMENSIONS ARE IN METRES UNLESS OTHERWISE SHOWN

AMENDMENT:



DRAWN	WLI	©TransGrid		
REVIEWED		TRANSMISSION LINES STEEL STRUCTURE - LATTICE - 220kV		
VERIFIED		TYPICAL SINGLE CIRCUIT TENSION TOWER		
APPROVED		TOWER OUTLINE		
FOR INFORMATION ONLY		A1	TL-SK-008	A
SCALE	REFERENCE DRAWINGS	PREFIX	NUMBER	SHEET
---	---	---	---	---
SUPERSEDES	SUPERSEDED BY	INDEX	CLASS'N	INCLN
---	---	---	---	---