

## Work Notification | August 2025

### Continuing work at Tarcutta

REF: HLW-086

HumeLink is one of Australia's largest energy infrastructure projects connecting renewable energy sources to the grid and helping to put downward pressure on energy prices. The project consists of 365 kilometres of 500 kV overhead transmission lines connecting Wagga Wagga, Bannaby and Maragle and is being delivered in two sections. The section between Wagga Wagga, Maragle and Wondalga is being constructed by UGL Engineering and CPB Contractors, working in joint venture as HumeLink West JV.

### About the work

We are carrying out main construction work in the coming weeks at Tarcutta to build transmission towers and string transmission lines, and continuing work to complete access points and tracks required for use during transmission line construction.

Work activities will be intermittent until project completion in 2027 and will include:

- Excavating with piling rigs and excavators for the tower foundations
- Concrete works for the tower bases, including reinforcement and concrete pours
- Assembling and lifting the towers using cranes
- Stringing of conductors
- Vegetation clearing, excavation and earthwork
- Heavy vehicle movements to transport construction machinery and other deliveries to work sites
- Survey, investigation and monitoring of biodiversity, heritage, noise, dust and vegetation including drone and aerial photography
- Equipment testing and operation.

All work will be carried out in line with the project [Conditions of Approval](#) available on the NSW Government Major Projects website [planningportal.nsw.gov.au/major-projects/projects/humelink](https://planningportal.nsw.gov.au/major-projects/projects/humelink).

### What you can expect

There will be an increased number of construction vehicles and machinery across the project area during construction work. The type of plant and equipment you can expect to see are generators, elevated work platforms, telehandlers, cranes, forklifts, water carts, excavators with attachments, compactors, earth moving equipment, drone cameras, heavy and light vehicles.

We will make every effort to minimise impacts by:

- Minimising the number of machines and vehicles to be used and ensuring all machinery is maintained and serviced
- Turning off machinery and vehicles when not in use and fitting equipment with devices or shielding to minimise noise
- Monitoring dust, noise and vibration to manage any potential impacts and change our work if required.

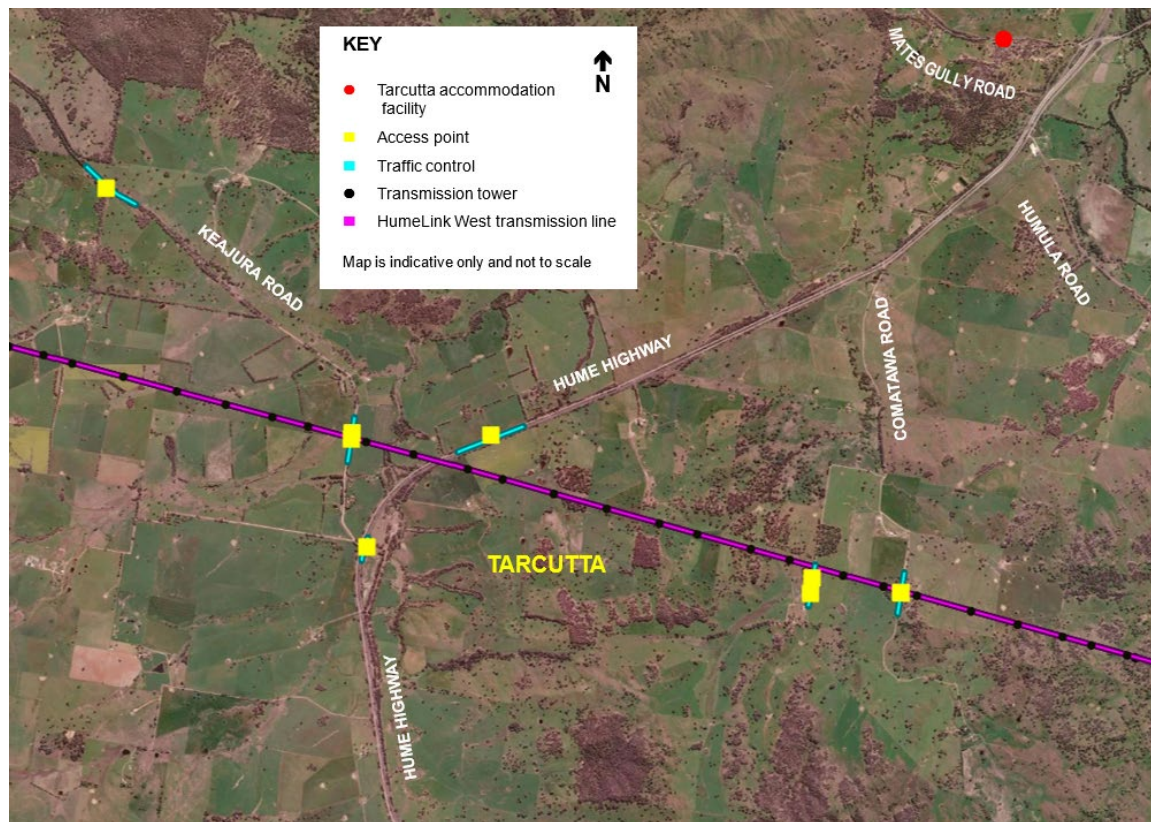
Traffic control will be in place when required, including temporary traffic lights, variable message signs, boom gates, signage, speed reductions and stop/slow traffic management. Please keep to the signposted speed limits, follow the direction of traffic controllers, and drive to the conditions. For the latest traffic updates, visit [livetraffic.com](https://livetraffic.com) or download the app Live Traffic NSW.

### When we are working

Work will take place during standard construction hours of **7am to 6pm, Monday to Friday** and **8am to 1pm on Saturdays**. Out-of-hours work may be in operation at locations where impacted properties and land owners have been separately notified.

## Where we will be working

Work will take place between the access points at Keajura Road, Hume Highway, Comatawa Road, Wilds Road and the transmission line, shown in the map below. See the interactive map for all work locations at [transgrid.com.au/humelink#Project-map](https://transgrid.com.au/humelink#Project-map)



## Keeping you informed

We'll continue to keep you updated about the project and let you know of any work we're planning that might impact you. If you have any questions about the project, please contact our Community and Stakeholder Engagement team on **1800 317 367** or [humelink@transgrid.com.au](mailto:humelink@transgrid.com.au).

We welcome your feedback on the HumeLink West JV Community Communications Strategy. Visit [transgrid.com.au/humelink-west/#Strategies-Plans-and-Programs](https://transgrid.com.au/humelink-west/#Strategies-Plans-and-Programs) to view the strategy, and connect with us to have your say.



### Stay up to date with our work

Please head to [transgrid.com.au/HumeLink](https://transgrid.com.au/HumeLink) or scan the QR code to subscribe to regular updates, and for more information on the project.

## Connect with us

Transgrid is committed to working with landowners and communities through the development of HumeLink. Please connect with us for more information.



1800 317 367 (free call)

[humelink@transgrid.com.au](mailto:humelink@transgrid.com.au)

[www.transgrid.com.au/humelink](https://www.transgrid.com.au/humelink)



For an interpreter, call **131 450** and ask the service to call Transgrid on **1800 317 367**.

**Privacy statement:** Transgrid recognises the importance of privacy and protecting the personal information it holds, uses and discloses in line with the Privacy Act. It is committed to protecting personal information and handling personal information responsibly and in accordance with its obligations.