

Work Notification | September 2025

Continuing work at Ashfords Road and Wagga Wagga substation, Gregadoo

REF: HLW-093

HumeLink is one of Australia's largest energy infrastructure projects connecting renewable energy sources to the grid and helping to put downward pressure on energy prices. The project consists of 365 kilometres of 500 kV overhead transmission lines connecting Wagga Wagga, Bannaby and Maragle and is being delivered in two sections. The section between Wagga Wagga, Maragle and Wondalga is being constructed by UGL Engineering and CPB Contractors, working in joint venture as HumeLink West JV.

About the work

Over the coming weeks we will continue work to widen a 200-metre section of Ashfords Road, Gregadoo, opposite the Wagga Wagga 330 kV Substation. The work will include installing a new concrete hard stand within the substation boundary fence to create an access point and laydown area for vehicles and equipment deliveries. These will be needed during the construction stage of HumeLink to build transmission towers and string transmission lines.

Work to widen Ashfords Road will start from Monday 6 October 2025 and be completed in November 2025.

All work will be carried out in line with the project [Conditions of Approval](#) available on the NSW Government Major Projects website planningportal.nsw.gov.au/major-projects/projects/humelink.

What you can expect

Work will involve sealing the road, installing road paving and new line marking across the 200-metre section of the road outlined in the map over the page. Work activities will include:

- surveying, service and utilities locating
- installing fencing, gates, drainage and signage
- earthwork and concreting
- vegetation clearing
- light landscaping and rehabilitating disturbed areas where required.

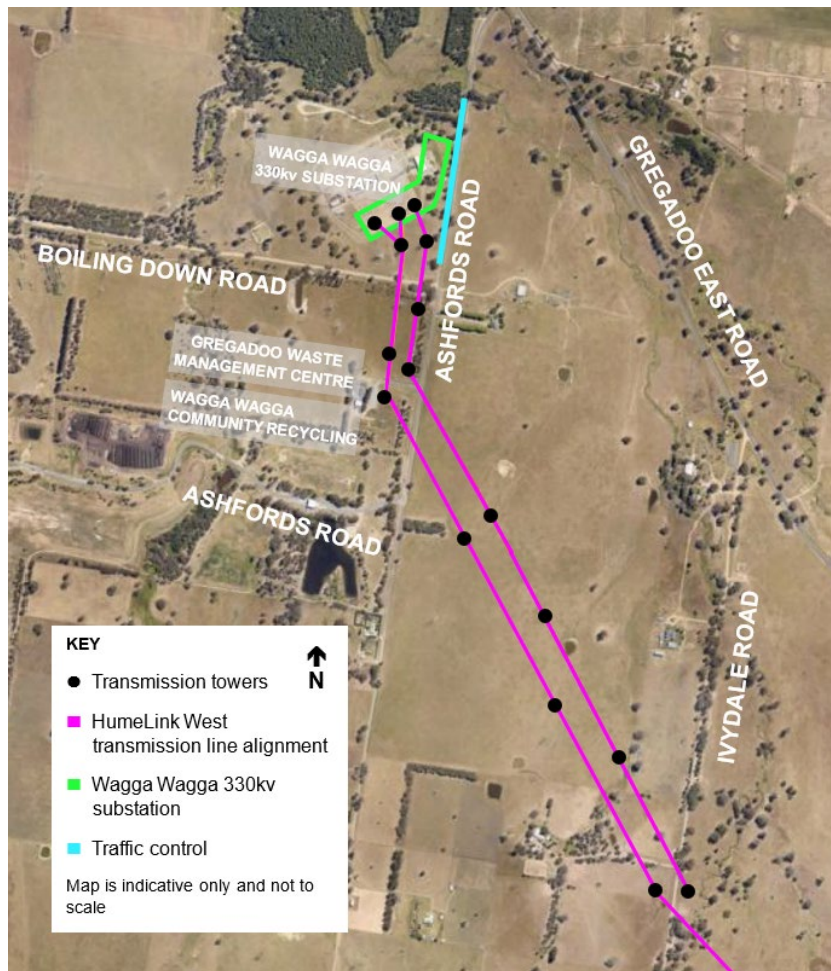
Stop/slow traffic management will be in place, including variable message signs, boom gates, signage and speed reductions. Please keep to the signposted speed limits, follow the direction of traffic controllers, and drive to the conditions. For the latest traffic updates, visit livetraffic.com or download the app Live Traffic NSW.

When we are working

Work will take place from 7am to 6pm Monday to Sunday, including public holidays.

Where we will be working

Work will take place at Ashfords Road, Gregadoo, between Gregadoo East Road and Boiling Down Road, and within the Wagga Wagga substation boundary fence. See the map over the page.



Keeping you informed

We'll continue to keep you updated about the project and let you know of any work we're planning that might impact you. If you would like to receive our work notifications via email, or have any questions or concerns, please contact our Community and Stakeholder Engagement team on 1800 317 367 or humelink@transgrid.com.au.

We welcome your feedback on the HumeLink West JV Community Communications Strategy. Visit transgrid.com.au/humelink-west/#Strategies-Plans-and-Programs to view the strategy, and connect with us to have your say.



Stay up to date with our work

Please head to transgrid.com.au/HumeLink or scan the QR code to subscribe to regular updates, and for more information on the project.

Connect with us

Transgrid is committed to working with landowners and communities through the development of HumeLink. Please connect with us for more information.



1800 317 367 (free call)
humelink@transgrid.com.au www.transgrid.com.au/humelink



For an interpreter, call **131 450** and ask the service to call Transgrid on **1800 317 367**.

Privacy statement: Transgrid recognises the importance of privacy and protecting the personal information it holds, uses and discloses in line with the Privacy Act. It is committed to protecting personal information and handling personal information responsibly and in accordance with its obligations.