

ENERGYCONNECT

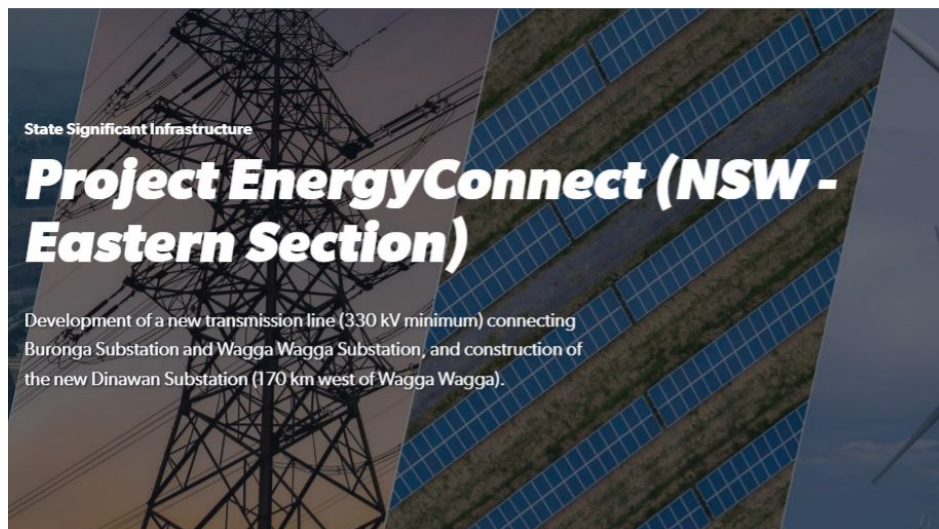
# Newsletter

---

## September 2022

Welcome to the September EnergyConnect newsletter. In this edition:

- Eastern stage of EnergyConnect approved
- Project construction accelerates in the West
- Investing millions in regional NSW communities
- Supporting safer cycling in Wagga Wagga
- Helping improve local waterways
- Keep up to date on construction



## Eastern stage of EnergyConnect approved

Transgrid has welcomed the NSW Government's final environmental approval for the Eastern Section of the nation's biggest transmission project, EnergyConnect. The Government completed a thorough review of the Environmental Impact Statement for the 540km eastern section of the project.

[Learn more](#)



## Project construction accelerates in the west

Work is well underway on construction of a 30-hectare workers camp near Buronga as part of EnergyConnect. The camp and laydown with office facilities will accommodate up to 340 workers. It will support construction of the new transmission line west to the South Australian border and the expansion of the Buronga substation complex.

[Learn more](#)



## Investing millions in regional NSW communities

EnergyConnect is investing millions of dollars with local suppliers in regional NSW. It is currently awarding procurement packages along the project alignment from Wentworth to Wagga Wagga following the start of construction on the \$1.8 billion interconnector.

[Learn more](#)



## Support for safer cycling in Wagga Wagga

Transgrid's Community Partnerships Program provides grants to not-for-profit groups in communities where our assets are located or under development. As part of EnergyConnect, Transgrid provided a grant to the Wagga Wagga Cycling Club to help purchase medical gear including first aid kits, snake bite kits and a defibrillator.

[Learn more](#)



## Helping improve local waterways

As part of EnergyConnect, Transgrid provided a grant to the Wagga Wagga chapter of OzFish. It was used to buy specialist equipment to assist with the mapping of Tarcutta Creek, east of the city, to improve fish habitats. We strive to provide lasting benefits to customers and communities in areas where we operate with grants of up to \$5000.

[Learn more](#)





## Keep up to date on construction

Stay up to date with EnergyConnect construction notifications for your area by visiting the EnergyConnect project portal of our principal construction partner SecureEnergy Joint Venture.

[Learn more](#)

---

### Connect with us

1800 49 06 66 (free call)

[pec@transgrid.com.au](mailto:pec@transgrid.com.au)

[transgrid.com.au/energyconnect](https://transgrid.com.au/energyconnect)

