

ENERGYCONNECT

# Newsletter



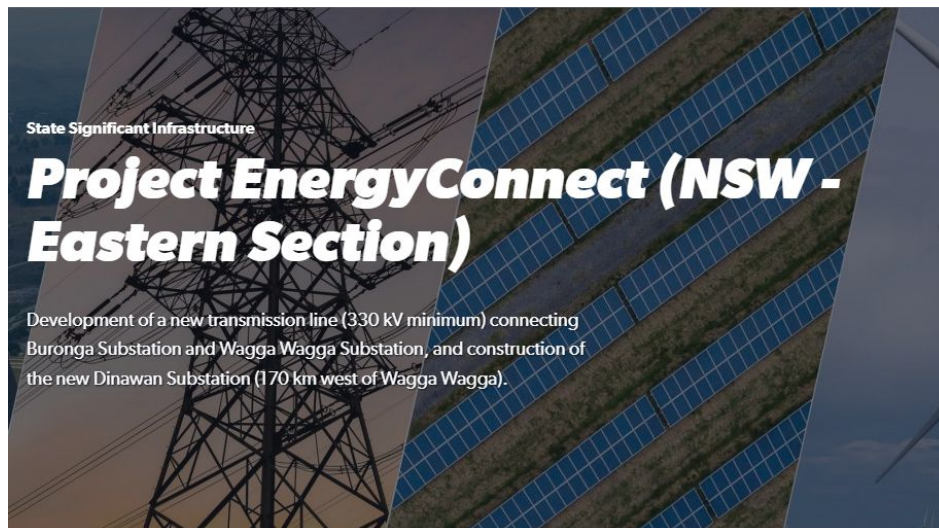
---

## February 2022

Welcome to the February EnergyConnect newsletter. In this edition:

---

- NSW-Eastern Section update
- Community drop-in sessions
- EnergyConnect breaks ground in SA
- Hundreds of businesses register for work
- Energise your career
- Rare species discovered
- Conserving the environment
- Cultural heritage works in Wentworth area
- SecureEnergy project update



## NSW-Eastern Section update

The public exhibition and submission period for the Environmental Impact Statement (EIS) for EnergyConnect's NSW-Eastern Section has closed.

All feedback received by the Department of Planning and Environment is now being summarised in a submissions report, which will be made publicly available.

Subject to receiving all necessary approvals, construction of the project's NSW-Eastern Section is anticipated to commence in late 2022.

[Learn more](#)



## Community drop-in sessions

A big thank you to everyone who came along to our community drop-in sessions to talk about the EIS for EnergyConnect's NSW-Eastern section.

The team enjoyed being able to meet with the community face-to-face again, visiting Wagga Wagga, Lockhart, Urana, Coleambally, Hay, Booroorban, Moulamein, Balranald and Buronga.

[Learn more](#)



## EnergyConnect breaks ground in SA

Our project partner ElectraNet has commenced construction on the South Australian section of EnergyConnect.

More than 200km of new transmission line will be constructed between Robertstown and the NSW border in addition to substation upgrades.

[Learn more](#)



## Hundreds of businesses register for work

Did you know more than 820 individual businesses have already registered to become prequalified for work opportunities on EnergyConnect?

[Learn more](#)



## Energise your career

Jobseekers will have the chance to connect with us and EnergyConnect principal contractor SecureEnergy when we showcase career opportunities in the energy sector at the upcoming Wagga Wagga Jobs Fair.

The event is being held on Friday 25 February at Kyeamba Smith Hall, Wagga Wagga Showgrounds, from 10am-3pm.

[Register here](#)





## Rare species discovered

We've made an important discovery during biodiversity studies for EnergyConnect. Ecologists have found the largest known population of the critically endangered Desert Hopbush plant.

[Learn more](#)



## Conserving the environment

As part of EnergyConnect, we're working to protect the environment by purchasing private land to create new conservation areas.

[Learn more](#)

---

## Cultural heritage works in Wentworth area

SecureEnergy has partnered with Registered Aboriginal Parties and archaeologists to undertake test excavations in the Wentworth area.

The team is focused on collecting any Indigenous archaeological artefacts of significance in the construction footprint and ensuring they are curated safely until they can be relocated after construction.

This work is an important part of respecting our Aboriginal Cultural Heritage duty of care obligations.



## SecureEnergy project update

- Geotechnical investigation works on the EnergyConnect NSW-Western Section continued during February. This activity will provide the information required to complete detailed site design and earthworks.
- We have been using a drone to monitor and capture vegetation pathways along the transmission corridor alignment to help develop a Project Vegetation Management Plan.
- Ecological surveys commence in late February to capture additional data on the construction corridor. The work includes identifying hollows for the siting of nest boxes for fauna that may be displaced by construction.
- Road Dilapidation Surveys of the haul routes to be used during the project will commence late February/early March. These surveys provide a record of pre-construction road conditions using a vehicle-mounted camera.

---

### Connect with us

1800 49 06 66 (free call)

[pec@transgrid.com.au](mailto:pec@transgrid.com.au)

[transgrid.com.au/energyconnect](https://transgrid.com.au/energyconnect)



People. Power. Possibilities.

---