

VNI West Community Consultative Group

**Meeting 10 – 03 July 2025
Wanganella**

Acknowledgement of Country

We would like to acknowledge the Wiradjuri, Wamba Wamba, Perrepa Perrepa and Yorta Yorta people as the custodians of the lands and waters on which we meet today.

We pay respect to Elders past and present.



Agenda

Time	Agenda item	Time allocated	Presenter
9:45 – 10:00	Morning tea	15 mins	
10:00 – 10:15	Welcome <ul style="list-style-type: none">Acknowledgement of CountryIntroductionsHousekeeping and review of previous minutes	15 mins	Brendan Blakeley
10:15 – 11:15	What are you hearing?	60 Mins	Brendan Blakeley
11:15 – 11:35	Project Director's update <ul style="list-style-type: none">Property updateEnvironment updateCommunity benefits update	50 mins	Colin Mayer
11:35 – 12:35	EIS orientation and overview	60 mins	Jarryd Barton / Geoff Hudson
12:35 – 12:50	EIS exhibition schedule	15 mins	Nathan Menser
12:50 - 1:00pm	Wrap up and close	10 Mins	Brendan Blakeley

Review of Meeting 09

Minutes and action items



Action items

Agenda item	Description	Responsible	Status
1. Welcome	ACTION: Stakeholder engagement heat map	Nathan Menser	Slide 6
	ACTION: Firefighting training video	Transgrid	Not yet public [on notice]
	ACTION: Details on insurance implications for landowners (from previous meeting)	Secretary	Emailed / closed
	ACTION: Copy of Slides from Meeting 02 re: firefighting	Secretary	Emailed / closed
	QoN: Are compensation assessments extended to aerial businesses?	Ben Doran	Response
	ACTION: Update on Indigenous involvement in Social Impact Assessment	Geoff Hudson	Response
	ACTION: Send Landscape Character & Visual Assessment guidelines to CCG	Secretary	Emailed / closed
	ACTION: Refined photomontages; live examples from project	Transgrid	Slide 7
	Comment: Biodiversity offsets	Geoff Hudson	Response
2. What are you hearing?	QoN: Does the removal of vegetation on the easement change the carbon status applied to the easement?	Geoff Hudson	Response
3. Project Update	ACTION: WMLIG to share details with Transgrid on hairy nose wombat translocation	Roger Knight	
	QoN: Water usage: Will there be restrictions on irrigators during peak water use?	Geoff Hudson	Response
	ACTION: Provide overview / recap of CCG activities	Nathan Menser	Slide 10

Action items

Stakeholder mapping

Group	Stakeholders (abbreviated for space)
Project approval authority	DPHI, DCCEEW
Government (Elected Officials - Federal)	Bowen, Ley, Davey, McCormack
Government (Elected Officials – State)	Sharpe, Dalton, McGirr
Government (Agencies – Federal)	AEIC, DAFF
Government (Agencies – State)	DCCEEW, EPA, EnergyCo, TfNSW, RFS, WaterNSW, CBC
Local councils	Murrumbidgee, Edward River, Murray River, Wagga Wagga
Local services and utilities	Essential Energy, Telstra, Optus, Vodafone, Starlink
Renewable Energy Developers	Origin Energy, Spark Renewables, RES Group
Community	Landholders, Community groups, Environmental groups, businesses, NSW Farmers, RDA
Traditional Owners and other Aboriginal Groups	LALCs, Yarkuwa, Mutthi Mutthi, Wamba Wamba, and more; plus 43 individual RAPs
Consumer representatives and advocacy groups	TAC, EWON, ICN
Energy regulator / operator	AEMO, AER, TCV
Media	Local media outlets, Social media

Photomontage

Recap of last meeting

5. Edward River: Views southwest towards the river crossing



Photomontage detail - cropped to about 50mm focal length

Photomontage

EnergyConnect field photos



Photomontage

EnergyConnect field photos



Recap on CCG activity

Recap:

Meeting 1:

Priorities

- Protection of TSRs
- Preservation of cultural and environmental values
- Concern for health impact and bushfire risk
- Minimise disruption to rice farming and agricultural assets
- Transparency in planning processes and access to public submissions
- Understanding the EIS process

Future topics for presentation

Bushfire risk and mitigation

Social legacy

Property restrictions

Community engagement process

Smaller airstrips and corridor-level constraints

Discussion

- Corridor adjustments: avoid Moulamein, minimise water crossings
- Enhancing community engagement
- Inputs to update route selection criteria for corridor assessment
- Biodiversity offsets
- Meeting minutes

Attendance

13 of 16 members attended.

9 Transgrid representatives – 4 of whom are in the room today.

Recap on CCG activity

General:

Route issues: Corridor and route refinement process; inputs into Transgrid process; concerns for VNI West in Victoria and overall project justification; biodiversity; cultural heritage.

Social Legacy opportunities: Roads, telecommunications, bushfire management, biodiversity, housing, long-term services, equitable spend across alignment, cross-Council coordination

Engagement: influence on engagement locations; appreciation of community sentiment and 'mentality barometer'

Landholder insight: Compensation clarity, financial / tax implications, fairness in negotiations, management on-property; landholder uncertainty during route selection; succession planning.

Cumulative impact: Calling out interfaces between VNI West, EnergyCo South West REZ, Renewable projects; the need for coordinated government support.

Understanding the EIS: Technical report sessions at CCG Meetings 07 & 08.

What are you hearing?

Brendan Blakeley



Project update

Colin Mayer



Project update



Image showing EnergyConnect's work at Dinawan



Substation package:

Request for Tender on Substation and network upgrade (Line 51) work to be issued to market mid-July 2025.

EIS development:

SEARs consistency assessment in progress;

Official lodgement of 24 July 2025.

EIS Exhibition:

August 2025
(details later in slide pack)

Land access:

First in-principle agreement for land access secured.

Transmission Company Victoria

VNI West in Victoria

On Monday 30 June 2025, TCV announced an updated construction timeline, resulting in a delay of two years, to November 2030.

According to TCV, this updated timeline reflects “revised planning, design and construction assumptions”, allowing “more time for detailed environmental, geotechnical and cultural assessments, along with more meaningful landholder engagement on access and easement arrangements”.

TCV has also launched a Land Easement and Access Package (LEAP) to be delivered to directly affected landholders along the proposed corridor.

This LEAP is an equivalent to combining Transgrid’s Consent to Enter Access agreement, the Section 10A Option Deed and Property Management Plan.

Regarding a two-year delay in Victoria, Transgrid remains committed to completing the environmental approvals and property negotiations required for project planning under the NSW EIS approvals framework, and is working to identify a prudent and efficient solution to deliver the full interconnection transmission with Victoria.



TRANSMISSION
COMPANY
VICTORIA

30/06/2025

MEDIA RELEASE

VNI West updated construction timeline coincides with release of new Land Easement and Access Package

Updated VNI West construction timeline shared with landholders

Transmission Company Victoria (TCV) has today advised landholders that the expected completion date for the VNI West transmission project is shifting from 2028 to late 2030.

TCV Spokesperson, Claire Cass, said the updated timeline reflects revised planning, design and construction assumptions for one of Victoria's most significant energy infrastructure projects.

"The new construction completion target allows more time for detailed environmental, geotechnical and cultural assessments, along with more meaningful landholder engagement on access and easement arrangements," Ms Cass said.

"We know this updated timeline may be frustrating, but we're committed to working with landholders respectfully and providing the support they need to consider what is best for them, their properties, and farming or business operations.

"While the timeline has shifted, the critical purpose of VNI West remains the same - to deliver the infrastructure needed to keep Victoria's lights on and help put downward pressure on electricity prices," she said.

Land Easement and Access Package Delivery

The timeline update coincides with the upcoming release of the VNI West Land Easement and Access Package, which will be delivered directly to landholders along the proposed corridor.

From today, Landholder Liaisons will begin contacting landholders in the project easement to arrange in-person discussions and to personally deliver the package. Support will be tailored to meet each landholder's needs — whether that's help reviewing the package in detail, or advice on accessing independent professional advice.

Property update



Property Update

- **All formal Offer Letters** issued to directly affected landowners:
 - February / March 2025: Dinawan to NSW/VIC Border (Section 10A)
 - **July 2025:** Line 51 (Wagga) – letter issued under commercial terms, as Transgrid will work within an existing easement on property.
- **Negotiations** commenced in accordance with the *Just Terms Act*.
- **Landholders are generally engaged** across the project.
- Transgrid can advise it is **receiving advisory on valuations from landowner's representatives**. Transgrid covers reasonable fees for landholders in seeking legal and valuation advice.



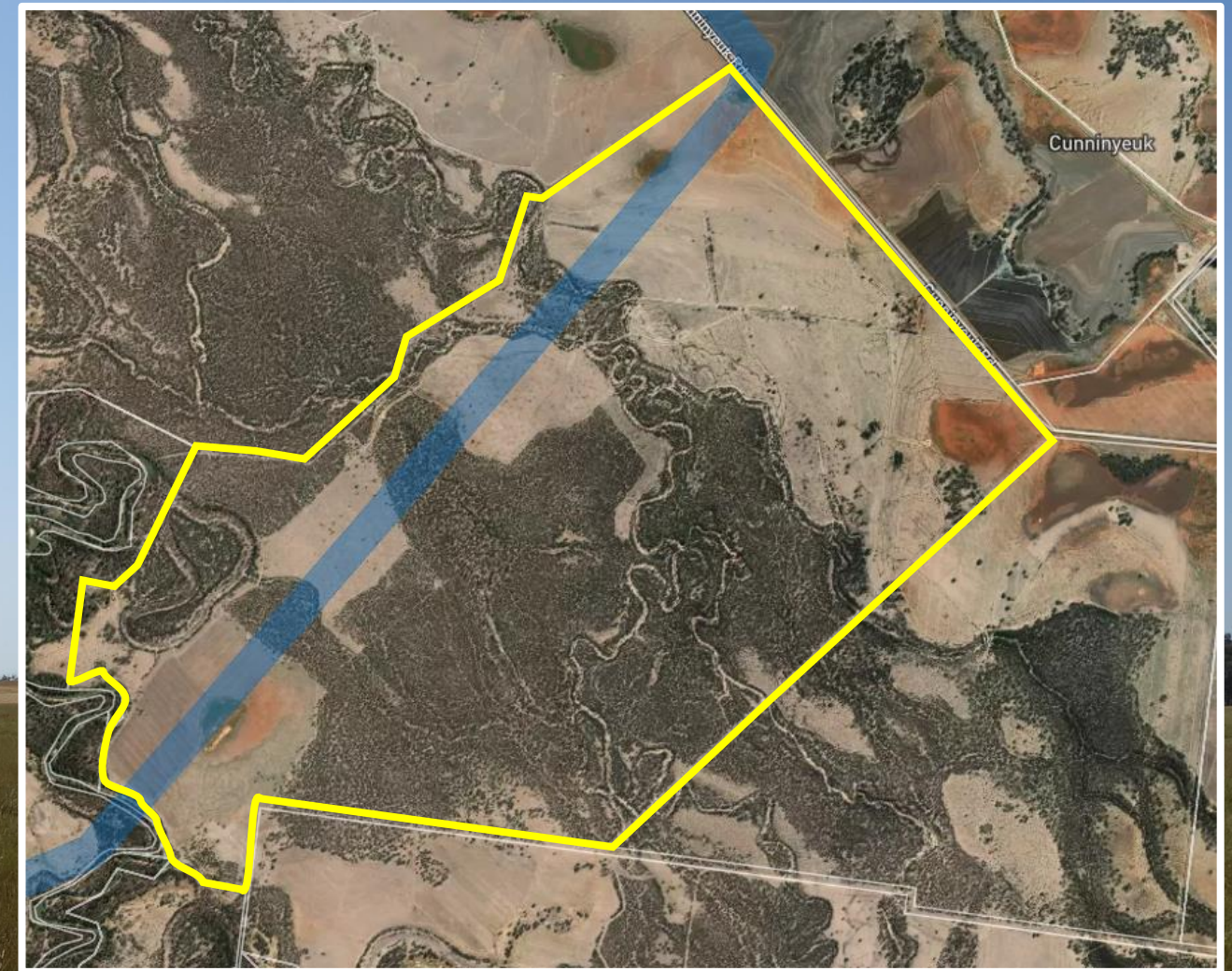
Environment update



Biodiversity: Farm Management EOI

Concord property

- A number of Indigenous businesses / Registered Aboriginal Parties have provided tender documentation for farm management (Indigenous Land Management).
- Transgrid is assessing these tenders.



Community investment and benefits update



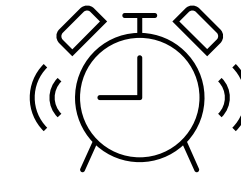
EOI initiatives received and potentials

EOIs received to date:

- Mallan Hall Refurbishment
- Country University Centre (Deniliquin & Finley)
- Ironbark Workforce Development Initiative
- Deniliquin LALC youth program

Regional initiatives being investigated:

- Telecommunications / weather monitoring & fire detection systems.
- Road infrastructure upgrades.
- Community energy projects and micro-grids.
- Legacy housing.
- Local workforce development & training.



**EOIs
close
31 July**

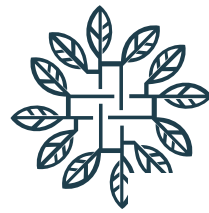
Industry engagement

Collaboration with EnergyCo and SW REZ Generators + NSW Dept Primary Industries & Regional Development

1. Mapping funding timelines and target communities / locations;
2. Lining up community engagement activities to reduce consultation fatigue;
3. Working together on social legacy initiatives.



EnergyCo



SOMEVA
RENEWABLES



BayWa r.e.

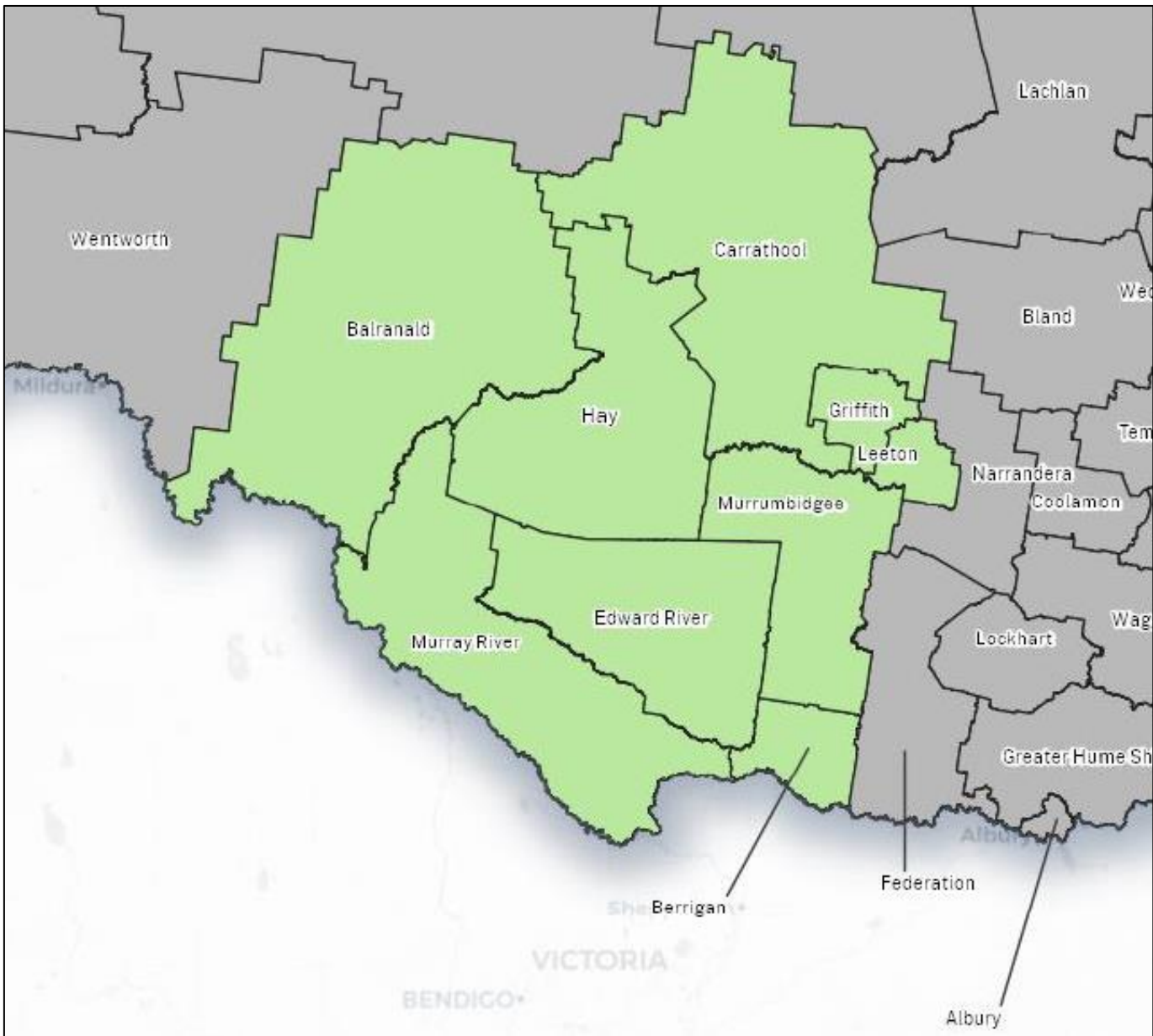
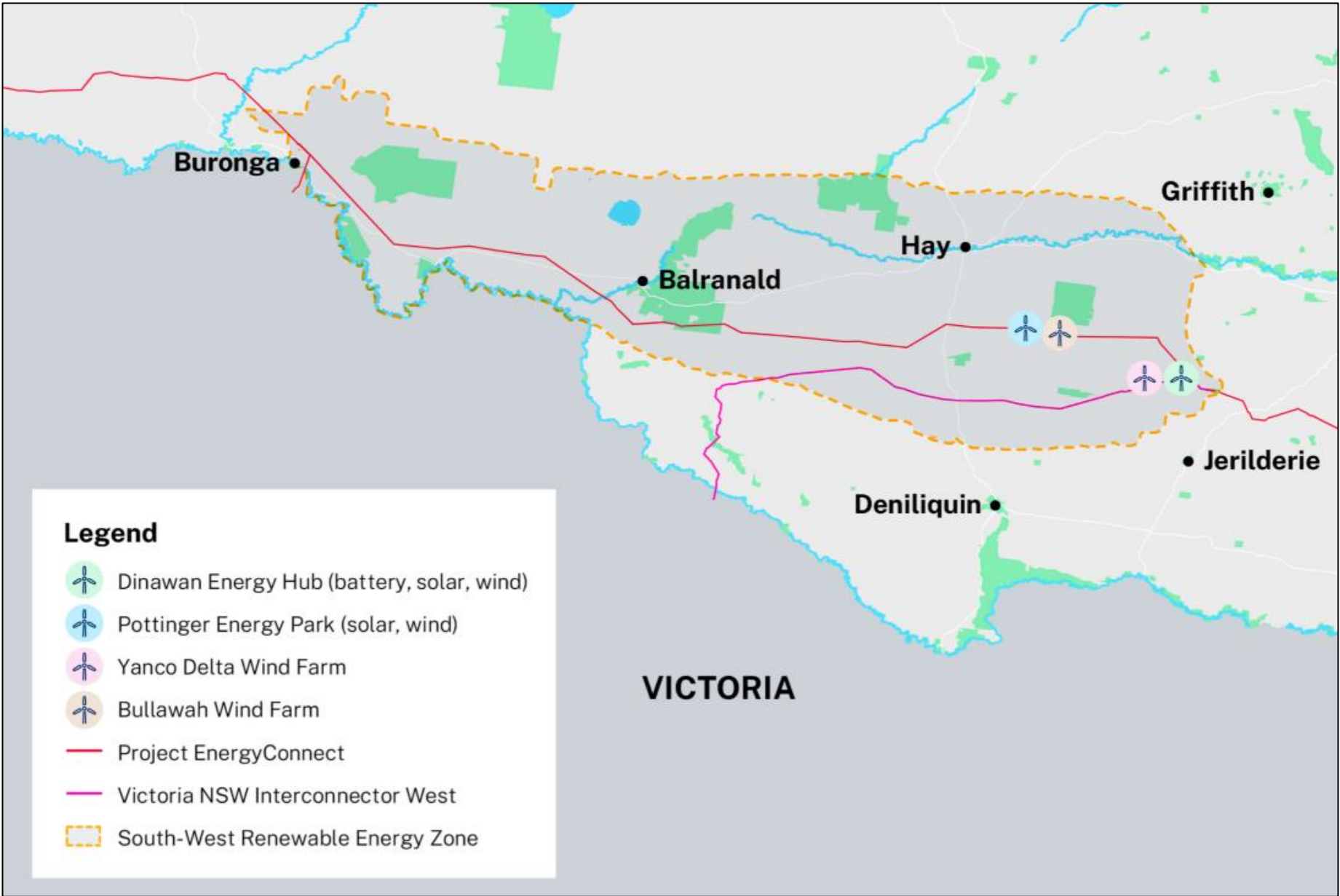


Department of Primary Industries and Regional Development

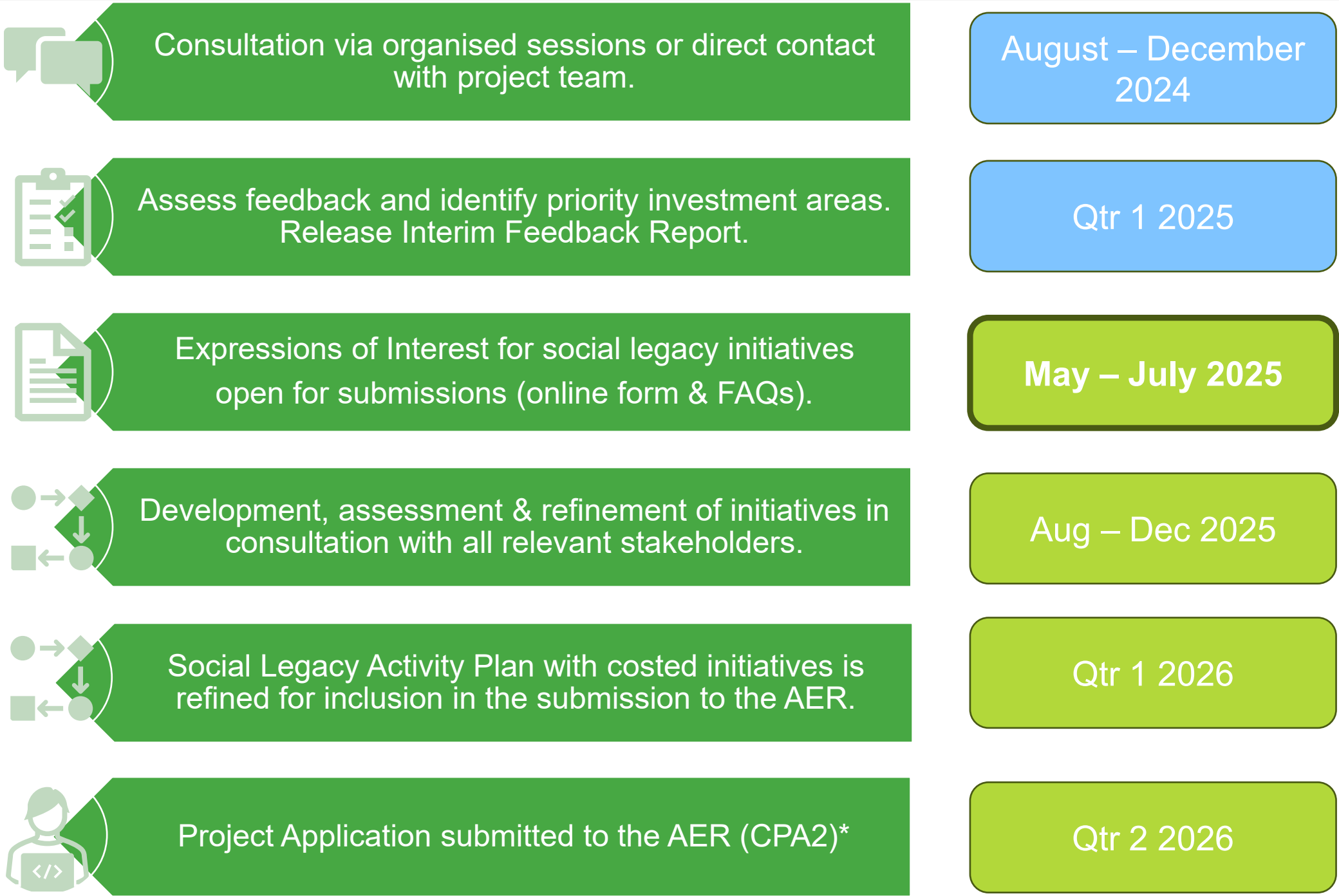
NSW Sustainable
Communities Program



Geography & investment regions



Community benefits & investment submission timeline



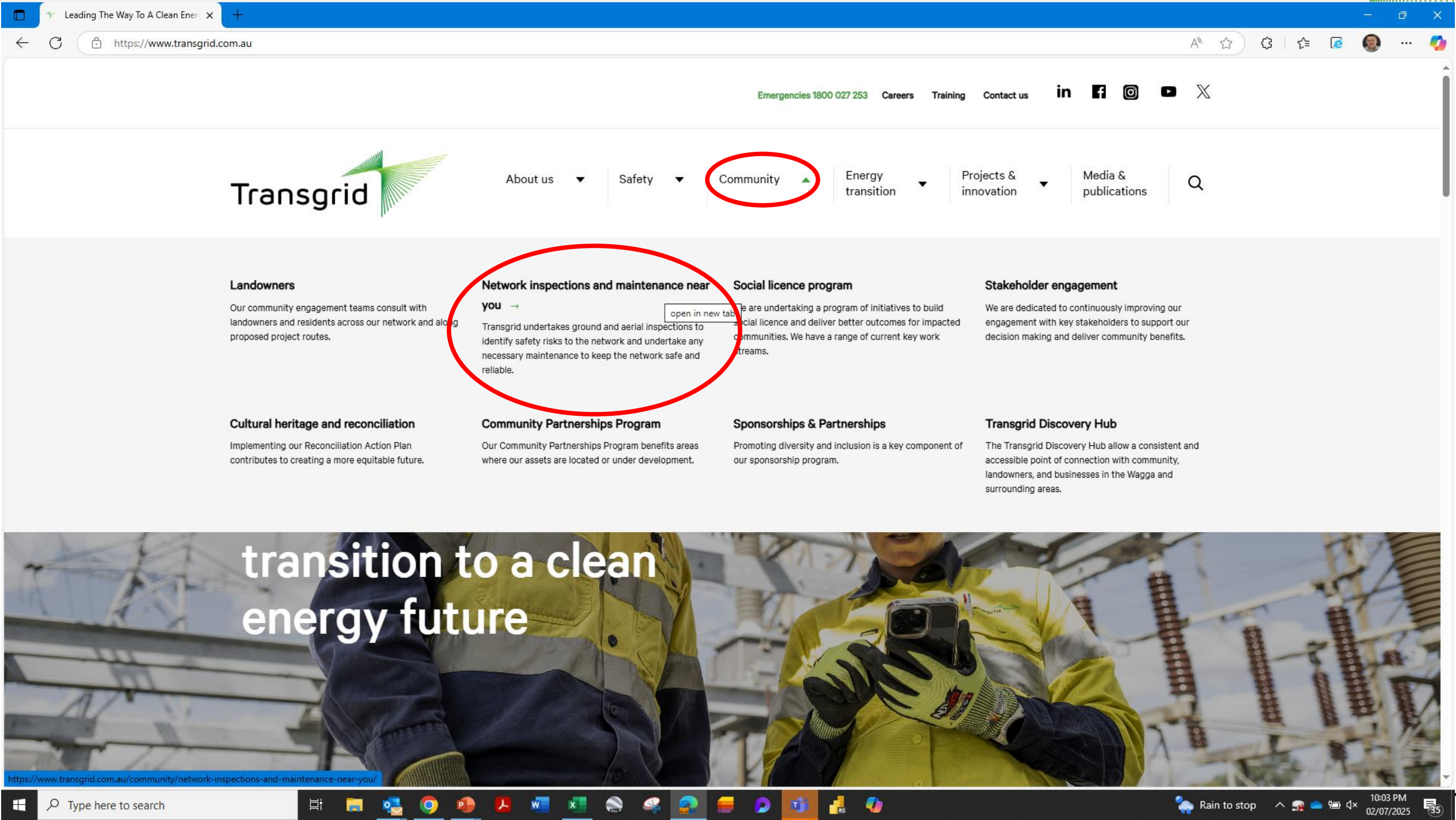
**Indicative time for a decision by the AER is 6 months.*

Community information



Transgrid website – Community section – Network inspections

<https://www.transgrid.com.au/community/network-inspections-and-maintenance-near-you/>



Aerial (helicopter) inspections

the Wire home

Settings

Network inspections and maintenance

https://www.transgrid.com.au/community/network-inspections-and-maintenance-near-you/

Contact us

Network inspections and maintenance

Helicopter Patrols

Drone inspections

Flying uncrewed aerial vehicles

Update your contact details

News

Helicopter Patrols

Transgrid has launched its 2025 bushfire prevention program, which includes helicopter inspections and 3D laser scanning.

Between May and September 2025, specialist helicopter crews will inspect transmission lines across the state, including the regions below.

Scheduled flights are shown in aqua blue below and drone inspections are shown in yellow. You can zoom in and click on each line to find out the date we will be flying that line.

You can also type your address in the search bar of the map to find out if a flight is planned near your property.

✓ Helicopter Flights [Click line for dates]

✓ Drone Inspections

✓ Transmission Lines

✓ Bing Hybrid

+

Search for a location...

Addresses

GIS Cloud

Line

99L

Status

Flight scheduled

From

COLEAMBALLY 132KV

To

DENILIQUIN 132KV

Flight date(s)

04/07/2025

Note

*Weather depending, dates may be

^ Back to Top

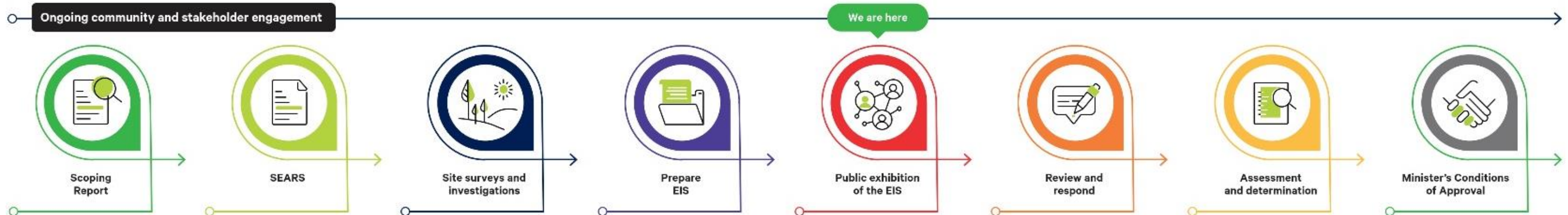
transgrid

Official

EIS orientation and overview

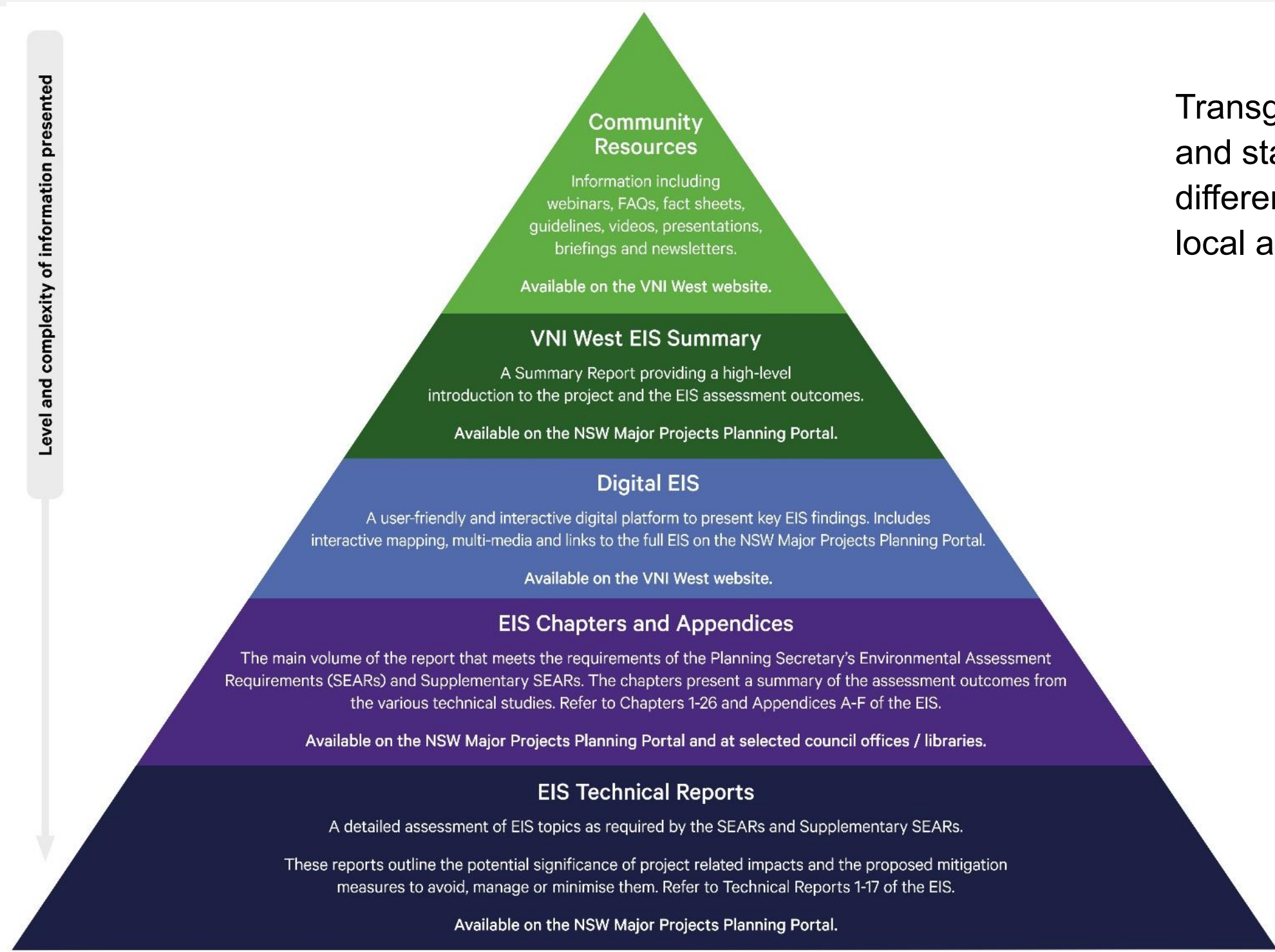
Purpose of the EIS

Environmental Planning Approvals Pathway



- The purpose of the EIS is to help members of the community, interested stakeholders, government agencies, and relevant authorities understand the potential impacts.
- Assist the community and stakeholders to make an informed submission on the merits of the project.
- The EIS addresses the potential environmental impacts of the VNI West project in New South Wales (VNI West (NSW)). It:
 - details the potential impact of the project through a main report and supporting specialist studies
 - outlines proposed management measures to avoid, minimise or manage the potential impacts identified

EIS: Types of information available



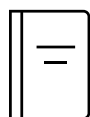
Transgrid understands community members and stakeholders will be interested in different aspects of the EIS relating to their local area or individual circumstances.

Contents of the EIS

- The EIS is structured into three main parts supported by a series of appendices
- The chapters present a summary of the assessment outcomes from the various technical papers.
- 18 detailed technical papers. The technical papers provide a detailed assessment of EIS topics including the potential significance of the project, related impacts and the proposed mitigation measures to avoid, manage or minimise them.

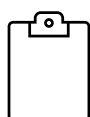
Part A – Project and need	Appendices
1 Introduction	A SEARs compliance table
2 Strategic context, need and project development	B Project maps
3 Project description	C Options report
4 Statutory context	D Statutory compliance
5 Stakeholder and community engagement	E Community consultation outcomes report
	F Summary mitigation measures
Part B – Environmental impact assessment	Technical papers
6 Approach to impact assessment	1 Biodiversity Development Assessment Report
7 Biodiversity	2 Aboriginal Cultural Heritage Assessment Report
8 Aboriginal heritage	2a Cultural Values Assessment
9 Landscape character and visual	3 Landscape character and visual impact assessment
10 Land use and agriculture	4 Agricultural impact assessment
11 Social	5 Social impact assessment
12 Economic	6 Economic impact assessment
13 Noise and vibration	7 Noise and vibration impact assessment
14 Traffic and access	8 Traffic and transport impact assessment
15 Hydrology, flooding and water quality	9 Hydrology, flooding and water quality impact assessment
16 Groundwater	10 Groundwater impact assessment
17 Non-Aboriginal heritage	11 Non-Aboriginal heritage impact assessment
18 Hazards and risk	12 Bushfire impact assessment
19 Air quality	13 Electric and magnetic fields (EMF) study
20 Climate change and greenhouse gas	14 Aviation impact assessment
21 Soils and contamination	15 Air quality impact assessment
22 Waste management	16 Greenhouse gas assessment
23 Sustainability	17 Contamination land impact assessment
24 Cumulative impacts	
Part C – EIS synthesis	
25 Environmental management	
26 Justification and conclusion	
27 References	

EIS overview – Part A | Project need and description



Chapter 1: Introduction

Provides an overview of the project and the contents of the EIS.



Chapter 2: Strategic context, need and project development

Describes the need for the project and the relevant Commonwealth and State government policies that support the project. It also outlines the key project objectives, how the project was developed via the route selection process and alternatives considered. More information can be found in **Appendix C – Options assessment report**.



Chapter 3: Project description

Outlines the key components of the project, including details of the built features, construction activities, and operation and ongoing maintenance.



Chapter 4: Statutory context

Explains the planning approval process and the planning instruments for the project. More information can be found in **Appendix D – Statutory compliance tables**.



Chapter 5: Stakeholder and community engagement

Summarises feedback received during the range of community and stakeholder engagement activities undertaken for the project. More information can be found in **Appendix E – Consultation outcomes report**.

EIS overview – Part B Environmental impact assessment



Chapter 6: Approach to impact assessment

Describes how potential impacts have been assessed as part of the EIS including identifying the potential environmental, social and economic impacts that may arise as a result of the project.

For more information, refer to Appendix F (Summary mitigation measures).



Chapter 7: Biodiversity

Details the potential impacts to biodiversity from construction and operation and proposed mitigation measures for these impacts. It describes existing vegetation and animal species within the project area, including threatened species. More information can be found in *Technical Paper 1 – Biodiversity development assessment report*.



Chapter 8: Aboriginal Heritage

Outlines the methodology used for assessing Aboriginal heritage impacts, assesses potential impacts and identifies mitigation measures. It also details Aboriginal engagement undertaken to inform the assessment. For more information, refer to *Technical Paper 2 – Aboriginal cultural heritage assessment report* and *Technical Paper 2a – Cultural values assessment*.



Image: Southern Bell Frog captured during surveys at the Edward River in March 2024.

EIS overview – Part B Environmental impact assessment



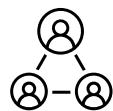
Chapter 9: Landscape character and visual

Identifies the potential impacts to landscape character and visual amenity during the construction and operation of the project, including a description of the assessment methodology, photomontages showing indicative views of the project and proposed mitigation measures. For more information, refer to *Technical paper 3 – Landscape character and visual impact assessment*.



Chapter 10: Land use and Agriculture

Considers the potential impacts on agricultural land use during both construction and operation of the project and proposes mitigation measures. For more information, refer to *Technical paper 4 – Agricultural impact assessment*.



Chapter 11: Social

Considers the social impacts (both positive and negative) during construction and operation of the project, and proposes mitigation measures. For more information, refer to *Technical paper 5 – Social*.



Chapter 12: Economic

Outlines the potential benefits to the regional and NSW economy and identifies measures to minimise negative economic impacts. For more information, refer to *Technical paper 6 – Economic*.

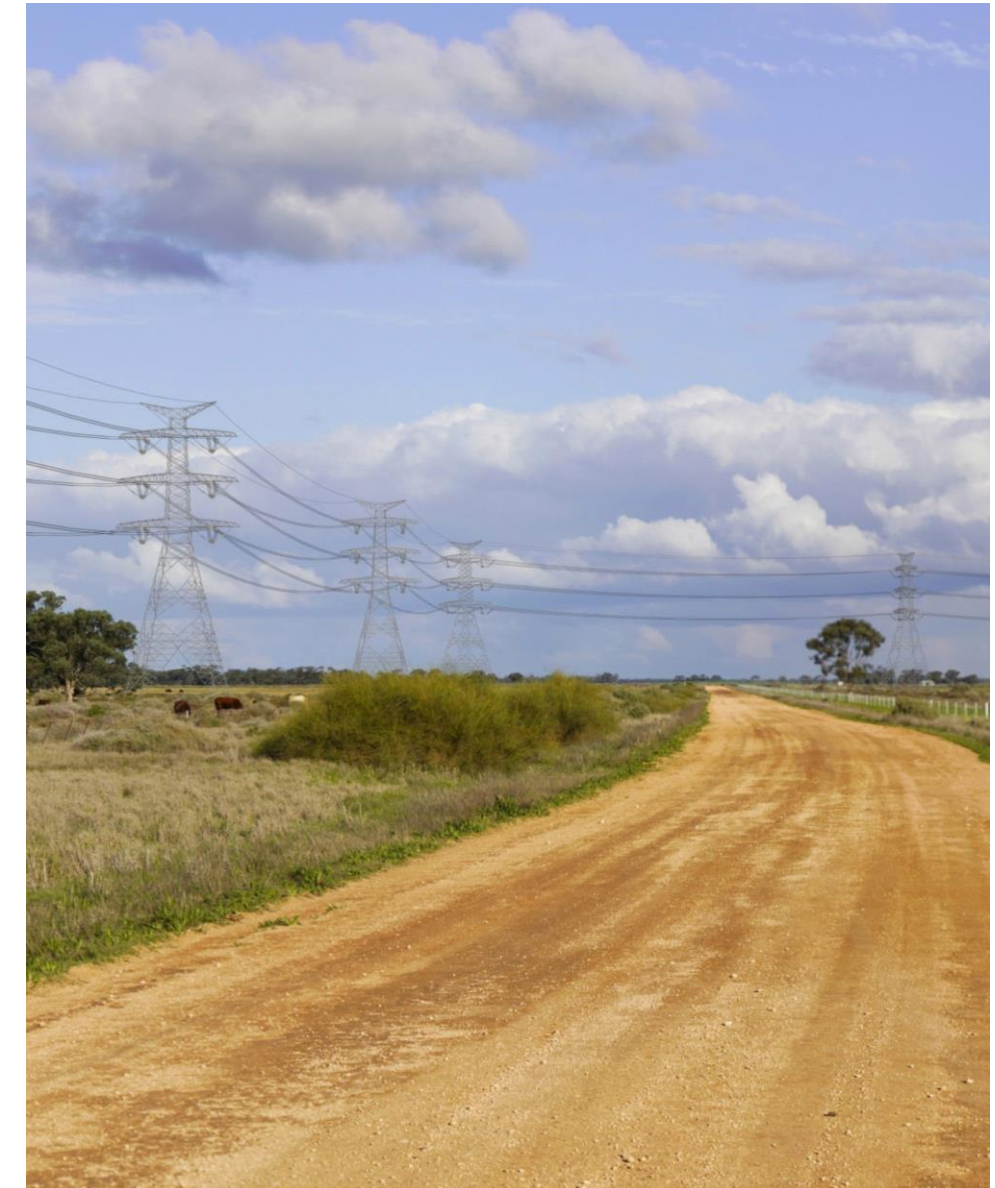


Image: Photomontage of transmission line on landscape

EIS overview – Part B Environmental impact assessment



Chapter 13: Noise and vibration

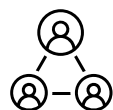
Considers noise and vibration impacts during both construction and operation of the project including mitigation measures.

For more information, refer to *Technical paper 7 – Noise and vibration impact assessment*.



Chapter 14: Traffic and access

Details the potential traffic impacts during both construction and operation of the project including proposed mitigation measures. It discusses traffic changes, heavy vehicle movements, traffic volumes and road capacity, property access, and road condition. For more information, refer to *Technical paper 8 – Traffic and transport impact assessment*.



Chapter 15: Hydrology, flooding and water quality

Assesses the impacts of the project during both construction and operation on flooding, hydrology and water quality including proposed mitigation measures. For more information, refer to *Technical paper 9 – Hydrology, flooding and water quality impact assessment*.



Chapter 16: Groundwater

Assesses the potential groundwater impacts during both construction and operation, and identifies proposed mitigation measures. For more information, refer to *Technical paper 10 – Groundwater impact assessment*.



EIS overview – Part B Environmental impact assessment



Chapter 17: Non-Aboriginal Heritage

Describes the existing environment as it relates to non-Aboriginal heritage and assesses potential impacts and mitigation measures. It outlines the history of the project area and known heritage sites. For more information, refer to *Technical paper 11 – Non-Aboriginal Heritage impact assessment*.



Chapter 18: Hazards and Risk

Outlines potential hazards and risks of the project during construction and operation, including proposed mitigation measures. Key topics addressed include aviation safety, bushfires, emergency egress and evacuation routes, electric and magnetic fields and dangerous goods and hazardous materials. For more information, refer to *Technical Paper 12 – Bushfire*, *Technical Paper 13 – Electric and Magnetic Fields (EMF) study*, and *Technical Paper 14 – Aviation*.



Chapter 19: Air quality

Outlines the potential impacts on air quality during both construction and operation of the project, including proposed mitigation measures. For more information, refer to *Technical paper 15 – Air quality*.



Chapter 20: Climate change and greenhouse gas

Considers the impact of climate change and greenhouse gas on the construction and operation of the project. For more information, refer to *Technical paper 16 – Greenhouse gas assessment*.

EIS overview – Part B Environmental impact assessment



Chapter 21: Soils and contamination

Describes the existing environment for soils and contamination, the potential impact from construction and operation of the project and proposes mitigation measures. For more information, refer to Technical Paper 17 – Contaminated land.



Chapter 22: Waste management

Outlines expected waste generation during construction and operation and how this will be managed.



Chapter 23: Sustainability

Outlines Transgrid's commitment to sustainability including their project specific sustainability strategy.



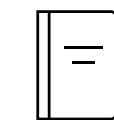
Chapter 24: Cumulative impacts

Assesses the potential cumulative impacts from the construction and operation of the project, when considered together with other relevant planned future projects in the VNI-West region.



Chapter 25: Environmental management

Outlines the approach to managing environmental impacts during construction and operation. It includes details of how environmental performance will be measured and evaluated and outlines relevant management plans and strategies.



Chapter 26: Justification and conclusion

Presents the justification for the project and a conclusion to the EIS. The justification incorporates the strategic need for the project, how the project objectives are achieved and an evaluation of the overall findings of the EIS.

EIS and CCG feedback: Ready reckoner

CCG Feedback

Theme raised	Topics	Information source
Compensation	Long-term operations	EIS Chapter 3, Section 3.4
	Compensation payment, strategic benefit payment	Transgrid Landholder Guidelines
	Personal construction plans	Discuss with Place Manager
	Hardship provisions	Merit assessment (discuss with Place Manager)
Community investment and benefit	Program parameters	Transgrid VNI West webpage
	Initiatives to include in scheme	Interim Report on VNI West webpage
	Call for greater level of social investment	Social Legacy FAQs on VNI West webpage
Aboriginal Heritage	More rigour into early engagement	EIS Chapter 5 and Technical Paper 2
	Changing landscape and location of artefacts	EIS Technical Paper 2, Sec 5.1.2
	Cumulative impact on Aboriginal cultural connection	EIS Technical Paper 2, Section 12.2
Property – Land use	Potential impact on rice growing land	VNI West Draft Route Report EIS Technical Paper 4
	Coordination between VNI West and lambing	EIS Technical Paper 4
	Disruption of stock movement.	Individuals: Property Management Plan

CCG Feedback

Theme raised	Topics	Information source
Property – Biosecurity	Risks from importation of materials / equipment	EIS Technical Paper 4, Chapter 8
	Weed spreading	EIS Chapter 10 Biosecurity Act 2015
Property - Aviation	Clear guidance for local operators	EIS Chapter 18 Hazards and Risk EIS Technical Paper 14
	Emergency service provision	
	Activities near transmission lines	EIS Technical Paper 14
	Viability of unregistered / existing airstrips	Just Terms Act 1991 (directly affected) Further assessment (neighbours) EIS Chapter 18 Hazards and Risk EIS Technical Paper 14
Biodiversity	Tree removal and replanting	EIS Chapter 7 EIS Technical Paper 1
	Impact on local flora / fauna, including noise impacts	
	Biodiversity offsets	EIS Technical Paper 1, Sec 8.6

CCG Feedback

Theme raised	Topics	Information source
Landscape character and visual impact	Impact on sight lines across plains	EIS Technical Paper 3
	Assessment limited by guidelines	EIS Chapter 9 EIS Technical Paper 3
	Photomontages	Available during EIS exhibition
	Photomontages with removed vegetation	EIS Technical Paper 3
	Character landscape features for Indigenous peoples	EIS Technical Papers 2 and 3
Traffic and Transport	Road conditions and early road upgrades	EIS Chapter 14 Traffic and access
	List of roads proposed to be impacted	EIS Technical Paper 8
	Capacity of local roads to accommodate equipment transport	Vehicle Movement Plan (to be developed with Transport for NSW)
Socio-economic	Fears of rising insurance costs	EIS Chapter 11 Transgrid's insurance policy
	Telecommunications improvements	Transgrid website – Social Legacy initiatives
	Workforce / employment coordination	Workforce Development Plan and Local Industry Participation Plan – to be developed EIS Technical Paper 5.

CCG Feedback

Theme raised	Topics	Information source
Socio-economic (cont.)	Meeting targets for proposed Indigenous workforce	Aboriginal Participation Plan to be developed EIS Technical Paper 5
	Meeting targets for local benefits	EIS Technical Paper 5
Flooding and water	Access to groundwater / water access points	EIS Chapter 3, and Table 3.4 EIS Chapter 15
	Preventing water removal from dams	EIS Chapters 3, 15 and 16
	Consideration of flooding at a local level	EIS Chapter 15, Section 15.2
Hazards and Risk	Bushfire management: fighting fires, liabilities, protocols and responsibilities	EIS Chapter 18 EIS Technical Paper 12
	Heightened risk of bushfires and grassfires	EIS Chapter 18 EIS Technical Paper 12
	Opportunity to train temporary workforce staff	Bushfire Emergency Management and Evacuation Sub-plan to be developed
	Support for local RFS brigades	EIS Technical Paper 5, Section 8
	EIS review of potential health impacts / how EMF is measures	EIS Chapter 18

CCG Feedback


Theme raised	Topics	Information source
Project justification	Application of RIT-T process to current project development	VNI West RIT-T - links on VNI West webpage
	Concern for VNI West in Victoria	Transmission Company Victoria website
Construction impacts	Construction timing	EIS Chapter 3, Section 3.5
	Tower construction, parameters, material transport	EIS Chapters 3 and 14
Workforce accommodation	Housing of construction workers, location of accommodation camps	EIS Chapter 3, Section 3.5
Regional impacts	Coordination between Transgrid and renewable developers	EIS Chapter 24
	Local landscape changes from Transgrid and renewable projects	
	Mental health / physical health concerns	Transgrid's support service EIS Technical Paper 5

Digital EIS



Digital EIS

- An interactive digital EIS will also be available through the project website (transgrid.com.au/projects-innovation/vni-west).
- This will provide an online tool to explore the EIS.



Victoria to NSW Interconnector project

[Digital EIS](#) [Planning documents](#) [Make a submission](#) [Contact us](#)

Digital Environmental Impact Statement

Project overview

Strategic context, need and project development

Project description

Statutory context

Community and stakeholder engagement

Approach to impact assessment

Biodiversity

Project overview

This section provides an overview of the project, the proponent, and related projects. Further details are provided in Chapter 1 (Introduction) and Chapter 26 (Justification and conclusion) of the EIS at the links below.

Overview

Key features of the project


Related development

Download Chapter 1 (Introduction)

Download Chapter 26 (Justification and conclusion)

→ Strategic context, need and project development

Digital EIS



Victoria to NSW Interconnector project

[Digital EIS](#)

[Planning documents](#)

[Make a submission](#)

[Contact us](#)

Project overview

Strategic context, need and project development

Project description

Statutory context

Community and stakeholder engagement

Approach to impact assessment

Biodiversity

Aboriginal heritage

Landscape character and visual heritage

Strategic context, need and project development

This section provides a summary of need for the project, how the project fits within strategic context of relevant Australian and NSW Government policies and an overview of the project development process undertaken to determine the current project design. Further details are provided in Chapter 2 (Strategic context, need and project development) of the EIS at the link below.

Project need and benefits

To meet our future energy demands, Australia needs to transition to a greater mix of low-emission renewable energy sources, such as wind and solar. The development of a new interconnector between NSW and Victoria would meet the energy transition policy needs by providing an important connection to both the South West REZ (NSW) and Murray River REZ (Victoria). The development of VNI West would provide a key electricity transmission connection between Victoria and south western NSW to encourage future renewable energy providers to invest in lower emission electrical generation alternatives within this region and the identified REZs.

The project is also consistent with the AEMO's roadmap for the NEM, the 2024 Integrated System Plan (ISP) (AEMO, 2024), and relevant strategic NSW planning and policy documents, including the NSW Transmission Infrastructure Strategy (DPE, 2018) and the NSW Electricity Strategy (DPIE, 2019). In particular, AEMO has identified VNI West as a key 'already actionable' transmission project (AEMO,2024).

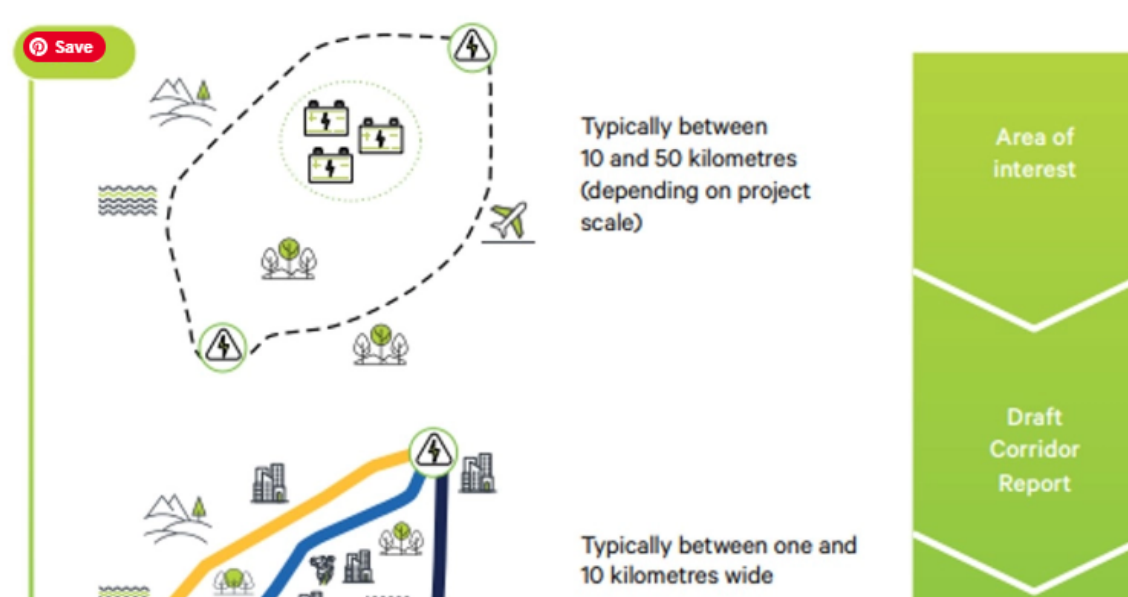
The development of a new interconnector between NSW and Victoria would expand the power transfer capability between regions these regions and enable:

- the efficient sharing of generation resources between regions in the NEM
- encouragement of more efficient investment in low-cost generation sources, allowing overall demand and system reliability requirements to be met at lowest cost

Project development

The development of the project involved a robust process commencing with the regulatory assessment of strategic and technical options (the Regulatory Investment Test for Transmission (RIT-T) process), then progressing to detailed corridor and route refinement process and the identification of strategies to avoid and minimise a broad range of environmental, social and land use impacts. Chapter 2 (Strategic context, need and project development) of the EIS provides further information on the project development processes. These processes involved engagement with landholders, communities and key stakeholders.

The figure below provides an overview of the main phases of the corridor and route selection process undertaken for the project.




Typically between 10 and 50 kilometres (depending on project scale)

Typically between one and 10 kilometres wide

Area of interest


Draft Corridor Report



Transgrid

Official

Digital EIS



Victoria to NSW Interconnector project

Digital EIS

Planning documents

Make a submission

Contact us

Project overview

Strategic context, need and project development

Project description

Statutory context

Community and stakeholder engagement

Approach to impact assessment

Biodiversity

Aboriginal heritage

Landscape character and visual heritage

Land use and agriculture

Social

Economic

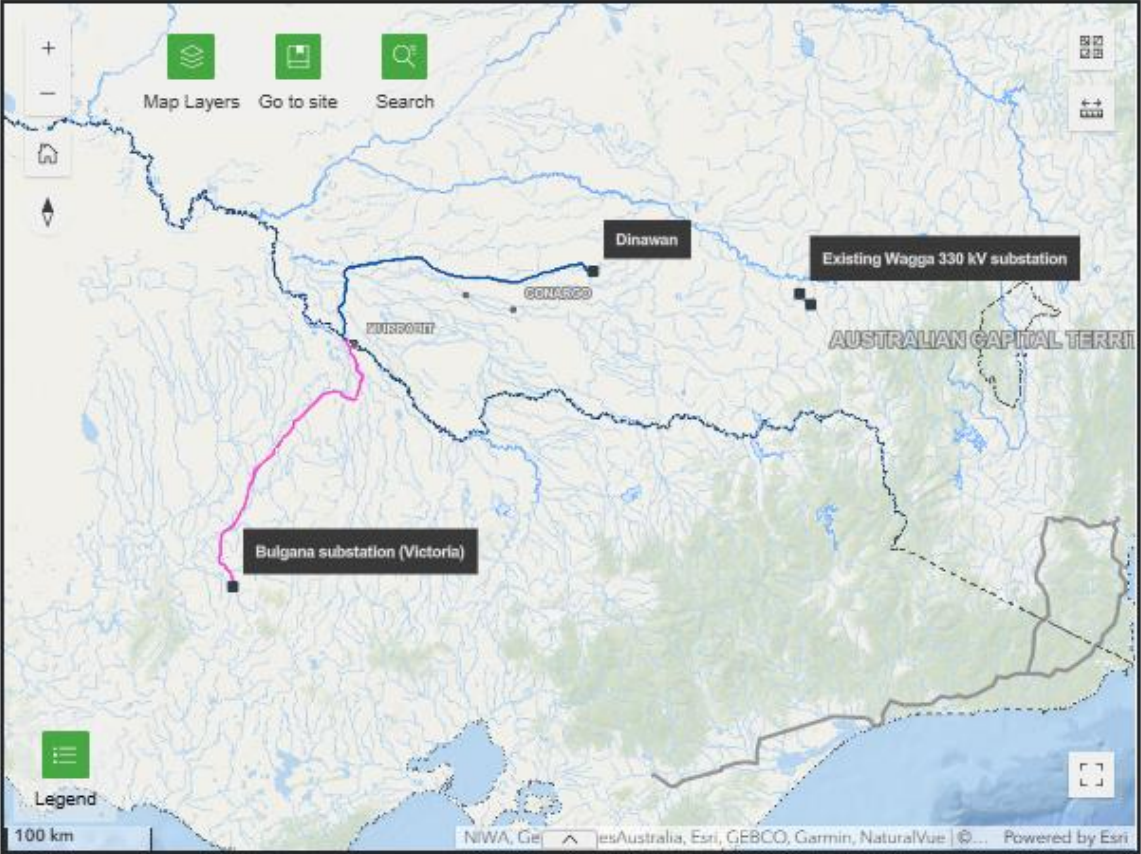
Noise and vibration

Traffic and access

Project description

This section provides a summary of the key aspects of the project, including key infrastructure and construction. Further details of the construction and operation of the project are provided in Chapter 3 (Project description) of the EIS at the link below.

Click on the Map Layers button on the interactive map below to show different elements of the project including the project footprint, indicative transmission line structure locations, combined temporary worker accommodation facilities, construction compounds and access tracks.






Map Layers Go to site Search

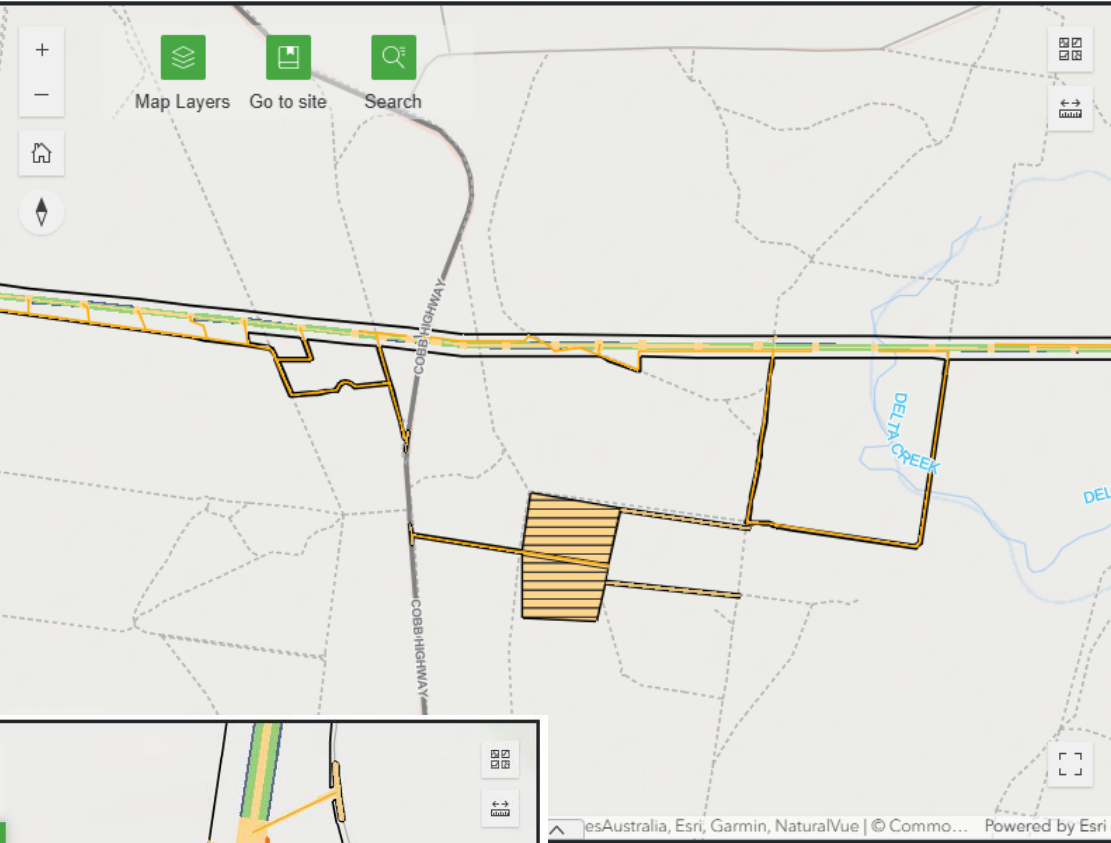
Legend 100 km

Project Description

Project location



Map Layers Go to site Search




Map Layers

- Substation
- Access tracks
- Combined temporary worker accommodation facility
- Construction compound
- Indicative disturbance footprint

Legend 200 m





Victoria to NSW Interconnector project

Digital EIS

[Planning documents](#)

Make a submission

Contact us

Project planning and environmental impact assessment documents

Skip to section

EIS Chapters


Appendix

Technical Paper

EIS Chapters

Chapter	Description
Part A – Project and need	
Summary	Summary document
Chapter 1	Introduction
Chapter 2	Strategic context, need and project development
Chapter 3	Project description
Chapter 4	Statutory context

Digital EIS



Victoria to NSW Interconnector project

[Digital EIS](#) [Planning documents](#) [Make a submission](#) [Contact us](#)

Digital Environmental Impact Statement

Project overview

Strategic context, need and project development

Project description

Statutory context

Community and stakeholder engagement

Approach to impact assessment

Biodiversity

Project overview

This section provides an overview of the project, the proponent, and related projects. Further details are provided in Chapter 1 (Introduction) and Chapter 26 (Justification and conclusion) of the EIS at the links below.

Overview

Key features of the project


Related development


Download Chapter 1 (Introduction)

Download Chapter 26 (Justification and conclusion)

➔ Strategic context, need and project development

A NSW Government website



 [Find a Property](#) [My Account](#)

[myHome Planner](#) [Development and Assessment](#) [Insights and Demography](#) [Have your say](#) [Help and Resources](#)

[Home](#) > [Major Projects](#) > [Projects](#) > Victoria to NSW Interconnector West

State Significant Infrastructure

Prepare EIS

Victoria to NSW Interconnector West

Edward River

Current Status: Prepare EIS

Interact with the stages for their names

✓

●

○

○


○

○

○

○

49



Official

EIS engagement schedule



What we're planning

- Advertising:
 - First advertisement appearing in local newspapers next week (8-10 July).
 - Additional advertising to appear closer to EIS exhibition public sessions (late July)
- Email:
 - Email blast to project updates list
 - Email advice to directly affected landholders
- Posters / postcards:
 - Promotional information / QR codes as pointers to information
- Online information:
 - Website
 - Digital EIS
- Information sessions:
 - Project team members and technical experts (WSP)
 - EIS-specific Fact Sheets
 - Working draft schedule on next slide

EIS exhibition schedule – Confirmed

Monday	Tuesday	Wednesday	Thursday	Friday	Saturday	Sunday
			24 July EIS Lodgement	1 August Anticipate: Start of EIS exhibition	2	3
4	5	6	7	8	9 August Moulamein MFNC	10 August Moulamein
11 August Mallan (AM) Moulamein (PM)	12 August Wanganella	13 August Deniliquin (AM) Conargo (PM)	14 August Jerilderie	15 August Wagga Wagga	16	17
18	19 August Coleambally	20 August Mallan	21 August Moulamein	22 August Wanganella	23 August Deniliquin Lions Market	24
25 August Wagga Wagga	26	27	28	29 August Anticipate: Close of EIS exhibition	30	31

Wrap up and close



Next meetings

- Next meeting (# 11) on calendar is Thursday 18 September.
- Subsequent meeting (# 12) is on calendar for Thursday 4 December.

Anticipated focus for discussion

- # 11: Post EIS Exhibition / Next steps in EIS approvals process
- # 12: Submissions – progress update, responses.

Meeting close

Thank you for your time

1800 955 588

vniw@transgrid.com.au

www.transgrid.com.au/vniw