

Have your say | December 2025

Transmission line stringing across Yaven Creek Road, Ellerslie

REF: HLW-096

HumeLink is one of Australia's largest energy infrastructure projects connecting renewable energy sources to the grid and helping to put downward pressure on energy prices. The project consists of 365 kilometres of 500 kV overhead transmission lines connecting Wagga Wagga, Bannaby and Maragle and is being delivered in two sections. The section between Wagga Wagga, Maragle and Wondalga is being constructed by UGL Engineering and CPB Contractors, working in joint venture as the HumeLink West JV.

About the proposed temporary day time closure of Yaven Creek Road, Ellerslie

HumeLink West are planning to string new transmission lines across Yaven Creek Road, Ellerslie for about five weeks between April and May 2026 (timing is to be confirmed). Installing these new lines **will require road closures and we are seeking feedback** on how we can minimise disruption to road users and the community.

Due to site constraints, including topography (uneven ground), the transmission lines will be close to ground level while they are being tensioned. Traffic will not be able to safely pass underneath the lines while this work is undertaken.

To complete the work as efficiently as possible and to minimise the period of road closures, we are seeking feedback on the proposed changed traffic conditions:

Week 1 (preparation for stringing of the transmission line)

- Yaven Creek Road: Open
- Ellerslie Road: Hold and release (short term closure of up to 15 mins) on three occasions on one day – with specific timing to be confirmed closer to the date.

Weeks 2, 3 and 4 (stringing of the transmission line)

- Yaven Creek Road: Closed 7am to 6pm each day between Westwood Road and Ellerslie Road, detour traffic via Ellerslie Road and Snowy Mountains Highway (see map on page 2)
- Ellerslie Road: Hold and release (short term closure of up to 15 mins) once a day for 10 days

Week 5 (demobilising)

- Yaven Creek Road: Open
- Ellerslie Road: Hold and release (short term closure of up to 15 mins) on three occasions on one day – with specific timing to be confirmed closer to the date.

Access will be provided by traffic controllers for scheduled bus services and emergency services during the closure. Local access to Westwood Road will remain available.

Prior to the work we will provide a notification and install variable messaging signs to ensure road users are aware of impacts in advance. SMS notifications will be provided where requested.

Alternative options were investigated. however they would still require Yaven Creek Road and Ellerslie Road closures on a frequent basis and would extend the period of work to up to seven weeks.

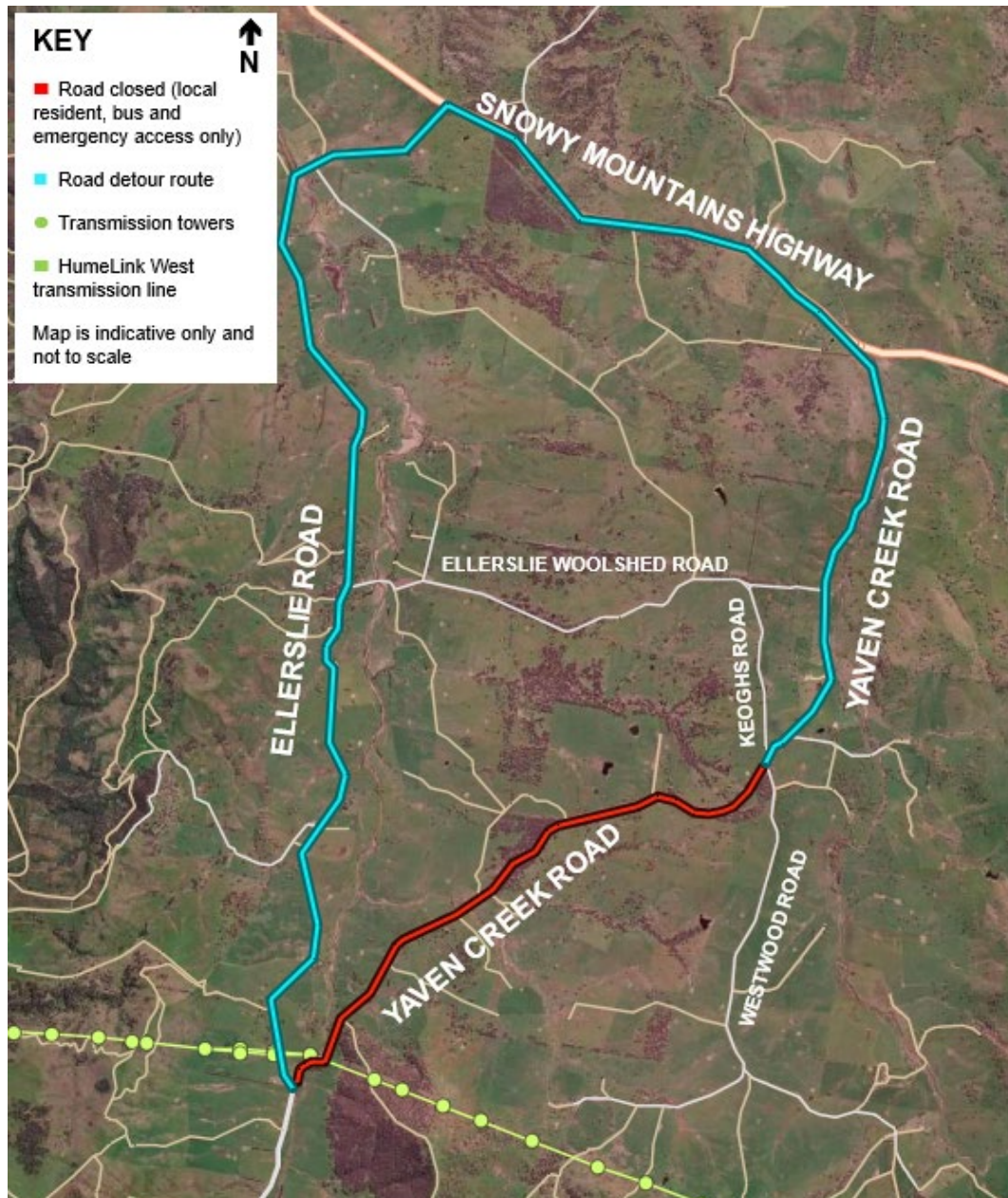
Refer to the map over the page for details of the proposed road closure and detour routes.

Your feedback and next steps

We will consider community feedback and finalise design and a traffic management plan that minimises disruption as much as practicable. We will notify the community in advance of road closures via electronic message signs on the road and SMS alerts if contact details are provided.

We welcome any questions you have on this proposal, or any other aspect of the project.

Location of line stringing and three week closure at Yaven Creek Road



Connect with us

Transgrid is committed to working with landowners and communities through the development of HumeLink. Please connect with us for more information.



1800 317 367 (free call)
humelink@transgrid.com.au

www.transgrid.com.au/humelink



For an interpreter, call **131 450** and ask the service to call Transgrid on **1800 317 367**.

Privacy statement: Transgrid recognises the importance of privacy and protecting the personal information it holds, uses and discloses in line with the Privacy Act. It is committed to protecting personal information and handling personal information responsibly and in accordance with its obligations.

Contact us

We want to understand how a closure of Yaven Creek Road would impact you, how we can work around it, and be able to notify you directly by SMS of planned road closures.

Please contact us **by 19 December 2025** so we can include your comments and ideas in our planning. Contact us at any time to receive SMS alerts of road closures.

Phone: 1800 317 367

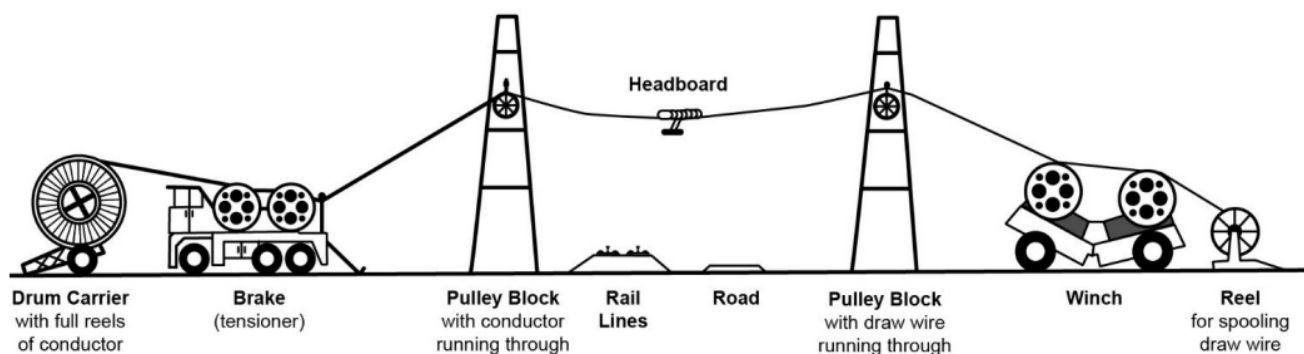
Email: humelink@transgrid.com.au

In person: Snowy Valleys Resilience Hub, open 9am to 5pm, Thursdays and Fridays.

About transmission line stringing

Once transmission structures have been erected and secured, the transmission line would typically be strung by either ground pulled draw wire (with brake and winch sites), helicopter or line stringing drone. An indicative illustration of stringing transmission line across roads is shown below.

More detailed information about the construction of transmission towers and lines is available at www.transgrid.com.au/projects-innovation/humelink/fact-sheets under the Transmission and Substation Infrastructure section.



Stay up to date with our work

Please head to transgrid.com.au/HumeLink or scan the QR code to subscribe to regular updates, and for more information on the project.

Connect with us

Transgrid is committed to working with landowners and communities through the development of HumeLink. Please connect with us for more information.



1800 317 367 (free call)

humelink@transgrid.com.au

www.transgrid.com.au/humelink



For an interpreter, call **131 450** and ask the service to call Transgrid on **1800 317 367**.

Privacy statement: Transgrid recognises the importance of privacy and protecting the personal information it holds, uses and discloses in line with the Privacy Act. It is committed to protecting personal information and handling personal information responsibly and in accordance with its obligations.