

## Work Notification | June 2025

### Out-of-hours work at Tarcutta

REF: HLW-064

HumeLink is one of Australia's largest energy infrastructure projects connecting renewable energy sources to the grid and helping to put downward pressure on energy prices. The project consists of 365 kilometres of 500 kV overhead transmission lines connecting Wagga Wagga, Bannaby and Maragle and is being delivered in two sections.

The section between Wagga Wagga, Maragle and Wondalga is being constructed by UGL Engineering and CPB Contractors, working in joint venture as the HumeLink West JV.

### About the work

We are continuing enabling work activities at Wilds Road and Comatawa Road, Tarcutta **until September 2025** establishing access tracks and laydown areas for use during the transmission line construction. Work hours have been extended for Saturday, Sunday and public holidays. Activities will be intermittent during this time and may include:

- Locating underground utilities and services including power, gas, water and telecommunications
- Survey, investigation and monitoring including biodiversity, heritage, noise, dust and vegetation
- Geotechnical investigations to inform the detailed design of the transmission line
- Installing and adjusting fencing, and compacting and surfacing access points
- Minor vegetation clearing and earthwork
- Equipment and other deliveries to work sites
- Drone and aerial photography.

All work will be carried out in line with the project [Conditions of Approval](#) available on the NSW Government Major Projects website [planningportal.nsw.gov.au/major-projects/projects/humelink](http://planningportal.nsw.gov.au/major-projects/projects/humelink).

### What you can expect

There will be an increased number of construction vehicles across the project area during out-of-hours work. The type of plant and equipment you can expect to see at this compound are generators, elevated work platforms, telehandlers, cranes, forklifts, water carts, excavators with attachments, compactors, earth moving equipment, drone cameras, heavy and light vehicles.

We will make every effort to minimise impacts by:

- Minimising the number of machines and vehicles to be used
- Ensuring all machinery and vehicles are maintained and serviced
- Turning off machinery and vehicles when not in use
- Fitting equipment with devices to minimise noise
- Monitoring dust, noise and vibration to manage any potential impacts and change our work if required.

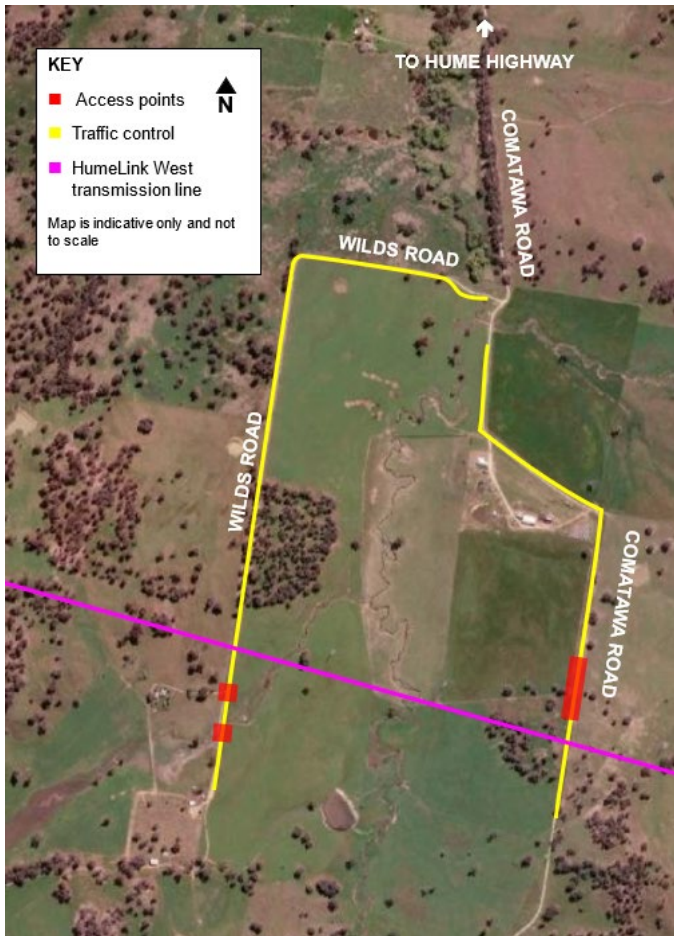
Traffic control will be in place when required, including temporary traffic lights, variable message signs, boom gates, signage, speed reductions and stop/slow traffic management. Please keep to the signposted speed limits, follow the direction of traffic controllers, and drive to the conditions such as slowing down in wet weather and poor visibility. For the latest traffic updates, visit [livetraffic.com](http://livetraffic.com) or download the app Live Traffic NSW.

### When we are working

Work will take place 7am to 6pm Monday to Sunday including public holidays.

## Where we will be working

Out-of-hours work will take place at Wilds Road and Comatawa Road, Tarcutta shown in the map below.



## What happens next

We'll continue to keep you updated about the project and let you know of any work we're planning that might impact you. If you have any questions about the project, please contact our Community and Stakeholder Engagement team on **1800 317 367** or [humelink@transgrid.com.au](mailto:humelink@transgrid.com.au).

We welcome your feedback on the HumeLink West JV Community Communications Strategy. Visit [transgrid.com.au/humelink-west/#Strategies-Plans-and-Programs](https://transgrid.com.au/humelink-west/#Strategies-Plans-and-Programs) to view the strategy, and connect with us to have your say.



### Stay up to date with our work

Please head to [transgrid.com.au/HumeLink](https://transgrid.com.au/HumeLink) or scan the QR code to subscribe to regular updates, and for more information on the project.

## Connect with us

Transgrid is committed to working with landowners and communities through the development of HumeLink. Please connect with us for more information.



**1800 317 367** (free call)

[humelink@transgrid.com.au](mailto:humelink@transgrid.com.au)

[www.transgrid.com.au/humelink](https://www.transgrid.com.au/humelink)



For an interpreter, call **131 450** and ask the service to call Transgrid on **1800 317 367**.

**Privacy statement:** Transgrid recognises the importance of privacy and protecting the personal information it holds, uses and discloses in line with the Privacy Act. It is committed to protecting personal information and handling personal information responsibly and in accordance with its obligations.