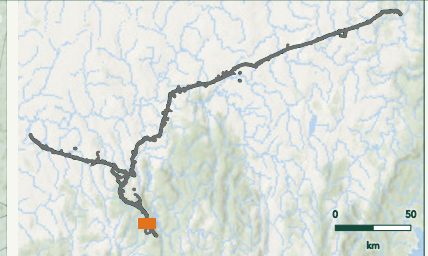
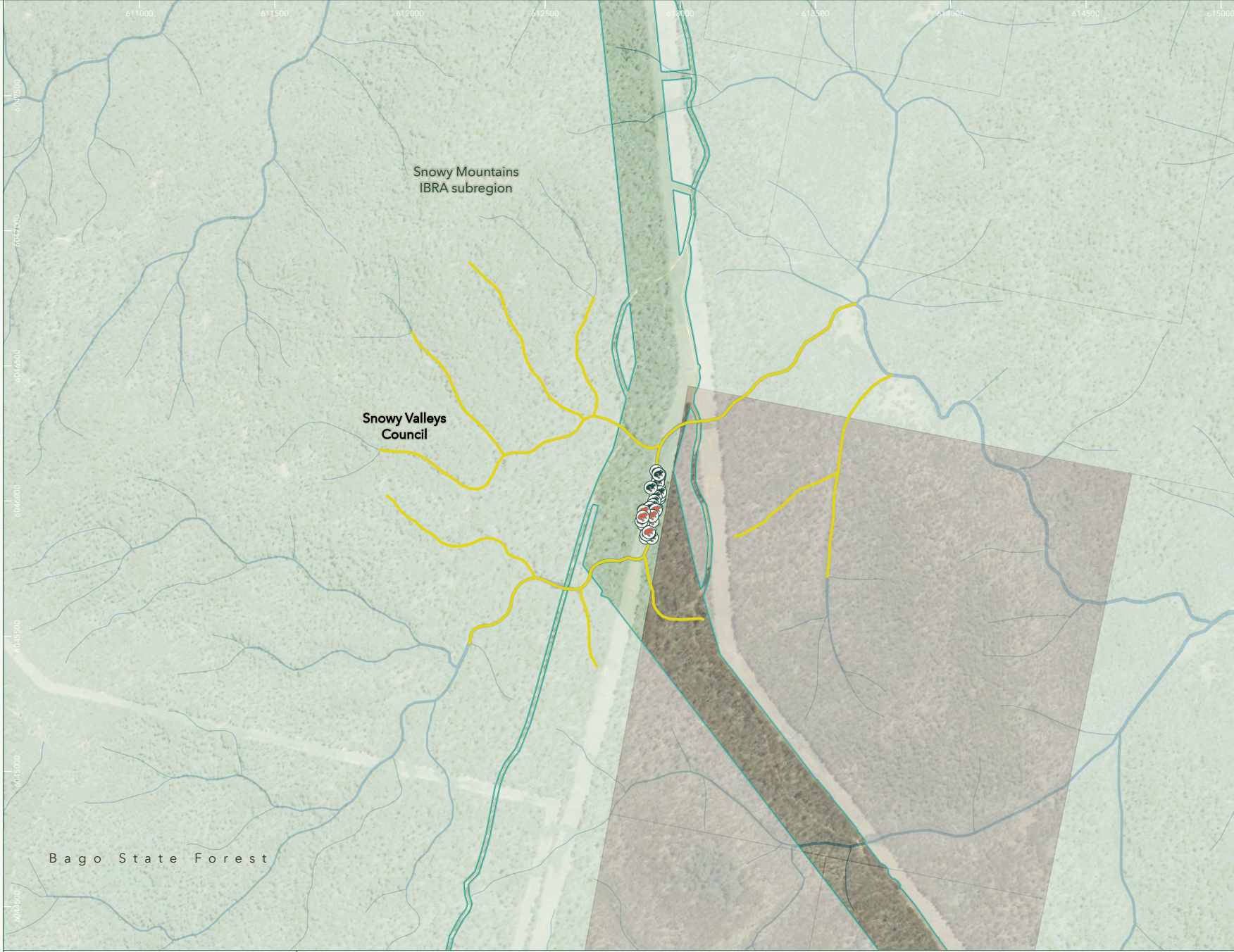


File: C:\OneDriveSync\FolderNiche\GIS - APRX - APRX\8700\8758_HumelinkPostConsentSurveys_NSW\Pro\8758_HumelinkPostConsentSurveys_BAVR.aprx Last updated: 15/07/2025 5:04 PM

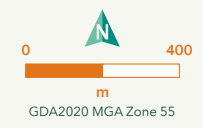


- Project footprint
- Rapid habitat assessment**
 - Suitable frog habitat (36)
 - Not suitable frog habitat (9)
- Streams**
 - Long Creek
 - Suitable
- Hydrography**
 - Strahler stream order
 - 1
 - 2
 - 3
 - 4
 - 5
 - Waterbody
- Protected Areas of NSW**
 - State Forest
- Administrative and Property Boundaries**
 - Lot
 - Local Government Area

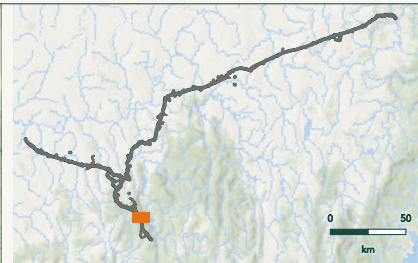
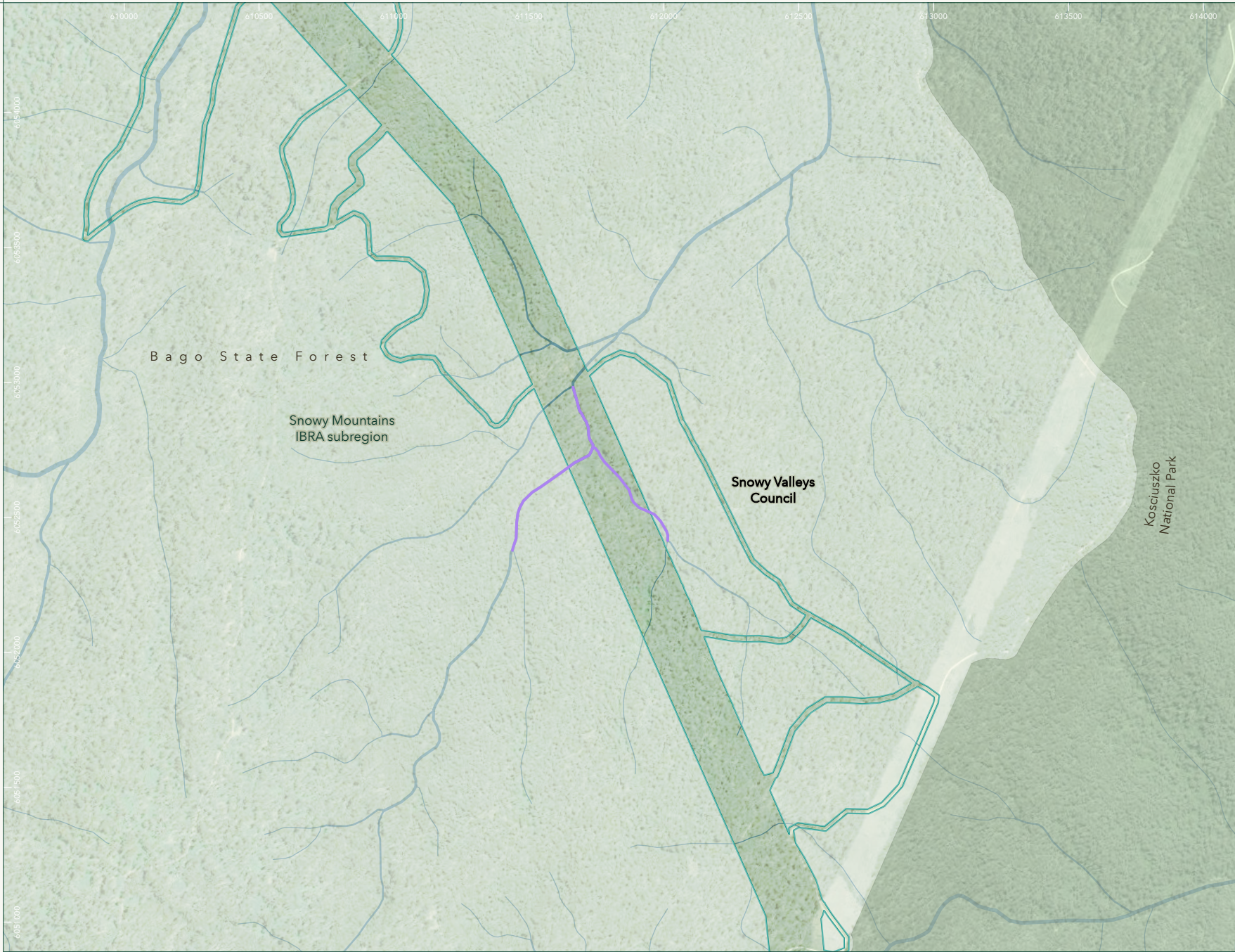


Figure 3c map reference 1
Habitat constraints assessment (streams)
Humelink Post Consent Surveys - BAVR

Niche PM: Chani Wheeler
Niche Proj. #: 8758
Client: TransGrid



File: C:\OneDrive\Sync\Folder\Niche\GIS - APRX - APRX\A8700\A8758_HumelinkPostConsentSurveys_BAVR.aprx Last updated: 15/07/2025 5:04 PM



- Project footprint
- Streams
 - Stockmans Creek
 - Suitable
- Hydrography
 - Strahler stream order
 - 1
 - 2
 - 3
 - 4
 - 5
- Protected Areas of NSW
 - National Park
 - State Forest
- Administrative and Property Boundaries
 - Lot
 - Local Government Area

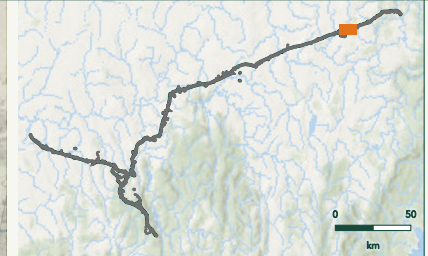
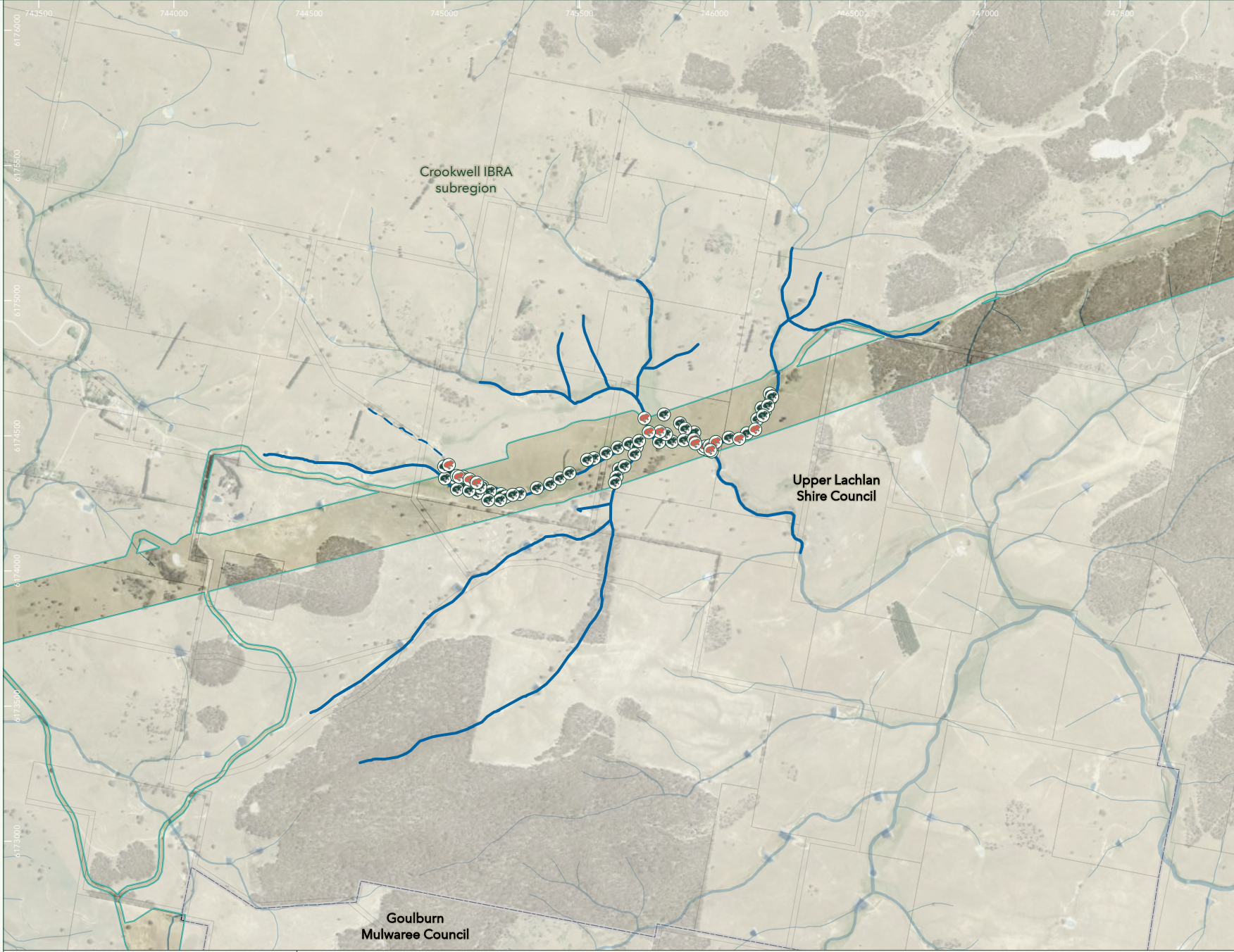


Figure 3c map reference 2
Habitat constraints assessment (streams)
Humelink Post Consent Surveys - BAVR

Niche PM: Chani Wheeler
Niche Proj. #: 8758
Client: TransGrid



File: C:\OneDriveSync\FolderNiche\GIS - APRX - APRX\8700\8758_HumelinkPostConsentSurveys_NSW\Pro\8758_HumelinkPostConsentSurveys_BAVR.aprx Last updated: 15/07/2025 5:04 PM

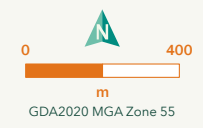


- Project footprint
- Rapid habitat assessment**
 - Suitable frog habitat (57)
 - Not suitable frog habitat (17)
- Streams**
 - Melamalong Creek
 - Suitable
 - Unsuitable
- Hydrography**
 - Strahler stream order
 - 1
 - 2
 - 3
 - 4
 - 5
 - Waterbody
- Administrative and Property Boundaries**
 - Lot
 - Local Government Area



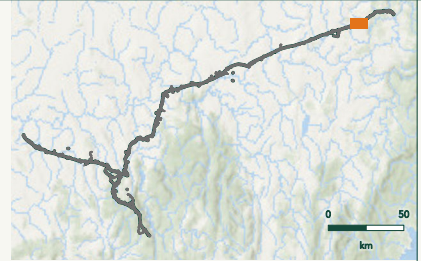
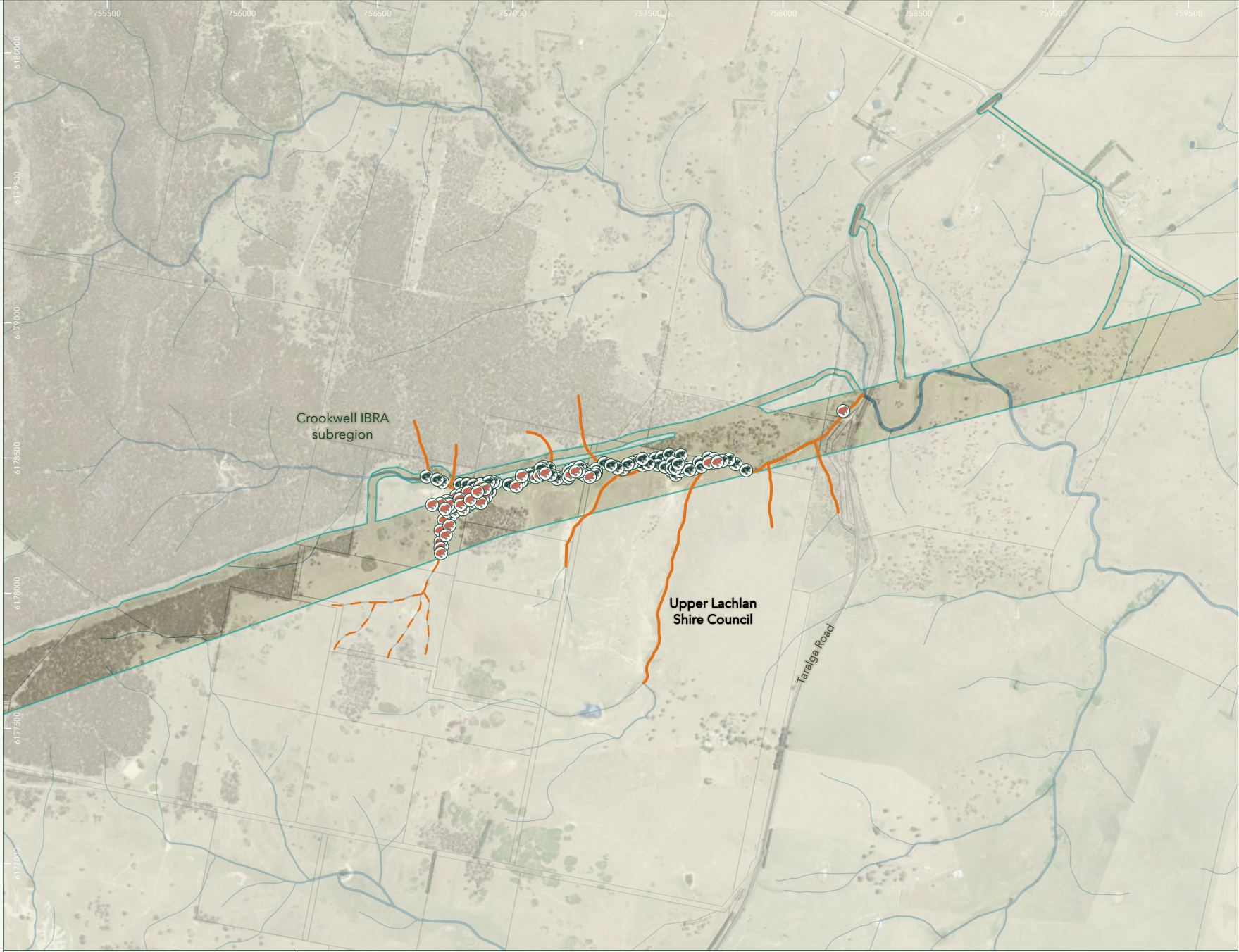
Figure 3c map reference 3
Habitat constraints assessment (streams)
Humelink Post Consent Surveys - BAVR

Niche PM: Chani Wheeler
Niche Proj. #: 8758
Client: TransGrid



Local Government Area: / Lot: / Hillshade: Esri, USGS/ Transparency Mask: / Road: / World_Ocean_Base: Esri, GEBCO, Garmin, NaturalVue/ Rail: / NPWS Reserve: / State Forest: / Waterbody: / public/NSW_ Imagery: © Department of Customer Service 2020 | Watercourses, Waterbodies, Road and Rail alignments, Protected areas of NSW © Spatial Services 2021. | Niche uses GDA2020 as standard for all project-related data. In order to ensure that data from numerous sources and coordinate systems is aligned, on-the-fly transformation to GDA2020 MGA Zone 55 is used in the map above. For ease of reference, the grid tick marks and labels shown around the border of the map are presented in GDA2020 MGA Zone 55.

File: C:\OneDriveSync\FolderNiche\GIS - APRX - APRX\8700\8758_HumelinkPostConsentSurveys_NSW\Pro\8758_HumelinkPostConsentSurveys_BAVR.aprx Last updated: 15/07/2025 5:04 PM



- Project footprint
- Rapid habitat assessment
 - Suitable frog habitat (100)
 - Not suitable frog habitat (51)
- Streams
 - Upstream of Cowpers Creek
 - Suitable
 - Unsuitable
- Transport
 - Major road
- Hydrography
 - Strahler stream order
 - 1
 - 2
 - 3
 - 4
 - Waterbody
- Administrative and Property Boundaries
 - Lot
 - Local Government Area

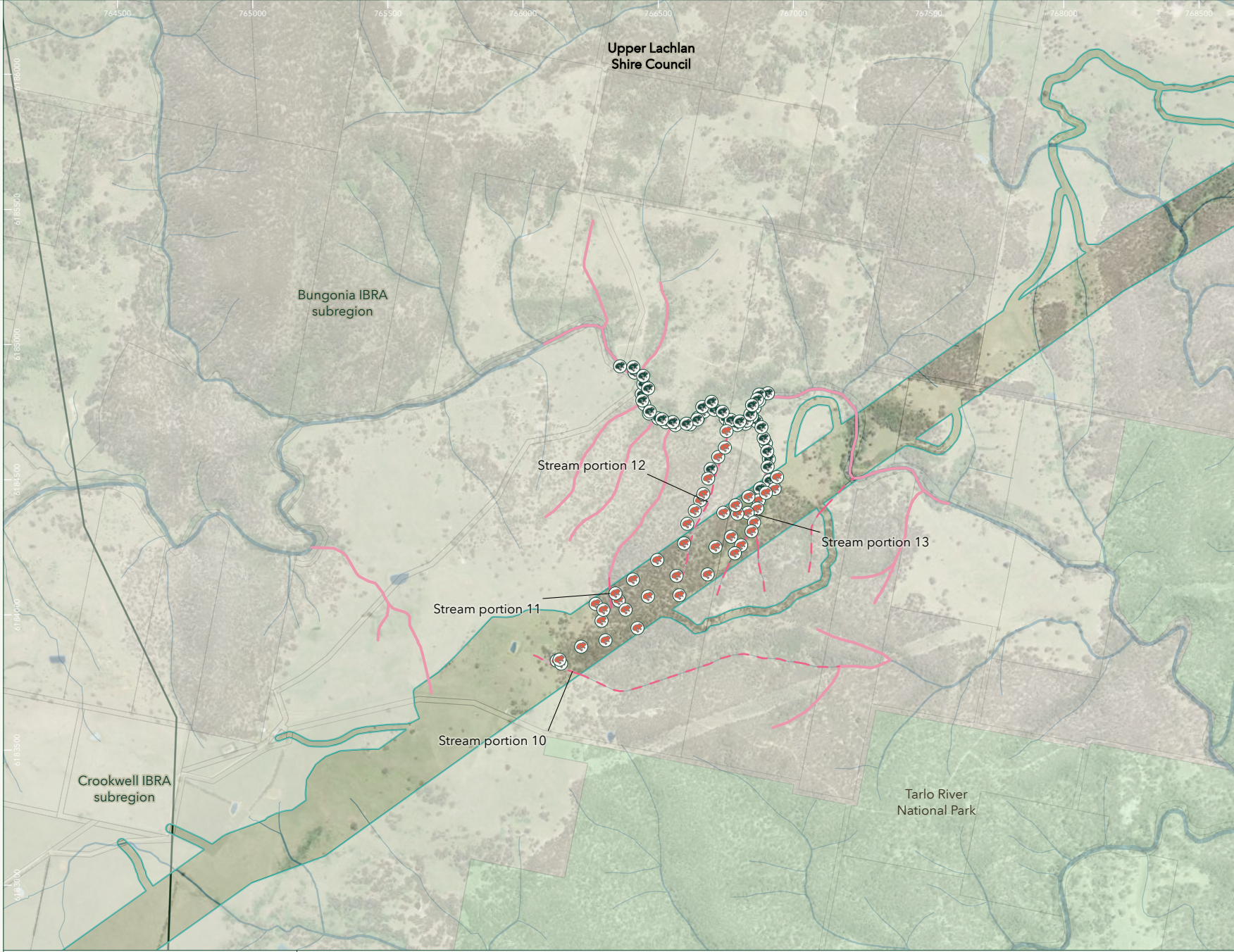


Figure 3c map reference 4
Habitat constraints assessment (streams)
Humelink Post Consent Surveys - BAVR

Niche PM: Chani Wheeler
Niche Proj. #: 8758
Client: TransGrid



File: C:\OneDriveSync\FolderNiche\GIS - APRX - APRX\Aa700\Aa758_HumelinkPostConsentSurveys_BAVR.aprx Last updated: 15/07/2025 5:04 PM

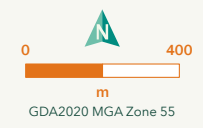


- Project footprint
- Rapid habitat assessment**
 - Suitable frog habitat (51)
 - Not suitable frog habitat (43)
- Streams**
 - Kerrawary Creek
 - Suitable
 - Unsuitable
 - IBRA Subregion
- Hydrography**
 - Strahler stream order
 - 1
 - 2
 - 3
 - 4
 - 5
 - Waterbody
- Protected Areas of NSW**
 - National Park
- Administrative and Property Boundaries**
 - Lot
 - Local Government Area



Figure 3c map reference 5
Habitat constraints assessment (streams)
Humelink Post Consent Surveys - BAVR

Niche PM: Chani Wheeler
Niche Proj. #: 8758
Client: TransGrid



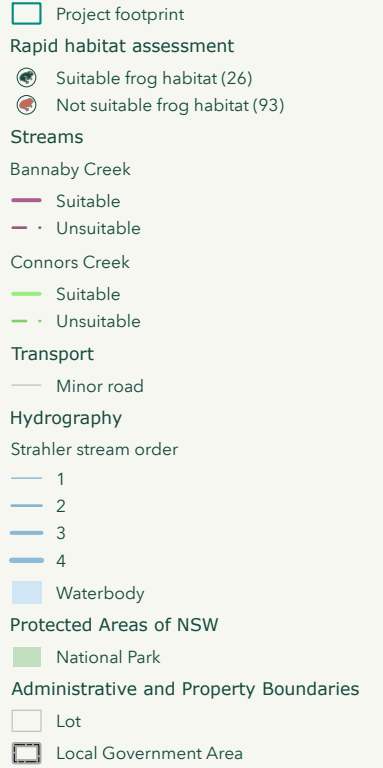
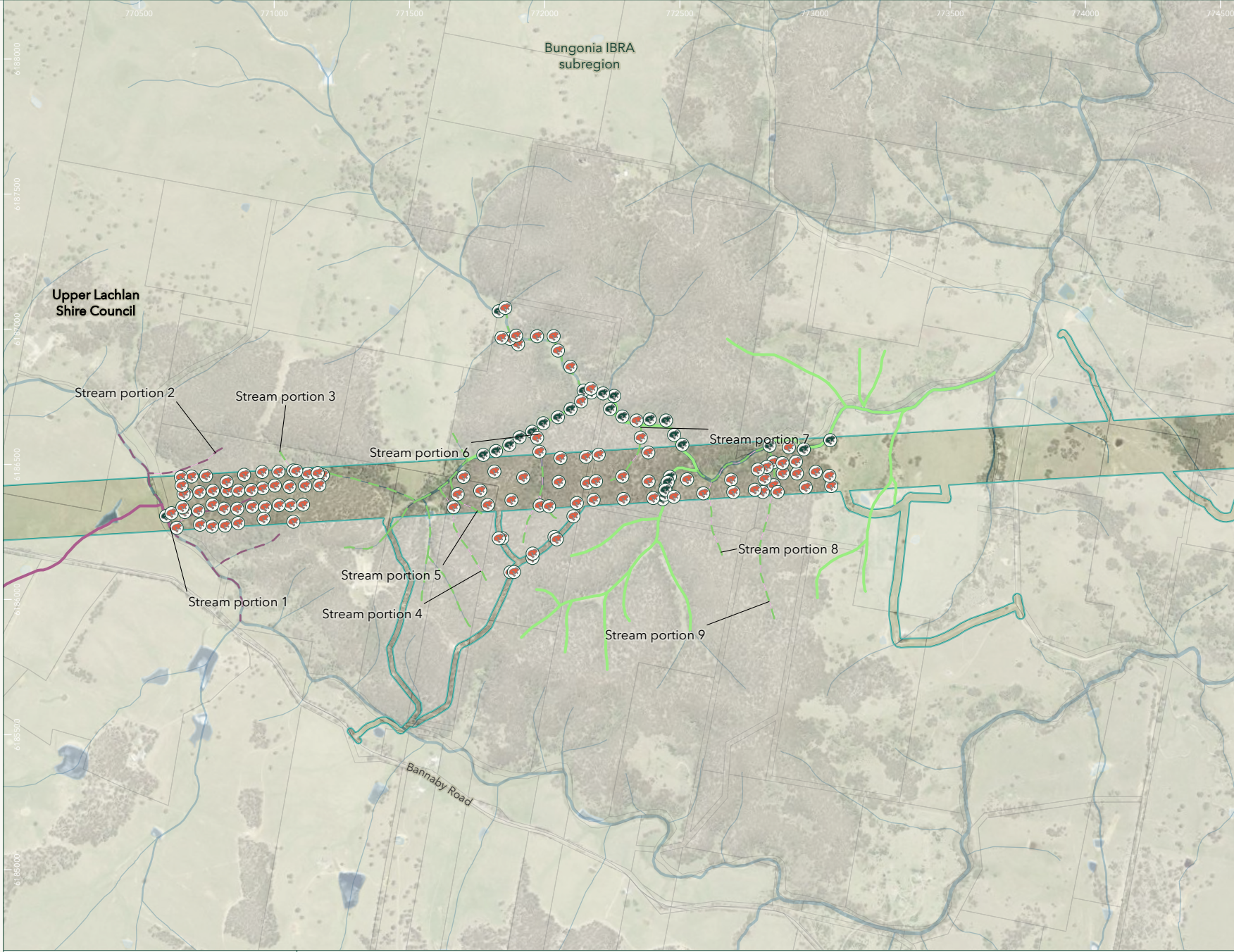


Figure 3c map reference 6

Habitat constraints assessment (streams)

HumeLink Post Consent Surveys - BAVR

File: C:\OneDriveSync\FolderNiche\GIS - APRX - APRX\Aa8700\Aa8758_HumelinkPostConsentSurveys_NSW\Pro\Aa8758_HumelinkPostConsentSurveys_BAVR.aprx Last updated: 15/07/2025 5:04 PM



- Project footprint
- Rapid habitat assessment**
 - Suitable frog habitat (29)
 - Not suitable frog habitat (113)
- Streams**
 - Bannaby Creek
 - Suitable
 - Unsuitable
 - Connors Creek
 - Suitable
 - Unsuitable
- Transport**
 - Minor road
- Hydrography**
 - Strahler stream order
 - 1
 - 2
 - 3
 - 4
 - Waterbody
- Administrative and Property Boundaries**
 - Lot
 - Local Government Area



Figure 3c map reference 7
Habitat constraints assessment (streams)
Humelink Post Consent Surveys - BAVR

Niche PM: Chani Wheeler
Niche Proj. #: 8758
Client: TransGrid

