

Powering Sydney's Future

POTTS HILL TO ALEXANDRIA TRANSMISSION CABLE PROJECT COMMUNITY NOTIFICATION

Cable bridge construction update: Weekend work on Edgeware Road, Newtown and Bedwin Road / Camdenville Park, St Peters

TransGrid is installing a new underground electricity cable from Potts Hill to Alexandria. The Powering Sydney's Future project will help ensure a safe, reliable and affordable electricity supply for Sydney's CBD and surrounding areas. A bridge is required for the new cable to cross the railway and the cycleway will deliver a key active transport link for the Inner West community. You can view a map of the cable route at www.transgrid.com.au/psf.

Work for the new cable bridge and cycleway on Bedwin Road remains on schedule for completion by June 2021. In February and March 2021, you would recall project work to install the precast beams with a series of crane lifts. This letter is to advise of the next crane lift, which will install the third set of precast beams to form the bridge deck.

This work will occur from 6pm Friday 30 April through to 6pm Saturday 1 May.

As part of this work, a mobile crane will be set up at the southern end of Edgeware Road (similar to the last crane lift on Friday 5 and Saturday 6 March). A number of traffic measures will be in place in the local area during the work as shown on the map overleaf.

Work activities

- > Setting up a crane on Edgeware Road.
- > Lifting the precast beams into place over rail corridor with these cranes.
- > Pouring concrete on the bridge deck.
- > Removing the crane from Edgeware Road when the lift is completed.

How will the work affect you?

- > **Edgeware Road** will be closed under Bedwin Road Bridge.
- > Lane closures will be in place on **Bedwin Road Bridge**. Traffic flow will be maintained via contra-flow.
- > **Driveway access for properties between Lord Street and the railway line (350 to 360 Edgeware Road) will be temporarily blocked** during the work. We apologise for any inconvenience this may cause.
- > Street parking will be removed on **Edgeware Road** under Bedwin Road Bridge prior to work starting.
- > Street parking will be removed on **Murray Street** to accommodate diverted buses prior to work starting.
- > Intermittent noise may be heard from the work site, particularly during the crane lift and general use of construction equipment. **Whistling may be used for signalling during the crane work.**
- > Potential light spill, but our crews will seek to limit these impacts as much as possible.
- > Access to **Camdenville Park** will be required during the work (via May Street). Workers will use facilities and access storage containers in Camdenville Park.
- > Traffic control will be in place to safely direct vehicles and pedestrians around the work area.
- > Resident access will be maintained but road users may experience short delays in accessing local properties.



Connect with us

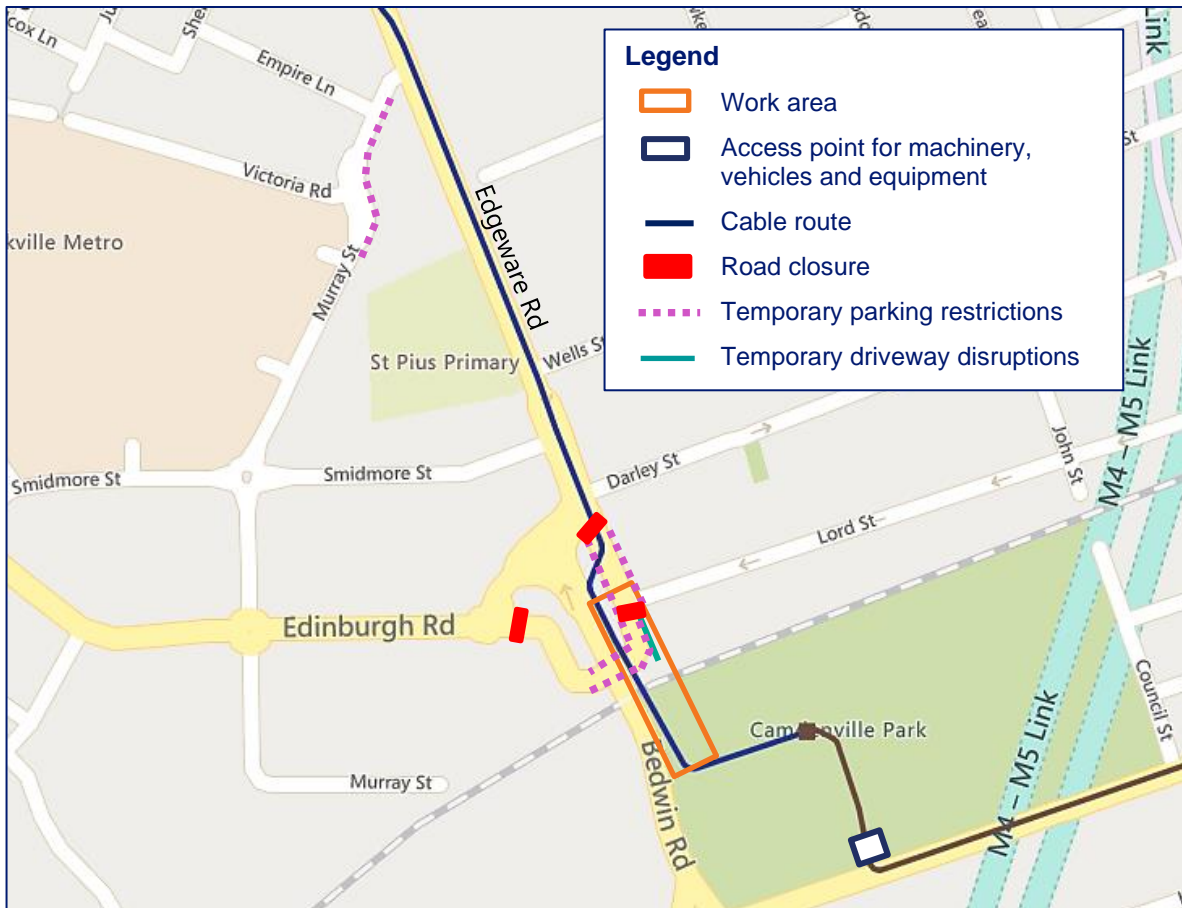
Community Information Line: 1800 955 588

Email: psf@transgrid.com.au

Web: www.transgrid.com.au/psf



Location of work



What's next

Following the crane lifts on Friday 30 April and Saturday 1 May, work to construct the cable bridge and cycleway will continue within standard construction hours. We will keep you advised if further weekend work is required as part of the bridge work.

Extensive trenching and underbore work on Edgware Road, between Llewellyn Street and Lord Street, is scheduled to start in May 2021. We will provide detailed information about this work and associated traffic changes at least seven days prior to work starting.

We have recently completed trenching work in Camdenville Park and will return at a later stage to install two joint bays. Once the joint bays are installed, we will continue with installing and joining cables, and temporarily restoring the work area. We will keep you advised of these activities.

Once all work is complete in the area and the cable is installed and tested, we will permanently restore the road surface.

Contact us

If you have any questions or concerns, please contact the Powering Sydney's Future project team on 1800 955 588, or at psf@transgrid.com.au.



131 450

For an interpreter please call **131 450** and ask them to call TransGrid on **1800 955 588**. The interpreter will then assist you with translation.

**Connect
with us**

Please visit our website: www.transgrid.com.au/psf or contact the Powering Sydney's Future project team:
Community Information Line: **1800 955 588** Email: psf@transgrid.com.au