

## Work Notification | April 2026

Green Hills, Batlow, Kunama, Laurel Hill, Tumbarumba, Buddong and Nurenmerenmong

REF: HLW-120

HumeLink is one of Australia's largest energy infrastructure projects connecting renewable energy sources to the grid and helping to put downward pressure on energy prices. The project consists of 365 kilometres of 500 kV overhead transmission lines connecting Wagga Wagga, Bannaby and Maragle and is being delivered in two sections. The section between Wagga Wagga, Maragle and Wondalga is being constructed by UGL Engineering and CPB Contractors, working in joint venture as HumeLink West.

### What work is happening

Construction of access points and tracks, transmission towers, lines and the Maragle 500kV substation continues through to completion in late 2027. Activities include:

- Excavating and piling for the tower and substation foundations
- Tower base and substation construction, including reinforcement and concrete pours
- Assembling and lifting the towers using cranes
- Stringing conductors across the towers using drones and helicopters
- Vegetation clearing, excavation and earthwork
- Transporting machinery and supplies
- Survey, investigation and monitoring of biodiversity, heritage, noise, dust and vegetation including drone and aerial photography
- Equipment testing and operation.

All work will be carried out in line with the project [Conditions of Approval](#) available on the NSW Government Major Projects website [planningportal.nsw.gov.au/major-projects/projects/humelink](http://planningportal.nsw.gov.au/major-projects/projects/humelink).

### What you can expect

There will be increased number of vehicles and machinery across the project area.

Equipment we use includes generators, elevated work platforms, telehandlers, piling rigs, concreting trucks, cranes, forklifts, water carts, excavators with attachments, compactors, earth moving equipment, drones, helicopters, drone cameras, heavy and light vehicles.

We will make every effort to minimise and manage impacts by:

- Minimising machines and vehicles used, ensuring they are maintained, turning them off when not in use, and fitting devices or shielding to minimise noise
- Monitoring dust, noise and vibration and changing our work if required.

### Traffic control

Traffic control will be in place when required, including temporary traffic lights, variable message signs, boom gates, signage, speed reductions and stop/slow traffic management. Please keep to the signposted speed limits, follow the direction of traffic controllers, and drive to the conditions such as slowing down in wet weather and poor visibility. For the latest traffic updates, visit [livetraffic.com](http://livetraffic.com) or download the app Live Traffic NSW.

## When we are working

Standard working hours are 7am to 6pm, Monday to Friday and 8am to 1pm on Saturdays.

Work out of these hours will take place at locations where impacted properties and landowners have been separately notified.

Environmental surveys including flora and fauna monitoring will be undertaken 24/7 to prepare for work and for monitoring throughout construction.

## Where we are working

Work will be between access points and the transmission line, as shown in the following map. See the interactive map for all work locations at [transgrid.com.au/humelink#Project-map](https://transgrid.com.au/humelink#Project-map).

## Keeping you informed

We'll continue to keep you updated about the project and let you know of any work we're planning which might impact you. If you have any questions about the project or want to provide feedback, please contact our Community and Stakeholder Engagement team on **1800 317 367** or [humelink@transgrid.com.au](mailto:humelink@transgrid.com.au).

You can also visit us at the Snowy Valleys Resilience Hub, 37 Pioneer Street Batlow, open Monday to Friday, from 9am to 5pm.



### Stay up to date with our work

Please head to [transgrid.com.au/HumeLink](https://transgrid.com.au/HumeLink) or scan the QR code to subscribe to regular updates, and for more information on the project.

## Connect with us

Transgrid is committed to working with landowners and communities through the development of HumeLink. Please connect with us for more information.



1800 317 367 (free call)

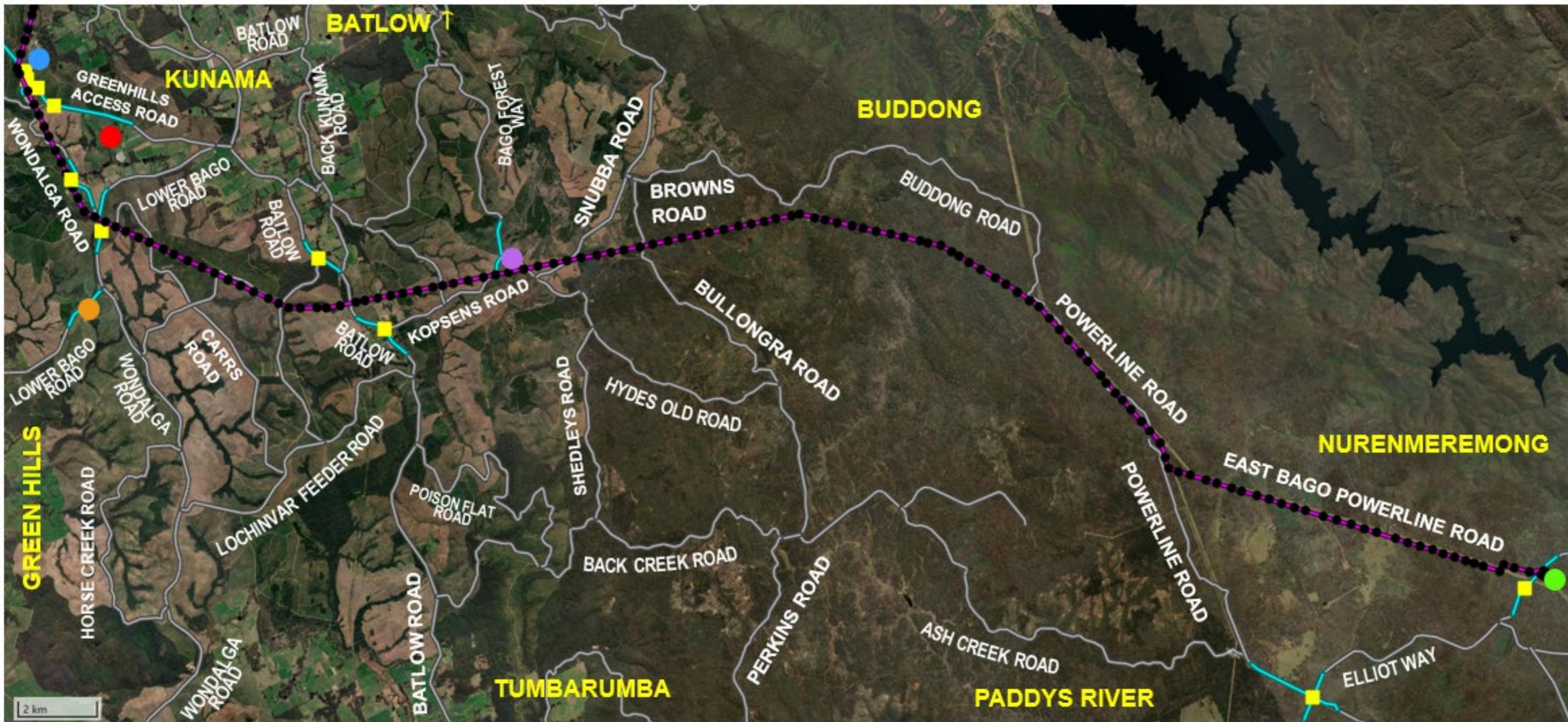
[humelink@transgrid.com.au](mailto:humelink@transgrid.com.au)

[www.transgrid.com.au/humelink](https://www.transgrid.com.au/humelink)



For an interpreter, call **131 450** and ask the service to call Transgrid on **1800 317 367**.

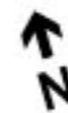
**Privacy statement:** Transgrid recognises the importance of privacy and protecting the personal information it holds, uses and discloses in line with the Privacy Act. It is committed to protecting personal information and handling personal information responsibly and in accordance with its obligations.



**KEY**

- Kunama worker accommodation facility and compound
- Snubba Road compound
- Lower Bago Road compound
- Transmission tower

- HumeLink West transmission line
- Maragle 500kV substation and compound
- Ardrossan Headquarters Road compound
- Access point
- Traffic control



Map is indicative only and not to scale