

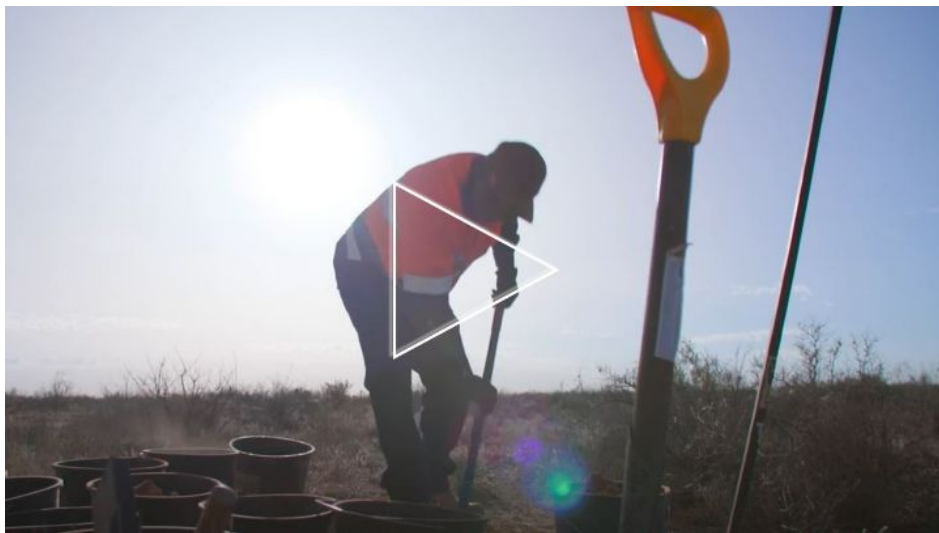
ENERGYCONNECT

Newsletter

April 2022

Welcome to the April EnergyConnect newsletter. In this edition:

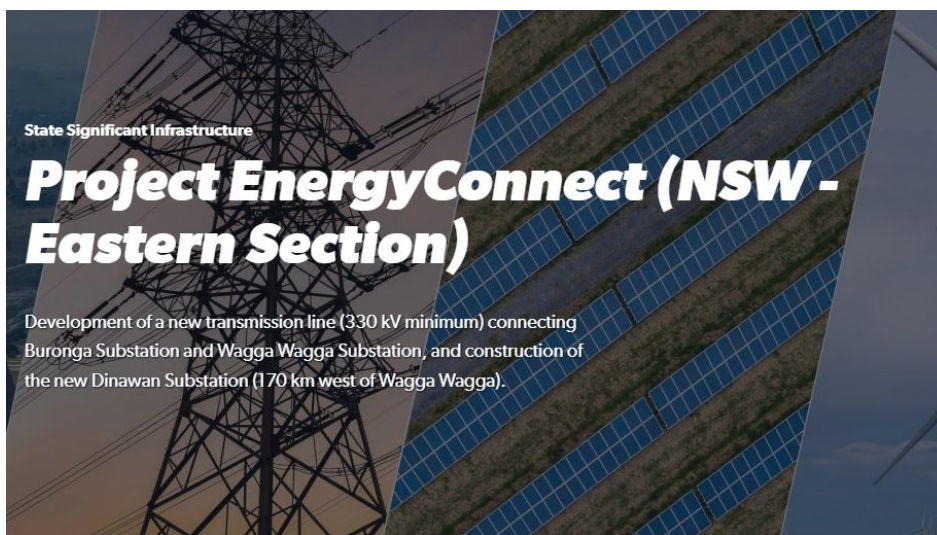
- Cultural heritage works
 - NSW-Eastern Section update
 - Project workforce mobilised
 - Drive to the conditions
 - Hay business breakfast
 - Other progress updates
 - EnergyConnect in pictures
-



Cultural heritage works

Respecting the Indigenous history of the lands in which we operate is important to us. Archaeological test excavations are underway along the EnergyConnect route aimed at preserving Indigenous cultural items and sites.

[Learn more](#)



NSW-Eastern Section update

The submission period for the EnergyConnect NSW-Eastern Section Environmental Impact Statement has closed. Feedback received by the NSW Department of Planning and Environment is being summarised and addressed in a Response to Submissions report, which will be made publicly available on the Department's website.

[Learn more](#)



Project workforce mobilised

EnergyConnect principal contractor SecureEnergy has mobilised workers on the western alignment between Buronga and Wentworth to commence pre-construction activity.

Minor road works, initially at Arumpo Road, Buronga, and then Alcheringa Drive, Gol Gol, will provide all weather access to water fill points. These points will supply potable water to support our construction works and the establishment and operation of camp and laydown areas adjacent to the Buronga substation.

The Buronga camp will be the first camp built to house workers. There will be six accommodation camps at various locations with 1,400 beds, as well as seven laydown and staging areas, and several site offices.

[Learn more](#)



Drive to the conditions

The mobilisation of work crews will lead to changed traffic conditions between Buronga and Wentworth. Once works begin, construction traffic will be operating between 6am until 6pm, Monday to Saturday.

We ask motorists in these areas to stay under the speed limit and drive to the conditions. Traffic control measures will be in place on these roads to provide for your safety.

To further reduce the impact for residents and motorists, SecureEnergy will provide continuous dust suppression during construction activities in accordance with environmental approvals. If you have any concerns about traffic issues, please phone us 1800 49 06 66 or email us at community@secureenergyjv.com.au



Hay business breakfast

Thanks to Hay Shire Council who held a business breakfast event for local businesses to find out more about EnergyConnect. SecureEnergy's Acting Local Participation Manager, Leanne Hawkins was joined by our partner, Industry Capability Network, Regional Manager Murray Riverina, Geoff Reardon to outline the opportunities for local and regional businesses.

[Learn more](#)

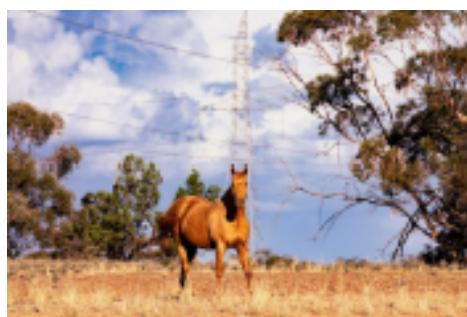


Other progress updates

- **Geotechnical investigation works** between the SA border and Buronga substation are complete. Preliminary geotechnical activities are now being conducted between Buronga and Wagga Wagga around the proposed camps and laydown areas.
- **Ecological surveys** continue to capture data including threatened and hollow bearing trees on the construction corridor between the SA border and the Buronga substation, with an arborist's assessment expected shortly. Pre-clearance land surveys for access points around the Buronga Substation are underway.
- **Road Dilapidation Surveys** of the haul routes to be used during the project have been completed with imagery received for sealed and unsealed roads. These surveys provide a record of pre-construction road conditions using a vehicle-mounted camera

EnergyConnect in pictures

SecureEnergy Health and Safety Officer Ted Adcock has captured some great images along the western alignment of EnergyConnect. We hope you enjoy seeing the project through his lens.



Connect with us

1800 49 06 66 (free call)

pec@transgrid.com.au

transgrid.com.au/energyconnect



People. Power. Possibilities.
