

Work Notification | April 2026

Continuing work at Gregadoo, Book Book, Keajura, Tarcutta, Humula and Oberne Creek

REF: HLW-121

HumeLink is one of Australia's largest energy infrastructure projects connecting renewable energy sources to the grid and helping to put downward pressure on energy prices. The project consists of 365 kilometres of 500 kV overhead transmission lines connecting Wagga Wagga, Bannaby and Maragle and is being delivered in two sections. The section between Wagga Wagga, Maragle and Wondalga is being constructed by UGL Engineering and CPB Contractors, working in joint venture as HumeLink West.

About the work

We are continuing work at Gregadoo, Book Book, Keajura, Tarcutta, Humula and Oberne Creek. This includes building the Gugaa 500 kV substation, upgrading the existing Wagga 330 kV substation, building transmission towers and stringing transmission lines.

We are starting aerial stringing work from Wagga Wagga substation in April and working south-west along the transmission tower alignment using drones and helicopters. To string cables (conductor) between towers insulators, pulley blocks are put in place to enable the conductors to be installed. During the stringing process, the helicopter or drone installs the pilot cable (draw wire) through the pulley blocks from the winch site to the brake site. The draw wire is then used to pull the permanent conductor through the pulley blocks.

Helicopters will usually take-off and land from brake and winch sites (shown on the map overleaf), and occasionally from Wagga substation, Gugaa substation and the Cullinga Park Lane compound at Tarcutta. Drones will take-off and land at any location along the alignment.

More information on aerial stringing is available at [www.https://bit.ly/humelink-stringing-fact](https://bit.ly/humelink-stringing-fact).

Other construction activities will be ongoing until project completion in late 2027 and include:

- Excavating with piling rigs and excavators for the tower foundations
- Concreting and reinforcing foundations
- Assembling and lifting towers into place using cranes
- Vegetation clearing, excavation and earthwork
- Heavy vehicle movements to transport construction machinery and other deliveries
- Survey, investigation and monitoring of biodiversity, heritage, noise, dust and vegetation including drone and aerial photography
- Equipment testing and operation.

All work will be carried out in line with the project [Conditions of Approval](#) available on the NSW Government Major Projects website planningportal.nsw.gov.au/major-projects/projects/humelink.

What you can expect

There will be increased construction vehicles and machinery across the project area during the work. The type of plant and equipment you can expect to see are generators, elevated work platforms, telehandlers, piling rigs, concreting trucks, cranes, forklifts, water carts, excavators with attachments, compactors, earth moving equipment, drones, drone cameras, helicopters, heavy and light vehicles.

We will make every effort to minimise impacts by:

- Performing aerial stringing instead of ground-based stringing with bulldozers as it is quicker, less impact to traffic and less ground disturbance
- Limiting aerial operations to daylight hours
- Turning off machinery and vehicles when not in use

- Monitoring dust, noise and vibration to manage any potential impacts and change our work if required.

Traffic control will be in place when required, including temporary traffic lights, variable message signs, boom gates, signage, speed reductions and stop/slow traffic management. Please keep to the signposted speed limits, follow the direction of traffic controllers, and drive to the conditions such as slowing down in wet weather and poor visibility. For the latest traffic updates, visit livetraffic.com or download the app Live Traffic NSW.

When we are working

Standard working hours are 7am to 6pm, Monday to Friday and 8am to 1pm on Saturdays.

Work out of these hours will take place at locations where impacted properties and landowners have been separately notified. Environmental surveys including flora and fauna monitoring will be undertaken 24/7 to prepare for work and for monitoring throughout construction.

Where we will be working

Work will be carried at compounds, and between access points and the transmission line, shown on the map over the page. See the interactive map for all work locations at transgrid.com.au/humelink#Project-map.

Keeping you informed

We'll continue to keep you updated about the project and let you know of any work we're planning which might impact you. If you have any questions about the project, please contact our Community and Stakeholder Engagement team on **1800 317 367** or humelink@transgrid.com.au.

We welcome your feedback on the HumeLink West JV Community Communications Strategy. Visit www.transgrid.com.au/projects-innovation/humelink/humelink-west/#Strategies--Plans-and-Programs to view the strategy, and connect with us to have your say.



Stay up to date with our work

Please head to transgrid.com.au/HumeLink or scan the QR code to subscribe to regular updates, and for more information on the project.

Connect with us

Transgrid is committed to working with landowners and communities through the development of HumeLink. Please connect with us for more information.

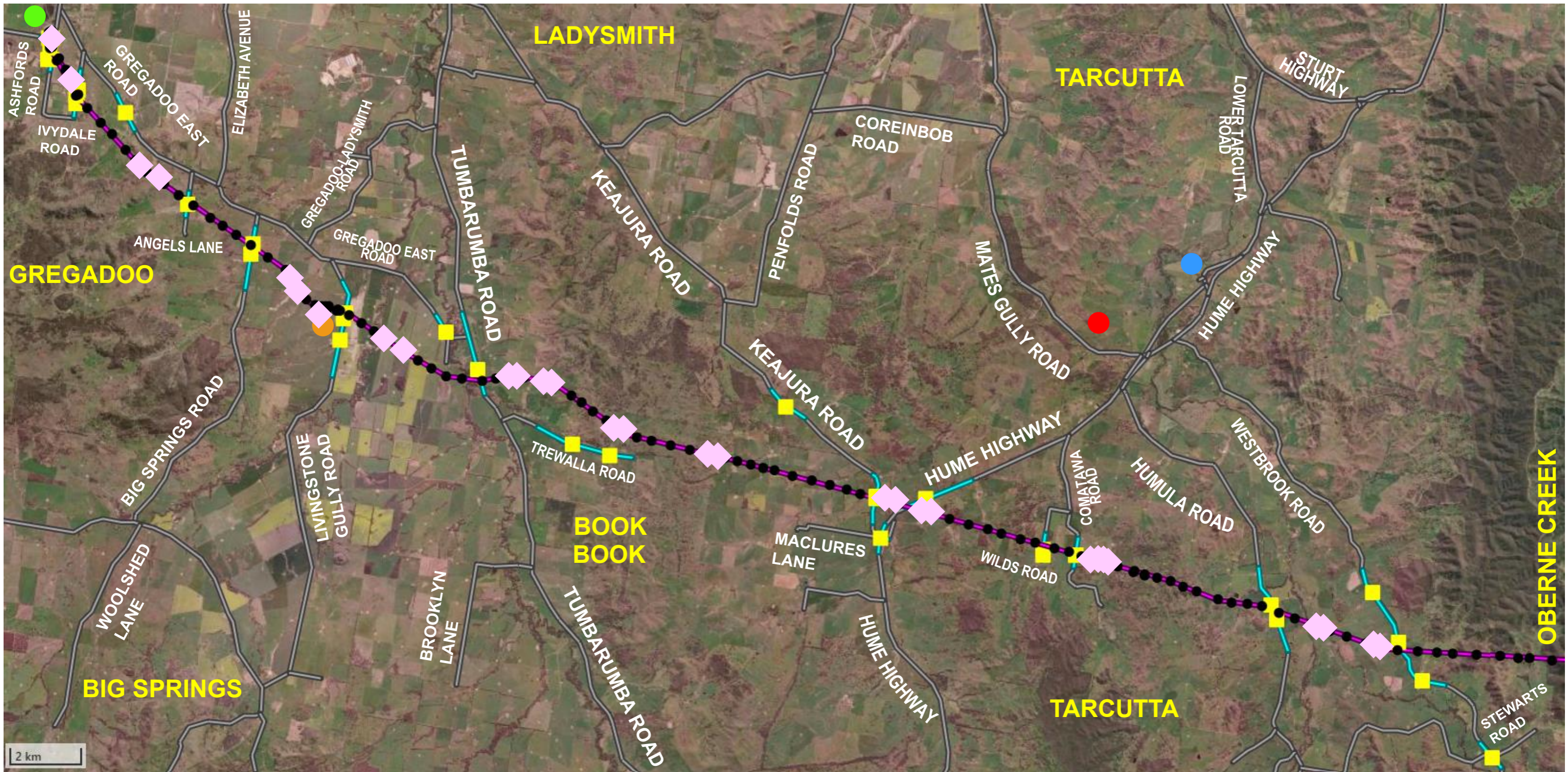


1800 317 367 (free call)
humelink@transgrid.com.au www.transgrid.com.au/humelink



For an interpreter, call **131 450** and ask the service to call Transgrid on **1800 317 367**.

Privacy statement: Transgrid recognises the importance of privacy and protecting the personal information it holds, uses and discloses in line with the Privacy Act. It is committed to protecting personal information and handling personal information responsibly and in accordance with its obligations.



KEY

- Tarcutta worker accommodation facility and compound
- Wagga Wagga 330kV substation and compound
- Gugaa 500kV substation and compound
- Cullinga Park Lane compound

- HumeLink West transmission line
- Transmission tower
- Access point
- Traffic control
- ◆ Brake and winch site



Map is indicative only and not to scale