

# **HumeLink**

## Amendment Report Community Information Webinar

February & March 2024



# Acknowledgment of Country

We begin our commitment to reconciliation by acknowledging the Traditional Owners of the land on which we meet today.

We pay respect to Elders past and present.



# Agenda

Acknowledgment of Country	2 minutes
Introductions	3 minutes
Project update	5 minutes
Submissions Report and Amendment Report	15 minutes
Questions/discussion	30 minutes
Close	5 minutes

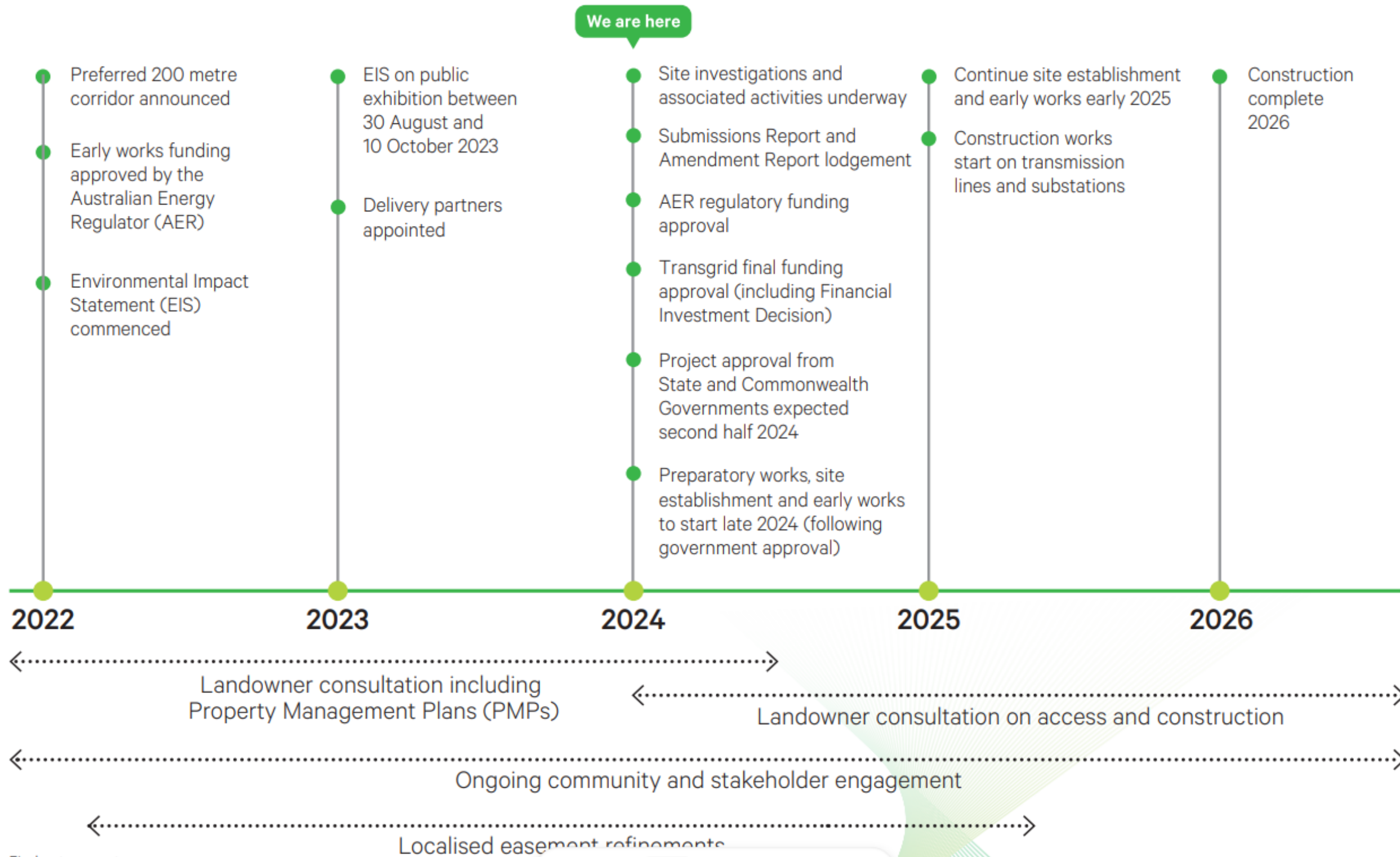


Legend

- HumeLink East
- HumeLink West



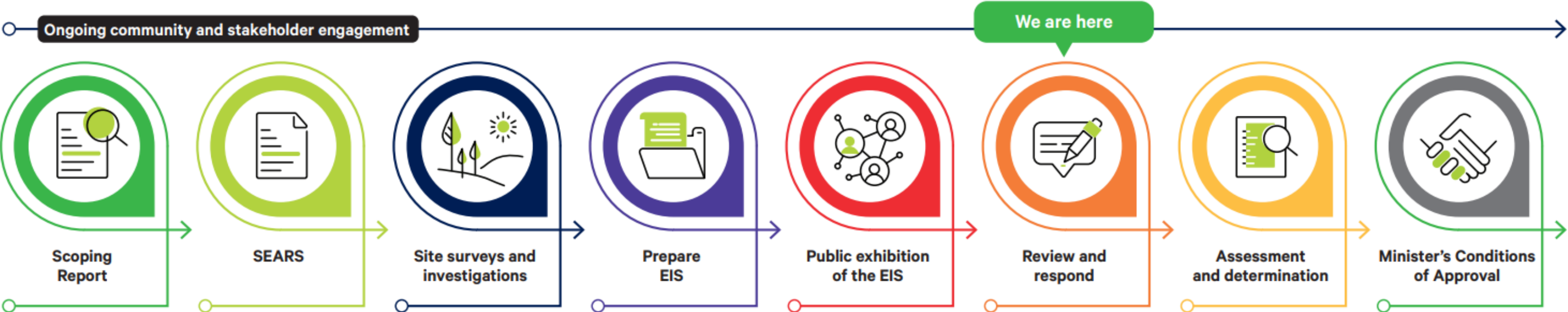
# HumeLink project overview: Key dates



Find out more at:  
[Transgrid.com.au](https://transgrid.com.au)



# Planning Approvals Pathway



# HumeLink community consultation activities overview

EIS Public Exhibition: 30 August 2023 - 10 October 2023



**22**  
Community Information Sessions with **59 attendees**

**22**  
EIS enquiries through the HumeLink Inbox

**5,392**  
Page views on the HumeLink website

**18,27k**  
Views on the Digital EIS

**3**  
Webinars with **14 attendees**

**1,747**  
Active users on the Digital EIS

Most visited topics:

- Biodiversity
- Aboriginal Heritage
- Landscape Character and Visual Amenity

**1,033\***  
Interactions with easement affected landowners  
*\* including phone calls, emails and text messages*

**158**  
EIS submissions, including:

- **133** community submissions (121 individual and 12 organisations)
- **7** council submissions from 5 councils and 1 joint organisation
- **18** submissions from government agencies and public authorities

**UPPER LACHLAN SHIRE**

**4** In-person events

**HILLTOPS**

**GOULBURN MULWAREE**

**COOTAMUNDRA-GUNDAGAI REGIONAL**

**1** In-person event

**YASS VALLEY**

**4** In-person events

**WAGGA WAGGA**

**4** In-person events

**SNOWY VALLEYS**

**9** In-person events

Legend

■ Adjacent Local Government Area

■ Local Government Areas HumeLink traverses

— Preferred route

— Original route assessed in the EIS

## Regulatory requirements

S. 181 - Environmental Planning an Assessment (EP&A) Regulation 2021

**301**  
Landowner notifications letterbox dropped

**17**  
Advertisements, including:

- 13 digital and print
- 3 radio
- 1 social media

## Community consultation materials published

**9**  
Email campaigns to subscribers

**3**  
Newsletters  
*\* Including the July Newsletter - EIS Public Exhibition edition*

**11,237**  
Newsletters letterbox dropped

**20**  
EIS factsheets

**9**  
Local council libraries displayed printed copies of the EIS



# Amendment Report – Amendments and refinements

Green Hills State Forest route and other minor changes to the transmission line corridor

Nomination of access tracks

Updates to construction compounds and changes to worker accommodation facilities

Additional fibre cable connections to existing substations

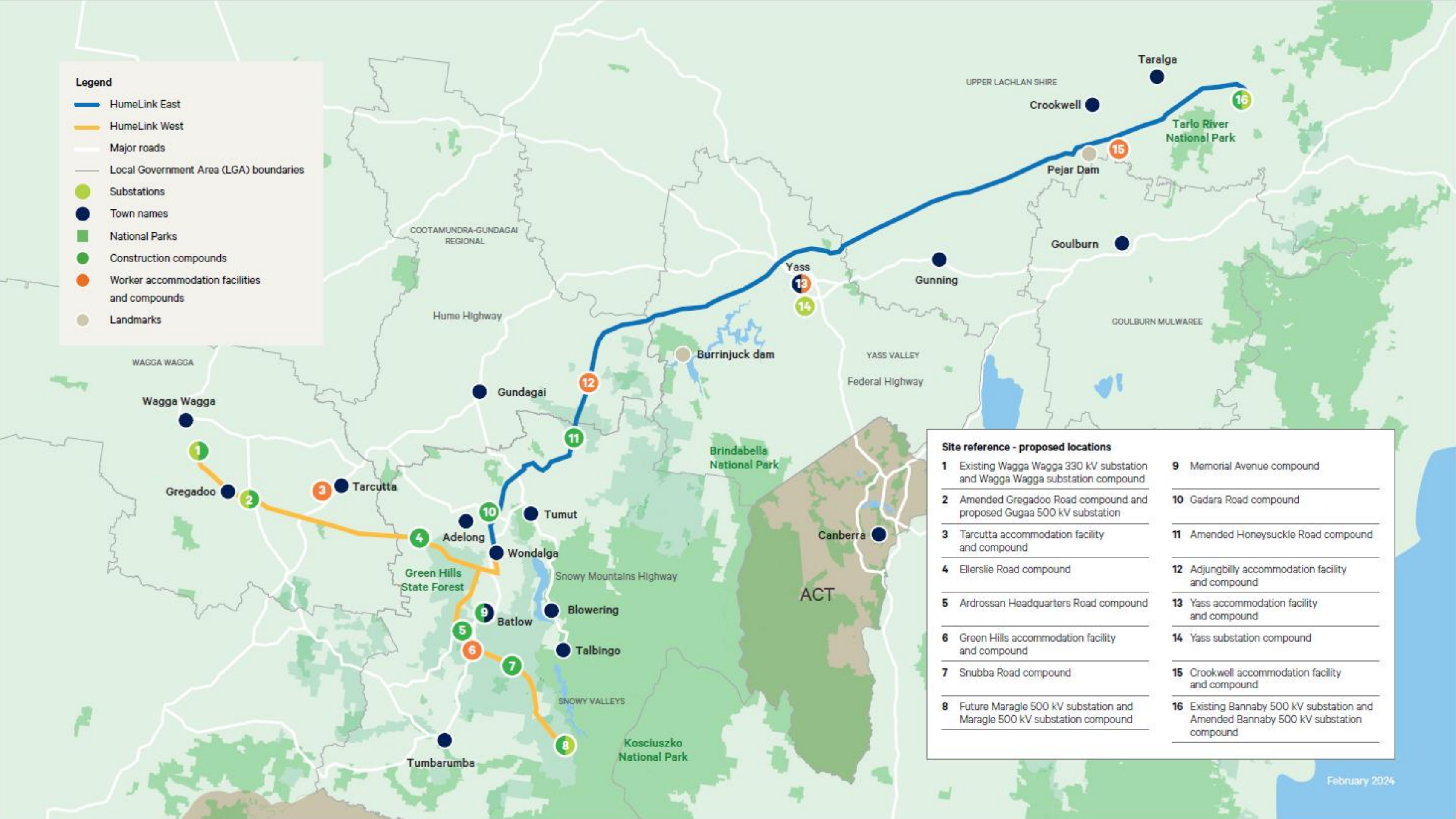
## Refinements:

- Transmission line and substation refinements
- Identification of indicative controlled blasting areas
- Access to water sources
- Use of helicopters and drones



**Legend**

- HumeLink East
- HumeLink West
- Major roads
- Local Government Area (LGA) boundaries
- Substations
- Town names
- National Parks
- Construction compounds
- Worker accommodation facilities and compounds
- Landmarks



Site reference - proposed locations	
1	Existing Wagga Wagga 330 kV substation and Wagga Wagga substation compound
2	Amended Gregadoo Road compound and proposed Gugaa 500 kV substation
3	Tarcutta accommodation facility and compound
4	Ellerslie Road compound
5	Ardrossan Headquarters Road compound
6	Green Hills accommodation facility and compound
7	Snubba Road compound
8	Future Maragle 500 kV substation and Maragle 500 kV substation compound
9	Memorial Avenue compound
10	Gadara Road compound
11	Amended Honeysuckle Road compound
12	Adjungbilly accommodation facility and compound
13	Yass accommodation facility and compound
14	Yass substation compound
15	Crookwell accommodation facility and compound
16	Existing Bannaby 500 kV substation and Amended Bannaby 500 kV substation compound



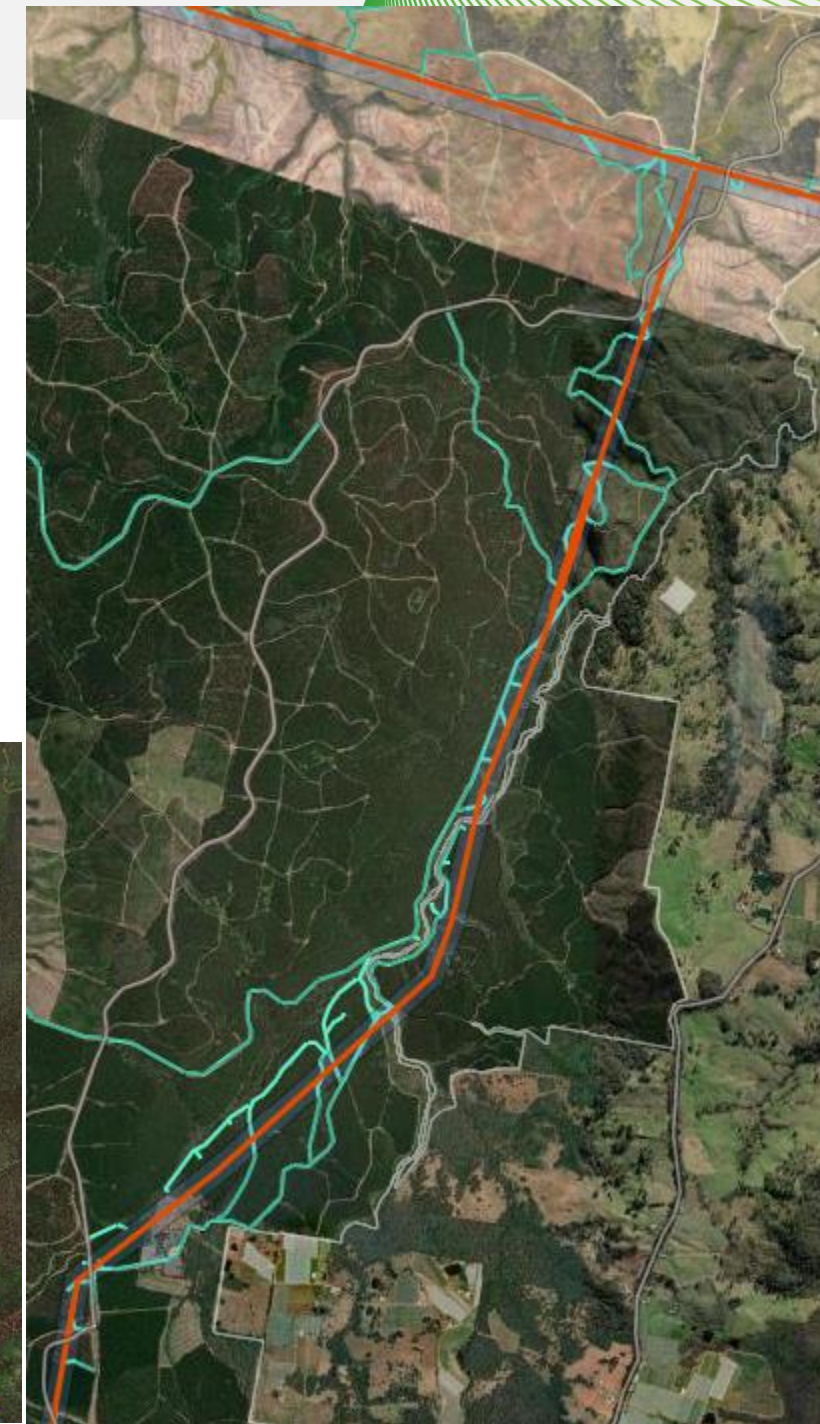
# Nomination of access tracks

Temporary and permanent access tracks will be used in the construction and operation phases. Access tracks will support safe access of construction machinery and vehicles to and from:

- Transmission line structures and easements
- Substations
- Construction ancillary facilities.

Existing tracks will be used or upgraded wherever possible.

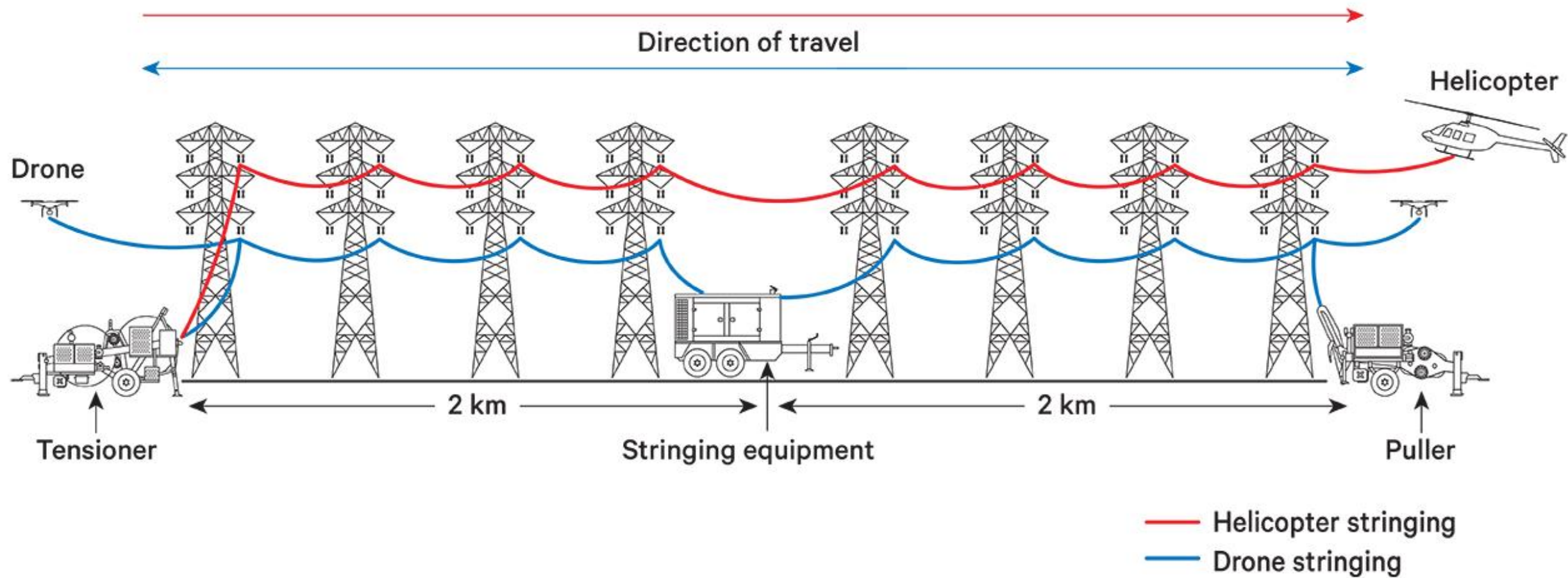
Road improvement works may also be required at access points.



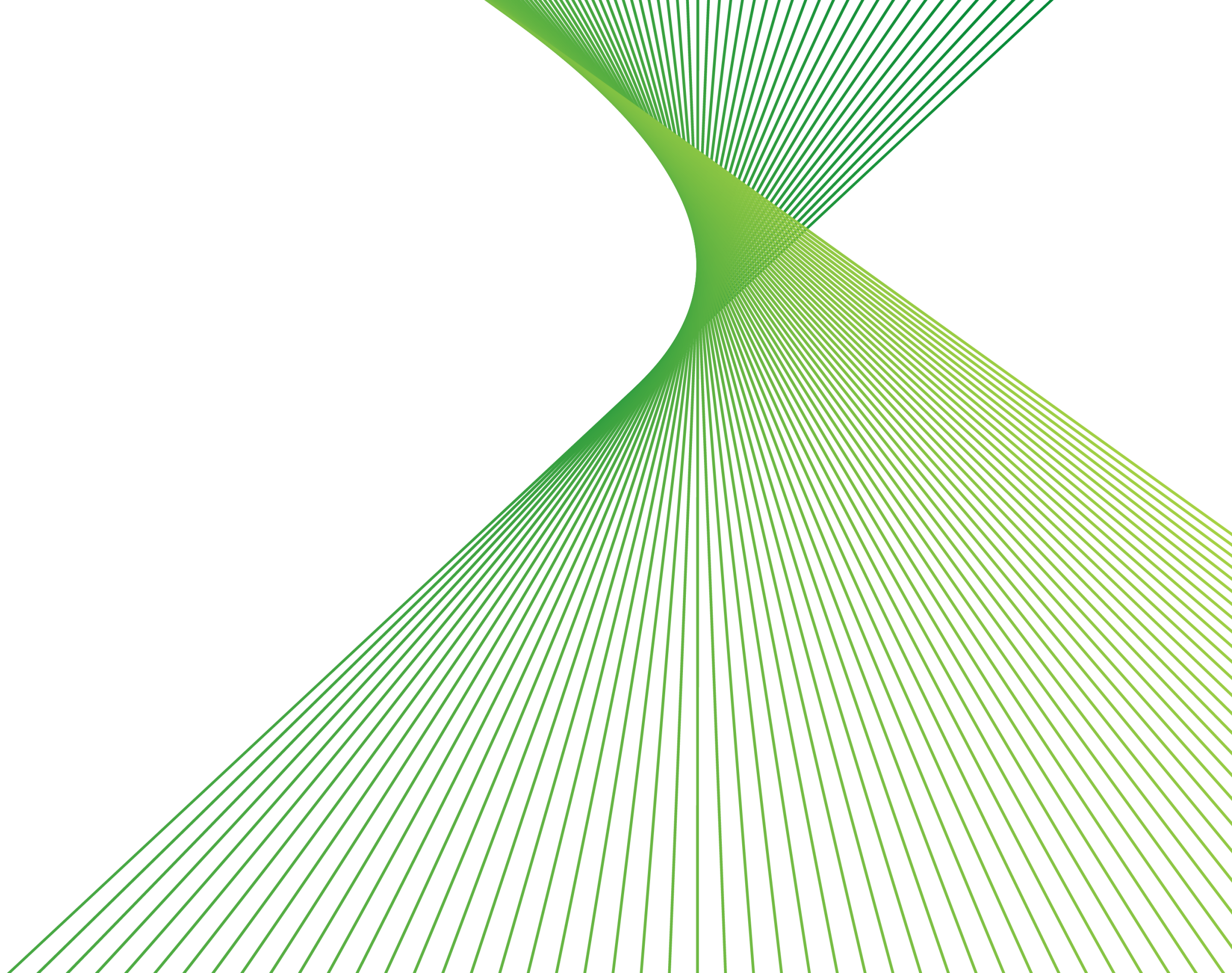


# Helicopter and drone use

## Typical scenario for aerial stringing



# Questions





# Thank you

1800 31 73 67 (free call)  
humelink@transgrid.com.au  
[transgrid.com.au/humelink](https://transgrid.com.au/humelink)

HumeLink Community  
Engagement Team, PO BOX A1000,  
Sydney South, NSW 1235

