

## QUEENSLAND TO NEW SOUTH WALES INTERCONNECTOR UPGRADE

### Delivering safe, reliable, lowest cost electricity to customers

#### Tamworth substation is being upgraded as part of a major project to boost interstate power flows.

Work is underway on a \$230 million project that will increase the transfer capacity between Queensland and NSW to ensure more reliable supply of electricity to customers at all times, including during periods of peak demand.

Easier and more efficient sharing of generation will help reduce energy bills and the project will generate 155 jobs during construction.

This factsheet explains the work taking place at Tamworth substation and what to expect during construction.

#### Scope of work for the QNI Upgrade

TransGrid is upgrading 50 year old transmission lines between our substations at Tamworth and Muswellbrook, and Liddell power station.

We are also upgrading substations at Tamworth, Dumaresq, Armidale and Muswellbrook.

Activities at Tamworth substation include:

- constructing a new static volt amp reactive compensator (SVC) compound. The compound will include the SVC, three transformers and a new services building.
- installing three new capacitor banks with associated switchbays.
- constructing noise walls and security fencing.
- replacing a transmission tower.

All work will take place within TransGrid's existing substation boundary.

#### Managing impacts

There will be some noise during construction and excavation work, which we will make every effort to keep to a minimum.

We will notify nearby residents in advance of any noisy activities such as rock breaking.

To reduce dust, we will cover stockpiles and use water spraying when needed. We expect to re-use most of the spoil on-site.

A Traffic Control Plan will be prepared to manage any temporary impacts on local roads.

#### Key project dates

##### ● May 2020

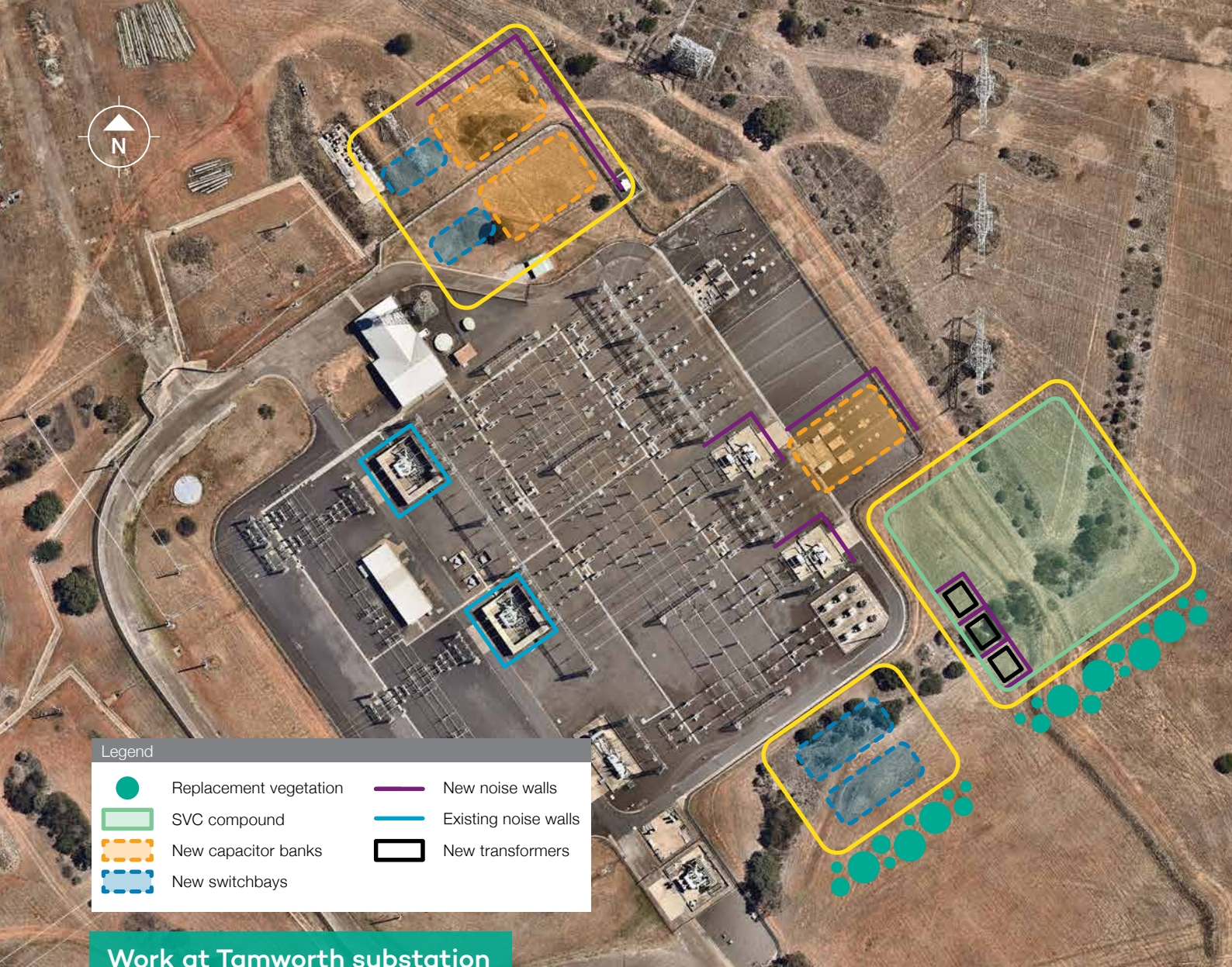
Work commenced on transmission line upgrades

##### ● July 2020



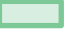




Start of work at Tamworth substation

##### ● November 2021

Completion of work at Tamworth substation / Project commissioning



**Legend**

	Replacement vegetation		New noise walls
	SVC compound		Existing noise walls
	New capacitor banks		New transformers
	New switchbays		

## Work at Tamworth substation

### What to expect

#### Construction

- Some dust and noisy work
- Removal and re-planting of several trees in the work areas
- Increased traffic in and around the substation

#### Equipment

- Cranes
- Drill rigs
- Concrete trucks
- Excavators
- Delivery vehicles

### Work hours

Work hours are 7am to 6pm Monday to Friday, and 8am to 1pm on Saturdays, with some quiet work on Saturday afternoons and Sundays.

On rare occasions there may be some essential activities undertaken at night, such as delivery of oversized equipment.

### When we're finished

Once the work is finished, we will rehabilitate the site and replant trees around the new buildings.

### Contact us

To contact the project team, phone **1800 222 537** or email [community@transgrid.com.au](mailto:community@transgrid.com.au)

